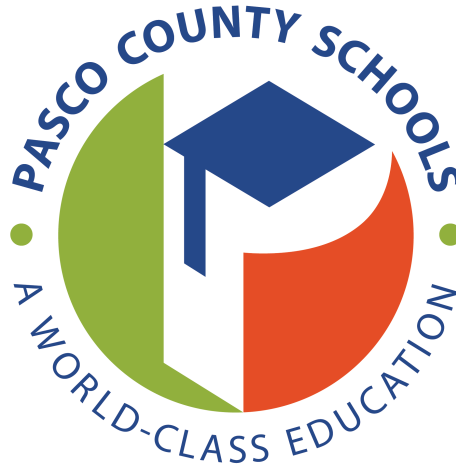


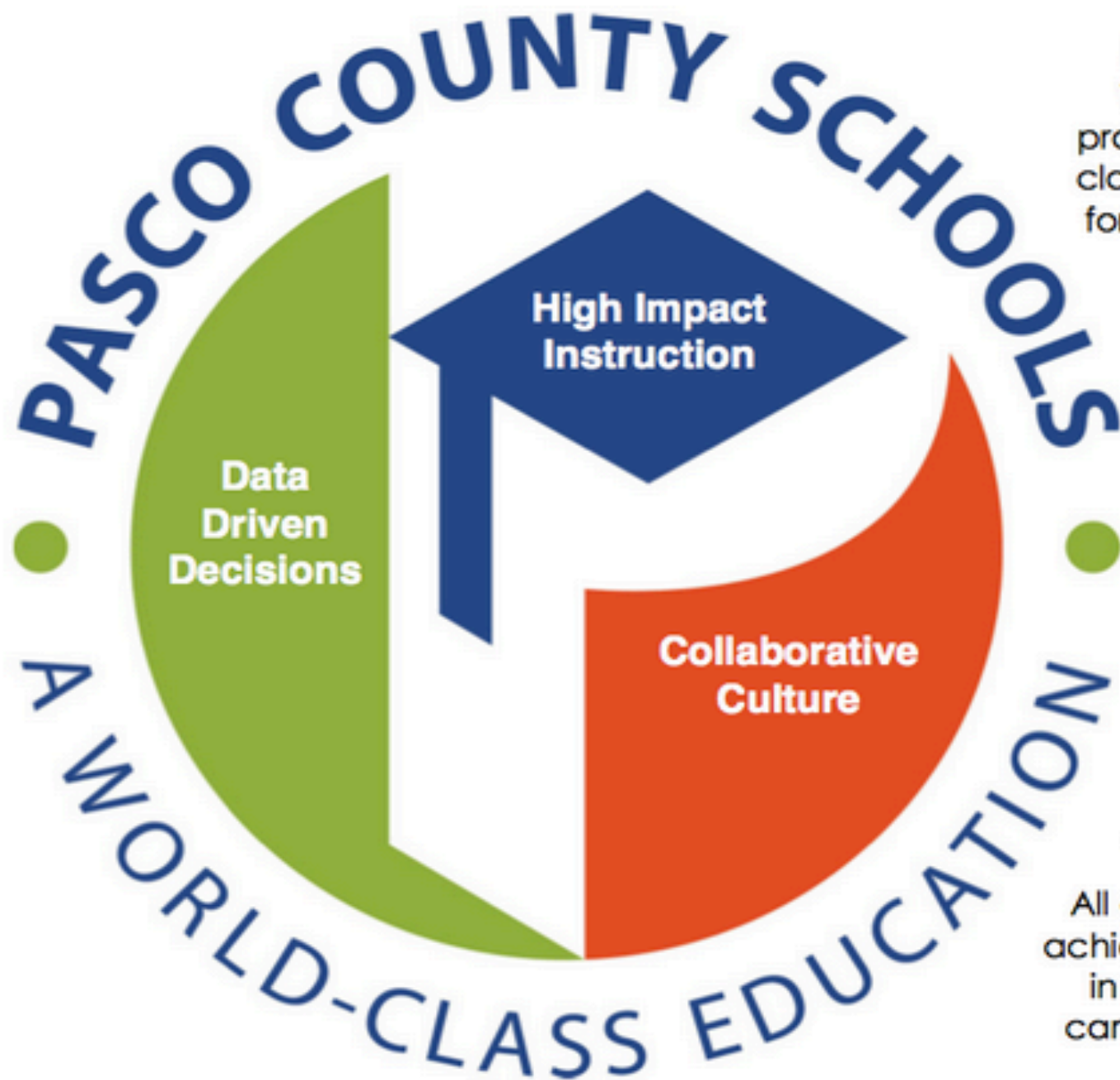
Pasco County Schools:

Enhancing Opportunities through a World Class Education

Planning for the Re-Opening of School

2020-2021





Mission

We exist to provide a world class education for all students.

Vision

All our students achieving success in college, in career, and life.

Common Vision of Instructional Excellence



Guiding Principles for Reopening

- Provide students a meaningful learning experience that assists in closing the achievement gap
- Meet the state requirements for student learning
- Maximize in-person learning while adhering to and respecting health and safety measures
- Provide families, students and teachers with as much predictability and consistency as possible with clear districtwide protocols
- Create flexibility in the system to ensure learning continuity in response to various circumstances

Gathering Input and Voices

Surveys

Looking Back:
National Survey

Looking Ahead:
Pasco Thought
Exchange

Focus Groups

School Leaders

Elementary and
Secondary Teachers

School Related
Personnel

Parents and
Families

Community Connections

PTA

Pasco Department
of Health

Chamber of
Commerce

We listened... and responded.

Focus groups were presented with several for a return to school schedule:

Normal Schedule

Modified Schedule (4 days in school)

Virtual Option

Normal schedule:

Consistency is so important and needed for students, and they will get that with a normal schedule.

Parents that work need that support and consistency in instructional support so they aren't having to take that on as well.

As a teacher trying to struggle family and job was difficult, this would allow me as a teacher to focus on my job fully.

Parents are ready for kids to go back to school.

Modified schedule:

Seems like just another obstacle for parents to figure out.

Full time working parents; impossible to find child care.

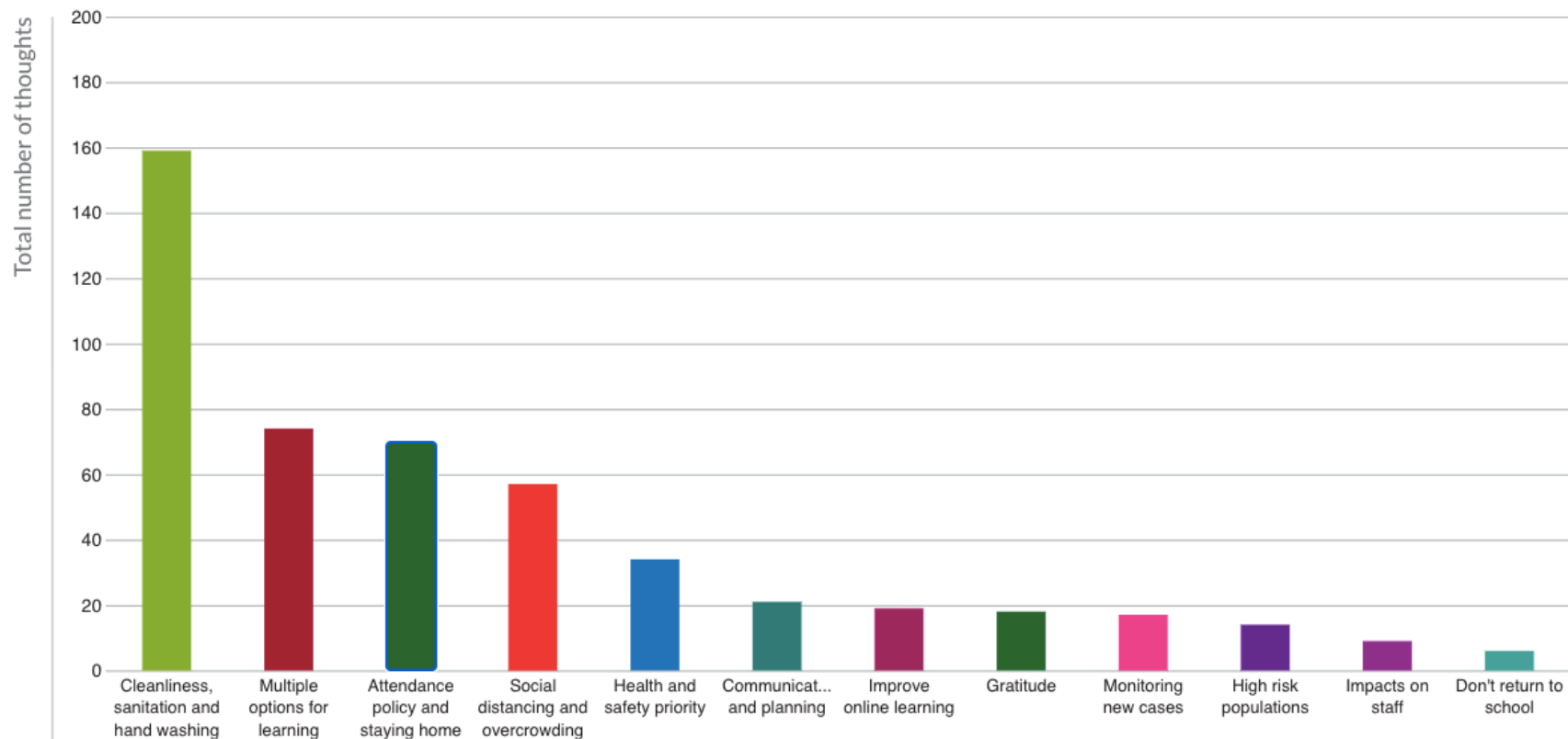
Hard for kids to understand some days on and some days off.

After focus groups,
we moved away from
modified schedule.

Thought Exchange: Parents, Students

THEMES - PARENT & STUDENT SUMMARY REPORT

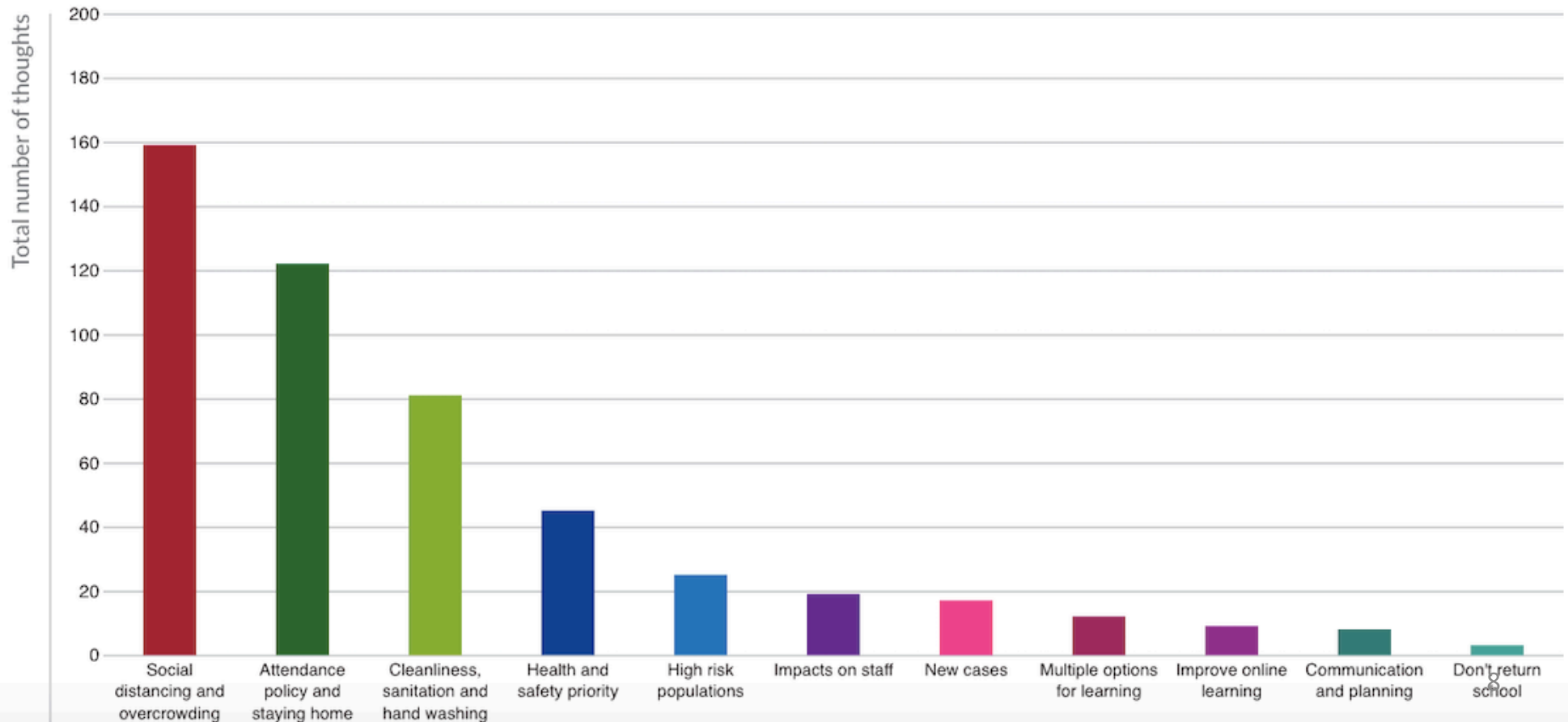
RESULTS Thoughtexchange themes



Thought Exchange: Staff

THEMES - STAFF SUMMARY REPORT

RESULTS Thoughtexchange themes



Work Groups

School Operations

Health and
Wellness

Mental Health

Facilities

Employee
Relations/Benefits

Food and Nutrition

Transportation

Technology

K12 Programming

Professional
Development

Special
Programming

Early Childhood
Programs

Adult Education

Extra-
curricular/Athletics

After School
Enrichment
Programs



Traditional

Return to campus and classrooms with traditional school schedule and in-person instruction. Enhanced health and safety precautions in place. [Learn more...](#)



mySchool Online

Engaging virtual learning, with a connection to enrolled school. Daily virtual interactions and lessons with teachers during the regularly scheduled school day. [Learn more...](#)



Virtual School

Online learning through our nationally-recognized Pasco eSchool, offering flexible scheduling supported by Pasco County teachers, and opportunities for acceleration and enrichment. A semester or year-long enrollment required for the full-time program. [Learn more...](#)

Traditional Model: Guiding Tenets for Decision Making

- Social distancing will be enforced wherever possible.
- The wearing of a masks and/or face shields may be declared mandatory for all staff and students if COVID-19 infections remain high. The District, at this time, will require all students to wear a mask to and from their classroom, at arrival and dismissal, moving about the campus, and on the bus.
 - Secondary students and staff will be strongly encouraged to wear masks at all times, unless social distancing is possible.
- All elementary students in a given class will create a cohort group, and not physically interact with other classes of students in the building, to the extent possible.
- All school buildings will be cleaned thoroughly after school and during the day. Ongoing cleaning protocols will be implemented. Buses will be sanitized every after all morning drop offs and at the end of the day and cleaning protocols will be implemented between runs.
- Sick employees and students will be required to remain at home.
- Large gatherings will be limited to numbers that allow for social distancing.

Traditional Model:

What does the school day look like?

- Facilities

- What you can expect:

- A collective responsibility for everyone to be involved with cleaning and sanitizing.
 - Enhanced daily and weekly cleaning activities, including disinfecting touch points around the campus throughout the day.
 - Increased frequency of changing AC filters.
 - Spray bottles of germicide and microfiber cloths placed in each classroom.

Traditional Model:

What does the school day look like?

- Facilities
 - Hand sanitizing stations in high-traffic locations where hand washing is not available.
 - Students will be encouraged to wash hands and sanitize hands frequently.
 - An isolation room at each school will be established for students and staff exhibiting symptoms.
 - Social distancing will be maintained where possible.
 - One-way traffic flows inside buildings may be created where feasible to improve social distancing of students and staff.

Traditional Model:

What does the school day look like?

- Food Service
 - All schools will have breakfast in the classroom.
 - Menus will be streamlined to promote efficiency in the serving line.
 - More frequent sanitation on high touch points in the serving line including tray slide, milk box, and the keypad.
 - Hand Sanitizer will be available after the point of sale in the dining room and by vending machine locations.
 - Staff will clean and sanitize all serving areas and serving carts daily.
 - Staff will clean and sanitize all tables in the dining areas in between lunches.

Traditional Model:

What does the school day look like?

- Food Service
 - A "menu" of options – not one size fits all!
 - Each school campus is unique and multiple factors such as enrollment, campus layout, and size of cafeteria are considered.

Traditional Model:

What does the school day look like?

- Food Service
 - Elementary
 - Cohorts will go through the lunch line together.
 - Sanitizing will take place in between classes/cohorts.
 - Options include:
 - Outdoor or satellite dining
 - Lunch in the classroom
 - » E.g. - some grades or classes eat in the classroom and other classes/cohorts spread out in the cafeteria.

Traditional Model:

What does the school day look like?

- Food Service
 - Secondary
 - Options include:
 - Use of carts at some locations
 - Satellite dining options – outdoor, commons, e.g.
 - Lunch in the classroom
 - Flexible scheduling
 - Addition of lunch periods

Traditional Model:

What does World Class Learning look like?

- Transportation
 - Students utilizing transportation are expected to wear a face covering while being transported and follow seating directions from school bus staff.
 - Staff will wear masks and face shields will be available upon request.
 - Siblings will sit together.
 - School buses will be sanitized twice daily and have high-touch areas wiped in between groups transported.

Traditional Model:

What does the school day look like?

- Transportation
 - Hand sanitizer stations are being installed on school buses for student use.
 - Employees will encourage use when students enter/exit the bus.
 - Establish "sick" bus procedures including:
 - Bus will be removed from service until completely sanitized.
 - Director or designee approval will be required before it is placed back into service.



Traditional

Return to campus and classrooms with traditional school schedule and in-person instruction. Enhanced health and safety precautions in place. [Learn more...](#)



mySchool Online

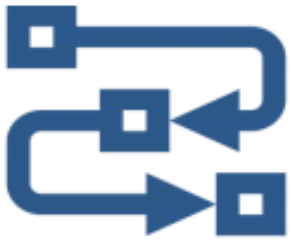
Engaging virtual learning, with a connection to enrolled school. Daily virtual interactions and lessons with teachers during the regularly scheduled school day. [Learn more...](#)



Virtual School

Online learning through our nationally-recognized Pasco eSchool, offering flexible scheduling supported by Pasco County teachers, and opportunities for acceleration and enrichment. A semester or year-long enrollment required for the full-time program. [Learn more...](#)

Social Emotional Learning in Compassionate Schools



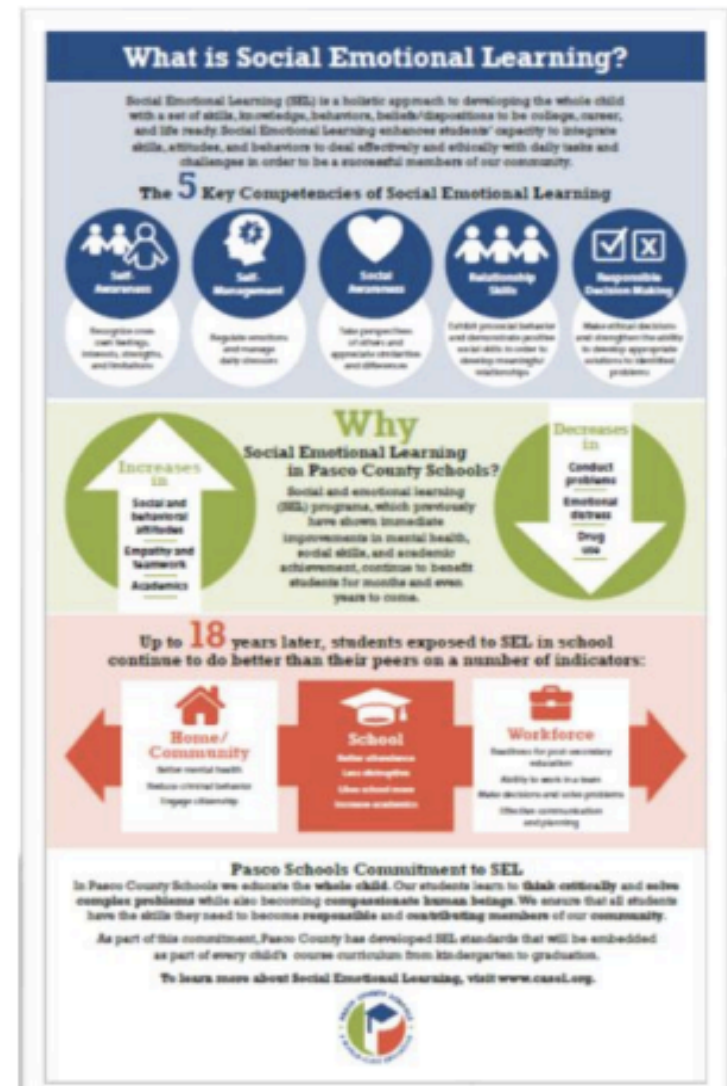
SEL = an ongoing process which includes....



...the **interactions** and **teaching practices** that occur between adults and students which promote...



...Social and Emotional Competencies (SECs)

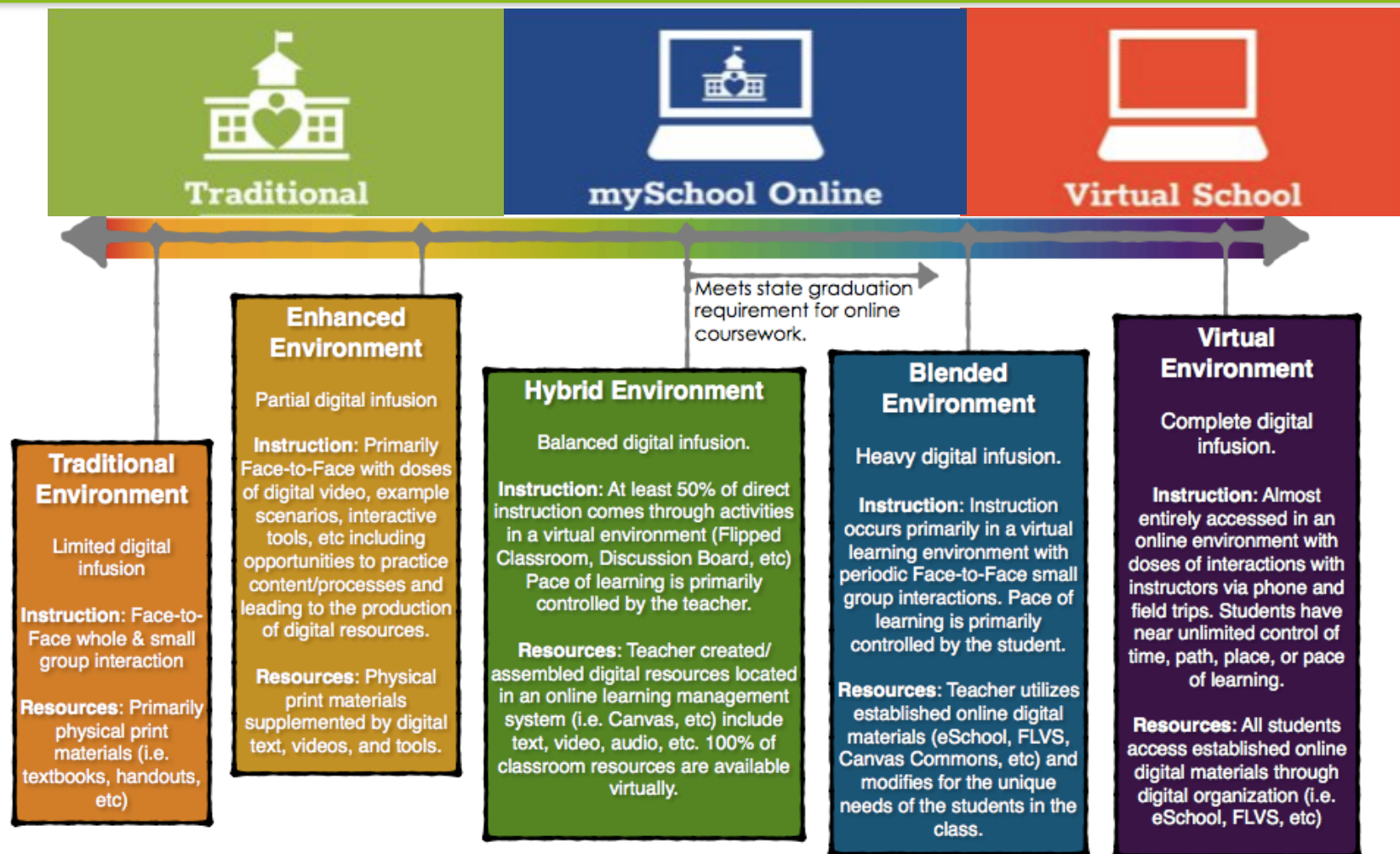


What does World Class Learning look like?

Supports for SEL in our ReOpening Work

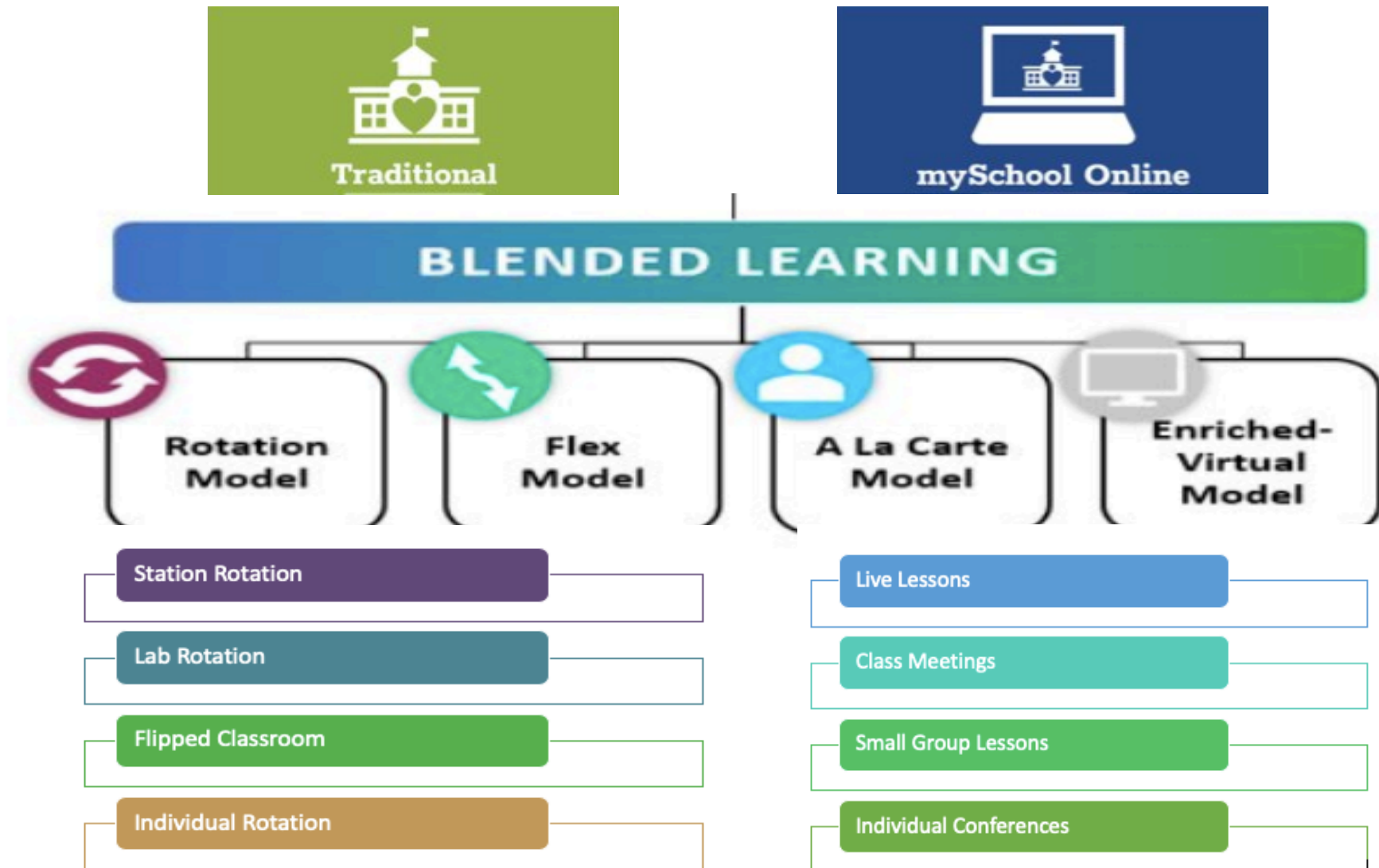
- "20 Day SEL Planner" to start the year
- SEL Network with grade-band benchmarks, videos, instructional supports
- Well-Being/Mental Wellness check-in protocol for admin to support teachers and students
- System-wide Planning Week PD to assist in planning for and prioritizing student and staff Social Emotional Needs

What does World Class Learning look like NOW?



Various programs and classroom models can fit into the categories above. Tight and loose restrictions dictate which category any given classroom might fit into.

What does World Class Learning look like NOW?



What does World Class Learning look like?

Scheduling

Traditional

- Typical bell schedule
 - Elementary= instructional blocks of time throughout the day
 - Secondary= 6 periods scheduled each day



mySchoolOnline

Typical bell schedule

- Elementary
 - Routine class meeting to start the day & end of day before "virtual dismissal"
 - Established instructional blocks with published "live" lessons, small group and individual connections.
- Secondary
 - Daily "live" check-ins according to bell schedule for announcements, attendance, etc.
 - Live lessons, prescheduled small groups or individual conference with students based on needs for remainder of period.

What does World Class Learning look like?

K12 Programming- CORE & Electives

Curriculum	Instruction	Assessment
<ul style="list-style-type: none"> • All Traditional and mySchool Online utilize same core resources • Scope and sequence adjusted to prioritize essential standards • Course content from a variety of vendors <ul style="list-style-type: none"> • Pearson • Great Minds • Florida Virtual School • Discovery Education • eDynamic • Student and teacher materials built in 	<ul style="list-style-type: none"> • Frameworks for content area instruction with specific guidance for teachers for "At School" and At Home" instruction • Emphasis on <ul style="list-style-type: none"> • Grade appropriate assignments • Strong instruction • Meaningful engagement • High expectations • Voice and Choice for teachers in "how" of instruction 	<ul style="list-style-type: none"> • K-8 ELA and Math diagnostic • Progress monitoring Reading K-12 • Curriculum Based Measures (quizzes, unit tests, mid-module, etc.) • Common Formative Assessments (CFA) developed by PLCs as needed to support instruction. • Select District created assessments for HS courses-in progress • State Tests as determined by FLDOE

What does World Class Learning look like?

Athletics & Co-Curricular

Fine Arts Co-Curricular

(Marching Band, Orchestra, Chorus, Dance, Theater)

- Middle/ High School students can select the mySchool Online option for courses at their school of enrollment. These courses will provide online instruction via Canvas.
- School administrators and teachers may create a schedule for courses that require hands-on practice and skills labs so that students can complete these required exercises.



What does World Class Learning look like?

Athletics & Co-Curricular



- Health and Safety guidance provided to admin and athletic directors for sports.
- Coaches required to adhere to all guidance.
- Students in Traditional and mySchool Online can participate on athletic teams.
- Before and after team meetings, coaching staff will clean furniture, door handles, and other facilities, etc. to reduce health risks.
- Hand Sanitizer should be provided at entrances.
- Encourage schools to use approved e-ticket vendors for events.

What does World Class Learning look like?

K12 Programming- CTE and Adult Ed



Traditional

CTE: Middle and High School students can select the CTE options offered at their school of enrollment.

Adult Education: GED, Adult Basic Education (ABE), ESOL, and Career Certificate students will be provided the traditional option. (*Adult- Career Certificate and Underage GED courses will be enhanced with an online instruction component via Canvas in addition to face-to-face instruction including hands-on practice and skills labs.)



mySchool Online

CTE:

- Middle/ High School CTE students can select the mySchool Online option for courses and programs at their school of enrollment. These courses will provide online instruction via Canvas.
- School administrators and teachers will create a schedule for CTE courses that require hands-on practice and skills labs so that students can complete these required exercises.

Adult Education:

- There are no mySchool Online options



Pasco eSchool

CTE:

- Pasco eSchool offers many CTE courses and program options.
- Periodic hands-on and simulations offered on-site or virtually.
- Please check the current Pasco eSchool course offerings list for CTE options that are offered.

Adult Education:

- There are currently no Adult Education options offered at Pasco eSchool.

What does World Class Learning look like?

Special Programming – School



Traditional

All students with disabilities can select the traditional option.



mySchool Online

All students with disabilities can select mySchool Online. Based on initial data, self-contained students that enroll in mySchool Online will not have the same teacher that they would have in the traditional setting. Additionally, these students may be served by a teacher that is providing services to students in a geographic region. Recommendations will be finalized once the survey data is finalized.



Pasco eSchool

Pasco eSchool does not have ACCESS standards and is unable to serve students in these programs.

Students that need for frequent, intense interventions are not able to participate in eSchool.

Based on the volume of student course requests, employee scheduling will be determined.

What does World Class Learning look like?

Special Programming - Accommodations



Traditional

Traditional

Specially designed instruction, related services and accommodations will continue to be provided for students with disabilities.



mySchool Online

mySchoolOnline

All students attending mySchool Online will have access to the many accommodations that naturally occur in the virtual setting.

In addition, mySchool Online will provide any accommodations listed on the IEP that are applicable to the online educational environment.

Please note that some accommodations may not be possible to implement in the online educational setting.

The IEP team, (general education teachers, special education teachers, related services providers, and families), will work collaboratively if it is determined an accommodation is not appropriate or successful.

What does World Class Learning look like?

Special Programming – Related Services



Traditional

The cohort model at elementary schools should not impede necessary IEP services. Every effort should be made to schedule services to occur within the cohort group.

The model at the secondary level should not impede necessary IEP services. Every effort should be made to schedule services to occur within the traditional group.



mySchoolOnline

Students in mySchool Online may come to school campuses to receive their IEP related services (OT/PT/SLP) or may select to participate in the related services virtually. This should be a set schedule so that space is reserved and to minimize as much mixing within a traditional cohort as possible.

What does World Class Learning look like?

Special Programming – Service Providers



Traditional

Community service providers that are allowed by statute need to schedule with schools and be approved before visiting a campus. This should be scheduled in advance with a school-based administrator so that space is reserved and to minimize as much mixing within a traditional cohort as possible. Location on campus will be determined on a case by case basis.



mySchoolOnline

For families who select mySchool Online, community services providers can continue to work collaboratively with school personnel to ensure continuity of care for students.

What does World Class Learning look like?

Special Programming – Medically Vulnerable



Traditional

For medically vulnerable students who come to school, school health staff will develop or review school care plans in consultation with the family and child's doctor, as appropriate. Pasco County schools will consider accommodations on a case-by-case basis.



mySchoolOnline

For families with vulnerable students who do not intend to return to a traditional school setting, staff will work with the family to consider options. These options include but are not limited to mySchool Online, Pasco eSchool and Hospital/Homebound.

What does World Class Learning look like?

Special Programming – Job Training



Traditional

Community Based Instruction (CBI) and Job Training for students with disabilities will be reviewed on a case by case basis. In some circumstances, CBI can be offered on campus rather than going into the community. Additionally, job training sites will be reviewed to ensure all required health and safety guidelines can be implemented. Any activities requiring school bus transportation will follow the strict guidance and procedures developed for the safety of students and staff.



mySchoolOnline

The IEP team, (general education teachers, special education teachers, related services providers, and families), will work collaboratively to review students that enroll in mySchool Online that have CBI and/or job training on their IEP to consider if a plan can be developed with the family to support implementation of services outline.

What does World Class Learning look like?

Special Programming – ESOL



Traditional

Pasco County is committed to continuing to identify and serve English Language Learners.



mySchoolOnline

ESOL strategies will continue to be implemented by instructional and support staff to address the academic and language needs of ELL students.

In addition, ESOL teams will continue to partner with families and schools to provide resources and tools to ensure the academic success of ELL students.

What does World Class Learning look like?

Special Programming – Cyesis Program



Traditional

For students interested in enrolling in the Teen Parent Cyesis Program at Pasco High School and River Ridge High School, students must be enrolled in the traditional brick and mortar setting.



mySchoolOnline

Teen parents may participate in the Teen Parent Voluntary Educational Program and ancillary services through mySchool Online and Pasco eSchool but will not have access to the Cyesis Programs at Pasco High School and River Ridge High School.

What does World Class Learning look like?

Special Programming – School Choice



Pasco eSchool

If parents choose to enroll their student in Pasco eSchool, the student will have to withdraw from the traditional school campus.

If the school the student was enrolled in was a school of choice, the student will have to reapply for school choice during the open enrollment window or through the hardship/request for reassignment application if they decide to return to the brick and mortar setting.

Seats will not be held for any students that leave a school of choice to enroll in Pasco eSchool.



mySchoolOnline

Choosing to utilize mySchool Online will keep your student enrolled in his or her school of choice.

What does World Class Learning look like?

Early Childhood



Traditional

The only option provided for Head Start, Voluntary Prek (VPK), Early Head Start and CYESIS classrooms will be the Traditional model in the classroom.

Children enrolled in the PreK Exceptional Student Education (ESE) programs will be able to participate in the Traditional Model or mySchool Online Model. The only option for a child participating in the VPK program with Prek ESE classroom will be the Traditional Model.

- Early Head Start Home-based will be providing further guidance to families enrolled in this model.
- More guidance will be provided for children being served in the Early Childhood High School Academy.



mySchoolOnline

Children enrolled in the PreK Exceptional Student Education (ESE) programs will be able to participate in the Traditional Model or mySchool Online Model.



Traditional

Return to campus and classrooms with traditional school schedule and in-person instruction. Enhanced health and safety precautions in place. [Learn more...](#)



mySchool Online


Engaging virtual learning, with a connection to enrolled school. Daily virtual interactions and lessons with teachers during the regularly scheduled school day. [Learn more...](#)



Virtual School

Online learning through our nationally-recognized Pasco eSchool, offering flexible scheduling supported by Pasco County teachers, and opportunities for acceleration and enrichment. A semester or year-long enrollment required for the full-time program. [Learn more...](#)

eSchool Model: What does the school day look like? (Elementary: K – 5)



Mrs. Raczkowski

2nd Grade Math

Class Time
Wed & Thurs
9:00-10:00

Class Time Recordings

Emotional Bank Deposit

What's Due

Unlock Request

T2

Skill Builder

Resources For Full Time Elementary

Technical Support

Extra Practice

Thank a Teacher

Media Center

Morning Announcements

Family Resource

As an educator, I strive to create a safe & inclusive environment for all students.
In my classroom, all students are welcome.

eSchool Model:

What does the school day look like?

(Secondary: Grades 6-12)

Mrs. Carter ✨ scarter@pasco.k12.fl.us ✨ (813) 358-7322 ✨ Call or text any time!
Click [HERE](#) to schedule an appointment.

BIOLOGY RESOURCES

CLICK ON TITLES BELOW FOR GUIDED NOTES, ASSIGNMENT TEMPLATES, AND HELP VIDEOS!

[FLVS HELP BIO HELP PAGE](#)
[MRS. CARTER'S BIO HELP PAGE](#)

A+P RESOURCES

CLICK ON TITLES BELOW FOR GUIDED NOTES, ASSIGNMENT TEMPLATES, AND HELP VIDEOS!

[FLVS HELP A+P HELPPAGE](#)
[MRS. CARTER'S A+P HELP PAGE](#)

classroomclipart.com © 2013

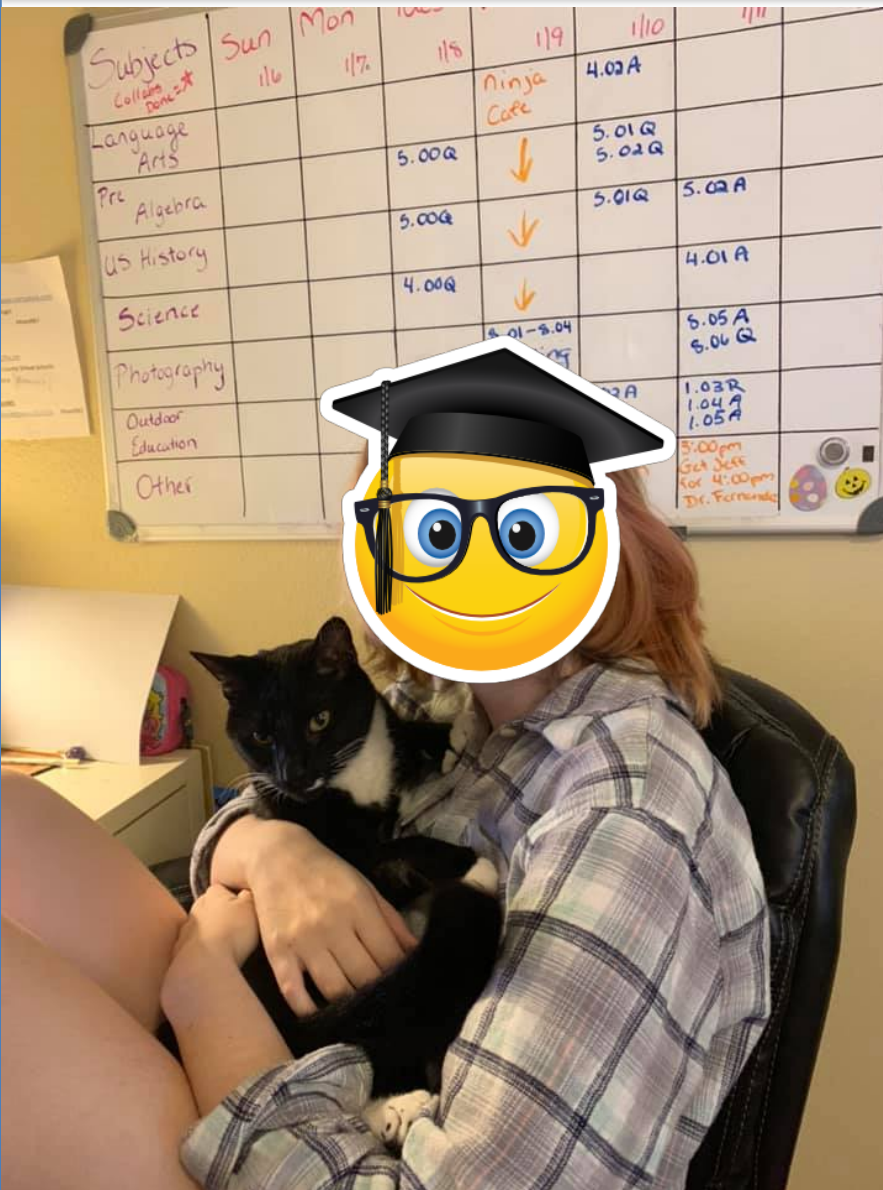
Appointments
Mon-Thurs
10AM - 5PM

**PASCO
eSCHOOL**

*Additional appointment times available by request.
Mon-Thurs
8AM-8PM



eSchool Model: Student Ownership in Scheduling



Given weekly task lists or pace charts, students and families can plan a daily schedule that suits their own preferences and needs.

eSchool Model: Online Collaboration and Instructional Experiences

All Live Lesson Collaborations at Pasco eSchool

Go to our **Live Lesson support page** for directions on how to attend. Scroll this page in the center to see more events or return to the **eSchool home page**. Click on a card to view more information and instructions on the individual Live Lessons.

Off to the RACES! <small>WHO CAN ATTEND</small> All Students <small>LIVE LESSON COURSE</small> English Language Arts <small>START TIME</small> 7/7/2020 10:00am <small>GRADE LEVELS</small> 9-12 <small>DESCRIPTION</small> Learn to craft your written responses in a way that includes all the items teachers are looking for! <small>INDIVIDUAL LIVE LESSON INFO</small> <small>SUPPORT NUMBER</small> (813) 358-7557 <small>HOST NAME</small> Kristen Brady	Summer Math Adventure! <small>WHO CAN ATTEND</small> Math Students Only <small>LIVE LESSON COURSE</small> Math <small>START TIME</small> 7/7/2020 10:00am <small>GRADE LEVELS</small> 9-12 <small>DESCRIPTION</small> Come review some math concepts including slope intercept form, circumference and area of a circle, distance an... <small>INDIVIDUAL LIVE LESSON INFO</small> <small>SUPPORT NUMBER</small> (813) 882-6258 <small>HOST NAME</small> Amy Ramsay-Wood	Putting Your Best Foot Fo... <small>WHO CAN ATTEND</small> All Students <small>LIVE LESSON COURSE</small> Career and Technical Educati... <small>START TIME</small> 7/8/2020 10:00am <small>GRADE LEVELS</small> 6-12 <small>DESCRIPTION</small> Need a professional resume? Join us and create your very own resume that you can use right now! <small>INDIVIDUAL LIVE LESSON INFO</small> <small>SUPPORT NUMBER</small> (727) 755-3145 <small>HOST NAME</small> Liz Virgen	Twice the Fun with String... <small>WHO CAN ATTEND</small> High School Guitar 1 Student... <small>LIVE LESSON COURSE</small> Individual Teacher Course <small>START TIME</small> 7/8/2020 12:30pm <small>GRADE LEVELS</small> 9-12 <small>DESCRIPTION</small> We will review standard notation & tablature and learn about the notes on the 1st and 2nd strings. This lesson will give you a jump ... <small>INDIVIDUAL LIVE LESSON INFO</small> <small>SUPPORT NUMBER</small> (813) 358-7294 <small>HOST NAME</small> Amy Mathews
---	--	--	--



**Student Congress
Friendsgiving
eSports Team**



LEARN

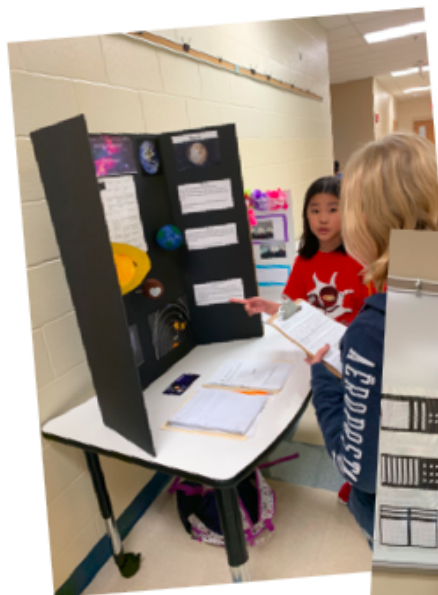
**PASCO
ESCHOOL
ACTIVITIES**



ACTIVITIES

Field Trips
Meet-ups
Sharing Learning





STEM Fair
Investigations
Discovery



LIVE LESSONS



Working with Learning Guides



LIVE LESSONS



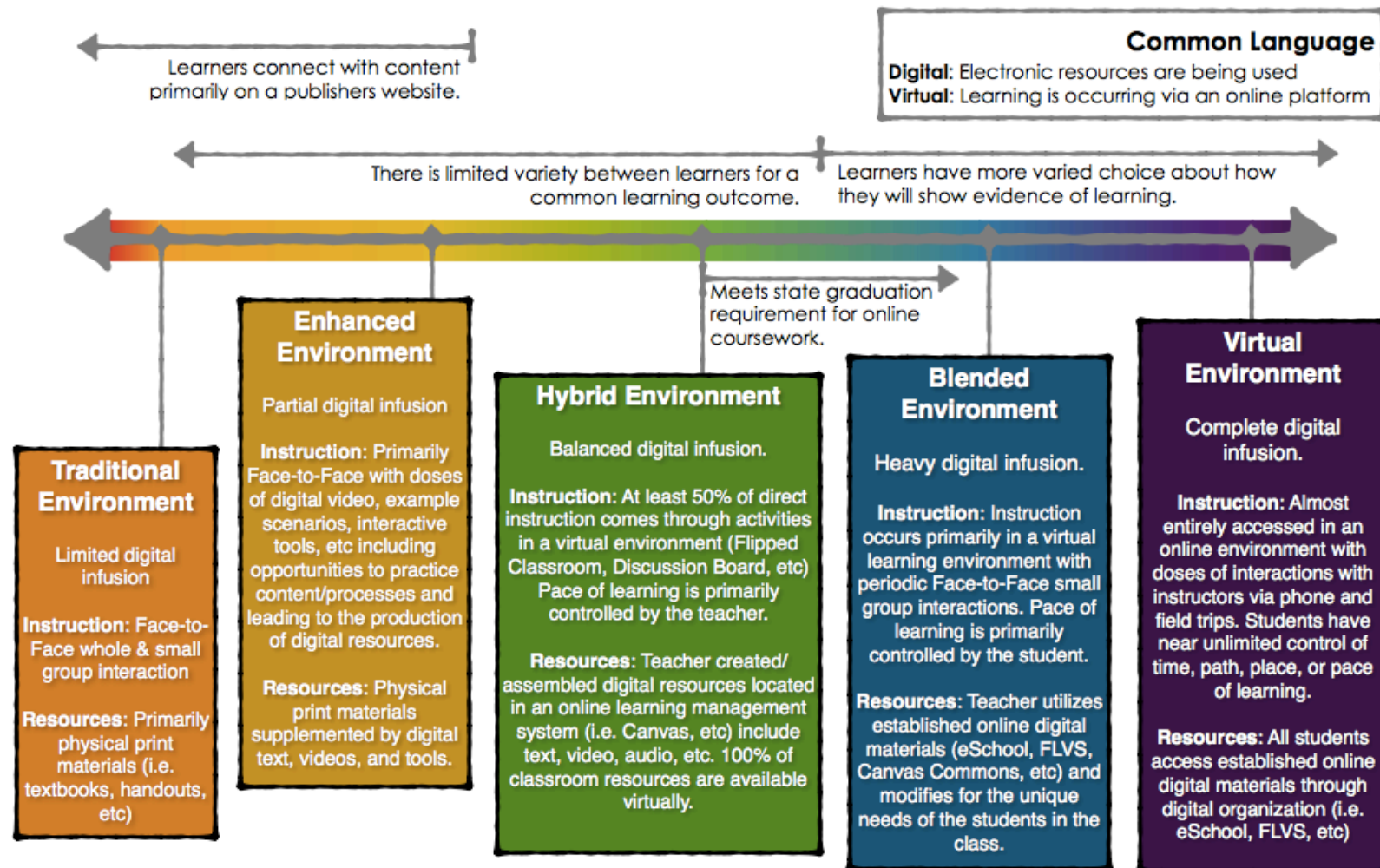
eSchool Model:

What does World Class Learning look like?

- Primarily digital content.
- Doses of interactions with instructors via phone, text, feedback/email, webinar, and field trips.
- Students have nearly unlimited control of time, path, place, or pace of learning.
- Digital materials organized on a learning management system and supported with other digital tools and platforms.
- Options to include on campus and online courses within the school day for a personalized schedule.

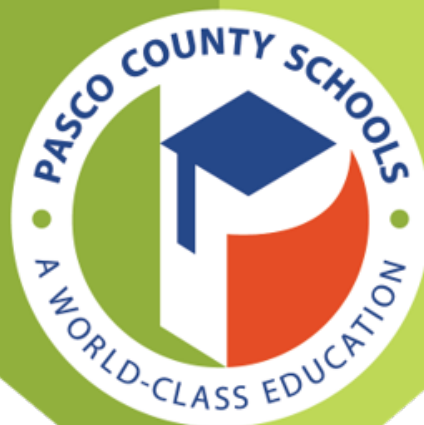
A Look Across All Models

A CONTINUUM OF DIGITAL INFUSION IN LEARNING ENVIRONMENTS



Various programs and classroom models can fit into the categories above. Tight and loose restrictions dictate which category any given classroom might fit into.

EVERY OPPORTUNITY



Next Steps

Questions?