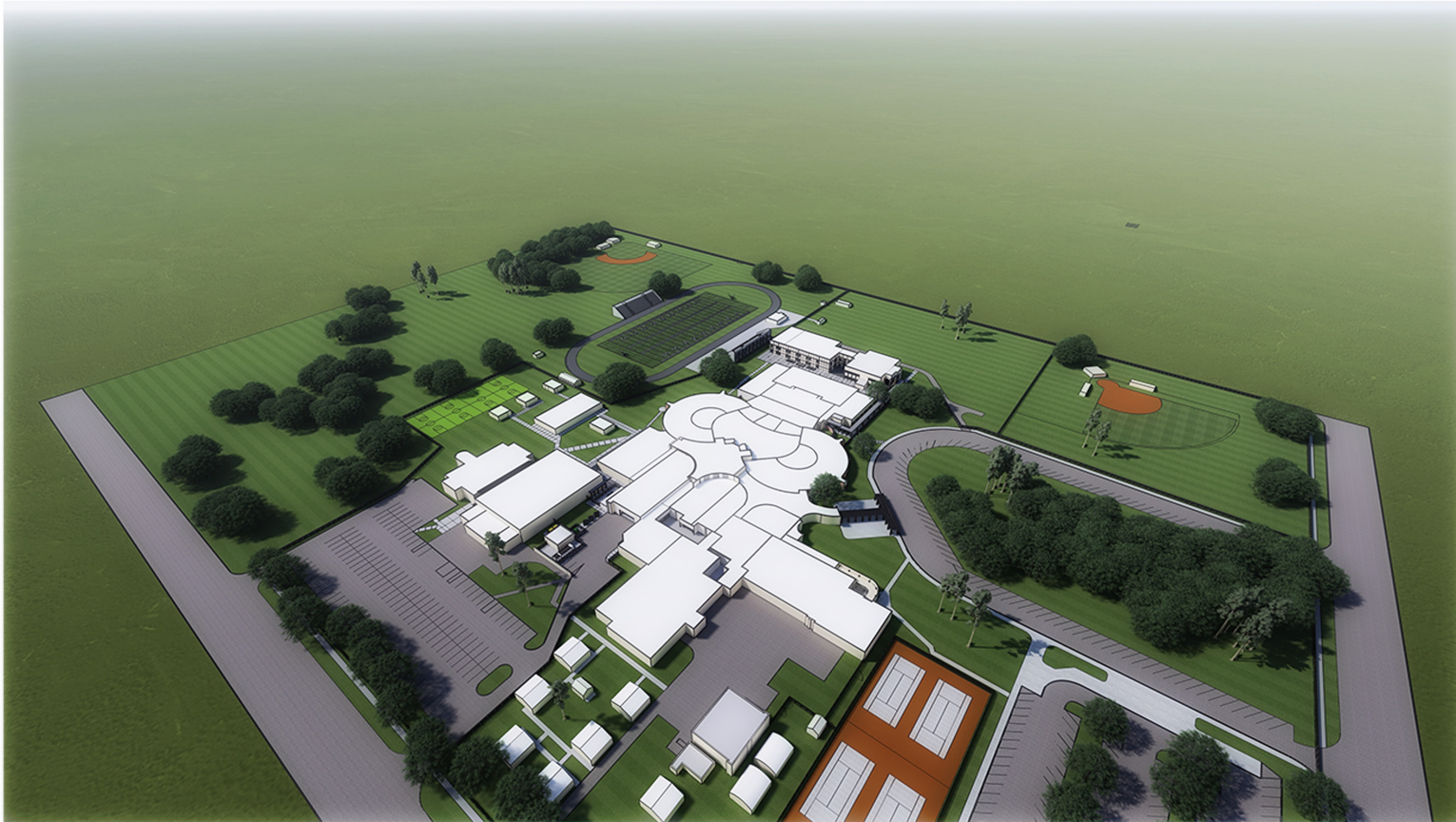


ZEPHYRHILLS HIGH SCHOOL RENOVATION AND ADDITIONS



HEPNERARCHITECTS
Hepner Architects, Incorporated
AA 0002017 | IB 20001337



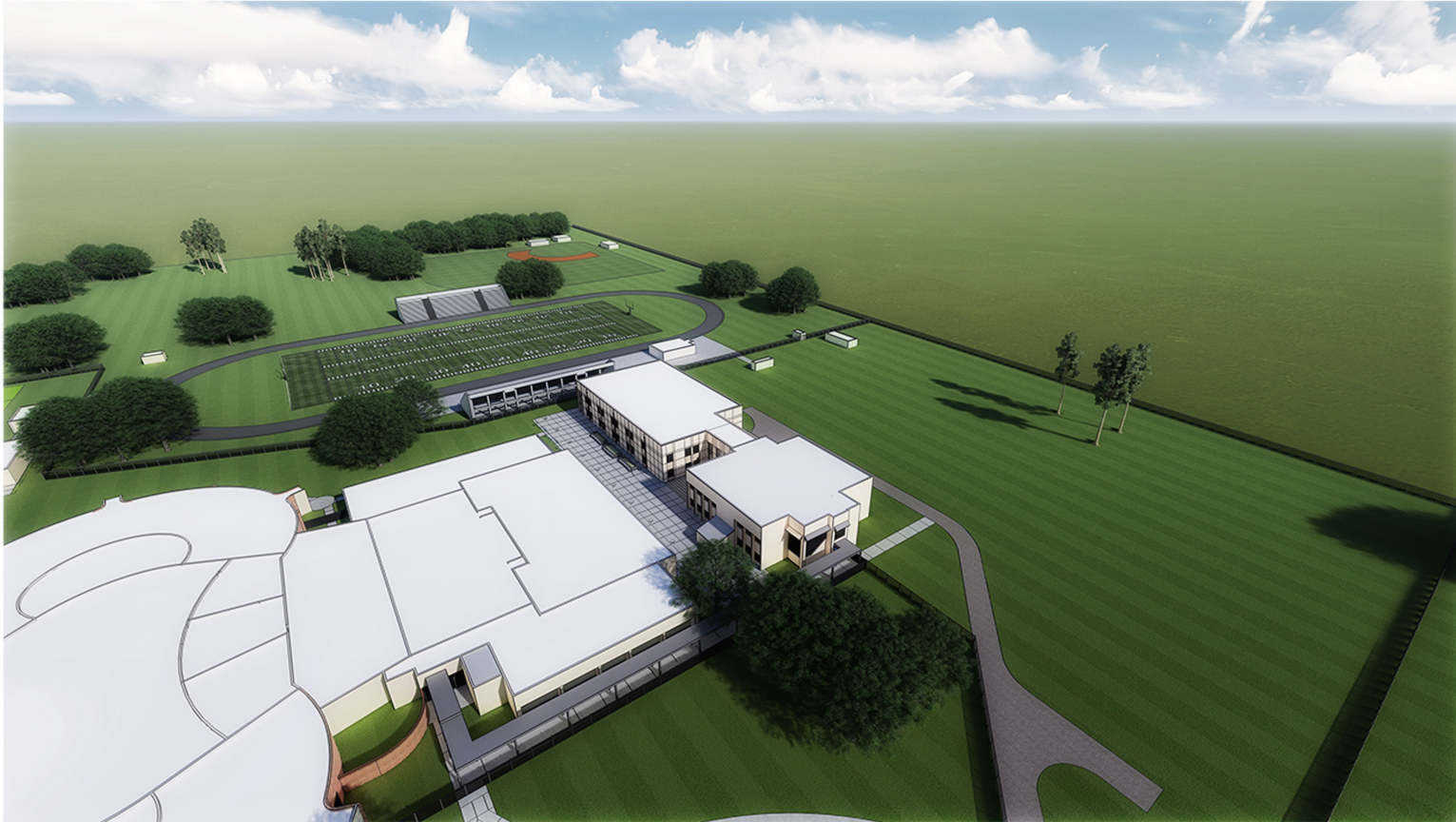
AERIAL VIEW



ZEPHYRHILLS HIGH SCHOOL ADDITION AND RENOVATIONS



HEPNERARCHITECTS
 Hepner Architects, Incorporated
AA 0002817 | IB 20001337



AERIAL VIEW



ZEPHYRHILLS HIGH SCHOOL ADDITION AND RENOVATIONS



HEPNERARCHITECTS
 Hepner Architects, Incorporated
AA 0002817 | IB 20001337



AERIAL VIEW (CLASSROOM ADDITION)



ZEPHYRHILLS HIGH SCHOOL ADDITION AND RENOVATIONS



HEPNERARCHITECTS
 Hepner Architects, Incorporated
AA 0002817 | IB 20001337



AERIAL VIEW



ZEPHYRHILLS HIGH SCHOOL ADDITION AND RENOVATIONS



HEPNERARCHITECTS
 Hepner Architects, Incorporated
 AA 0002817 | IB 20001337



EXTERIOR RENDERING (FRONT ENTRANCE CANOPY)

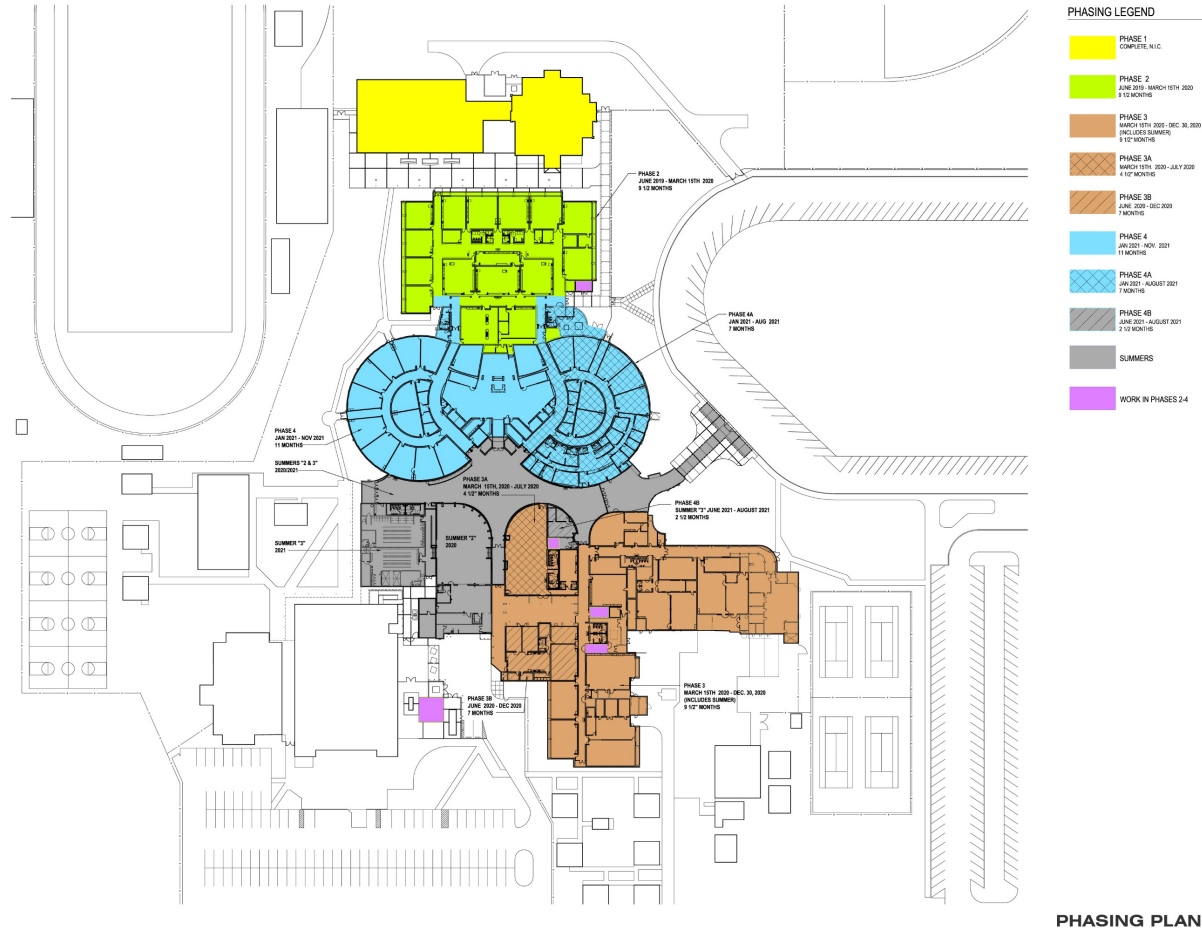


ZEPHYRHILLS HIGH SCHOOL ADDITION AND RENOVATIONS



HEPNERARCHITECTS
Hepner Architects, Incorporated
AA 0002817 | ID 20001337

- Ensure The Safety of The Students and The Staff
- Maintain An Environment That Promotes Learning
- Deliver A Safe, High Quality Project



ZEPHYRHILLS HIGH SCHOOL ADDITION AND RENOVATIONS



HEPNERARCHITECTS
Hepner Architects, Incorporated
AA 0002017 | ID 20001337

- **Be Courteous When Performing Noisy Activities**
- **Construct Visual Barriers**
- **Control Dust With Filtration Machines**
- **Sequence The Work To Minimize Impact On Student's**



ZEPHYRHILLS HIGH SCHOOL ADDITION AND RENOVATIONS



HEPNERARCHITECTS
Hepner Architects, Incorporated
AA 0002817 | ID 20001337

- Construct Secure Storage And Work Areas
- Control Worker Access



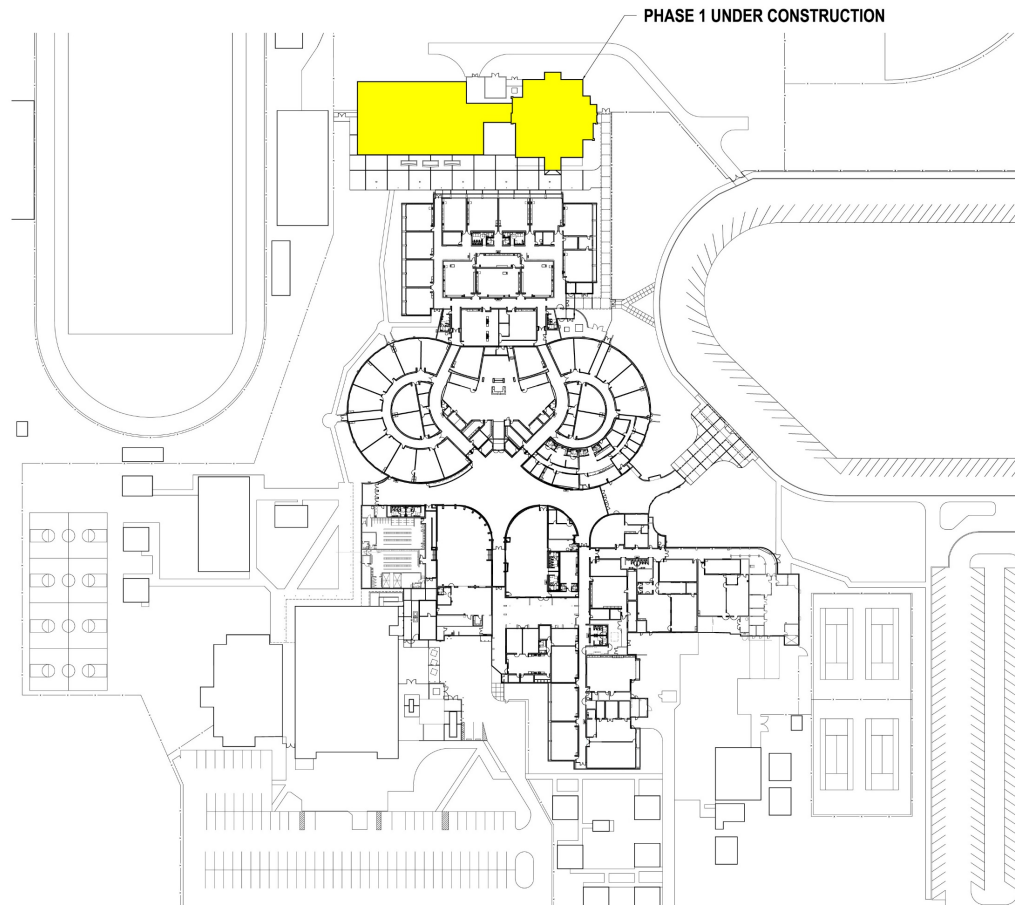
- Restrict Workforce To 100% Jessica Lunsford Act
- Verify Daily



ZEPHYRHILLS HIGH SCHOOL ADDITION AND RENOVATIONS



HEPNERARCHITECTS
Hepner Architects, Incorporated
AA 0002817 | ID 20001337



PHASING LEGEND

- PHASE 1
COMPLETE, N.I.C.
- PHASE 2
JUNE 2019 - MARCH 15TH 2020
9 1/2 MONTHS
- PHASE 3
MARCH 15TH 2021 - DEC. 30, 2026
(EXCLUDES SUMMERS)
5 1/2 MONTHS
- PHASE 3A
MARCH 15TH, 2020 - JULY 2020
4 1/2 MONTHS
- PHASE 3B
JUNE 2020 - DEC 2020
7 MONTHS
- PHASE 4
JAN 2021 - NOV. 2021
11 MONTHS
- PHASE 4A
JAN 2021 - AUGUST 2021
7 MONTHS
- PHASE 4B
JUNE 2021 - AUGUST 2021
2 1/2 MONTHS
- SUMMERS
- WORK IN PHASES 2-4

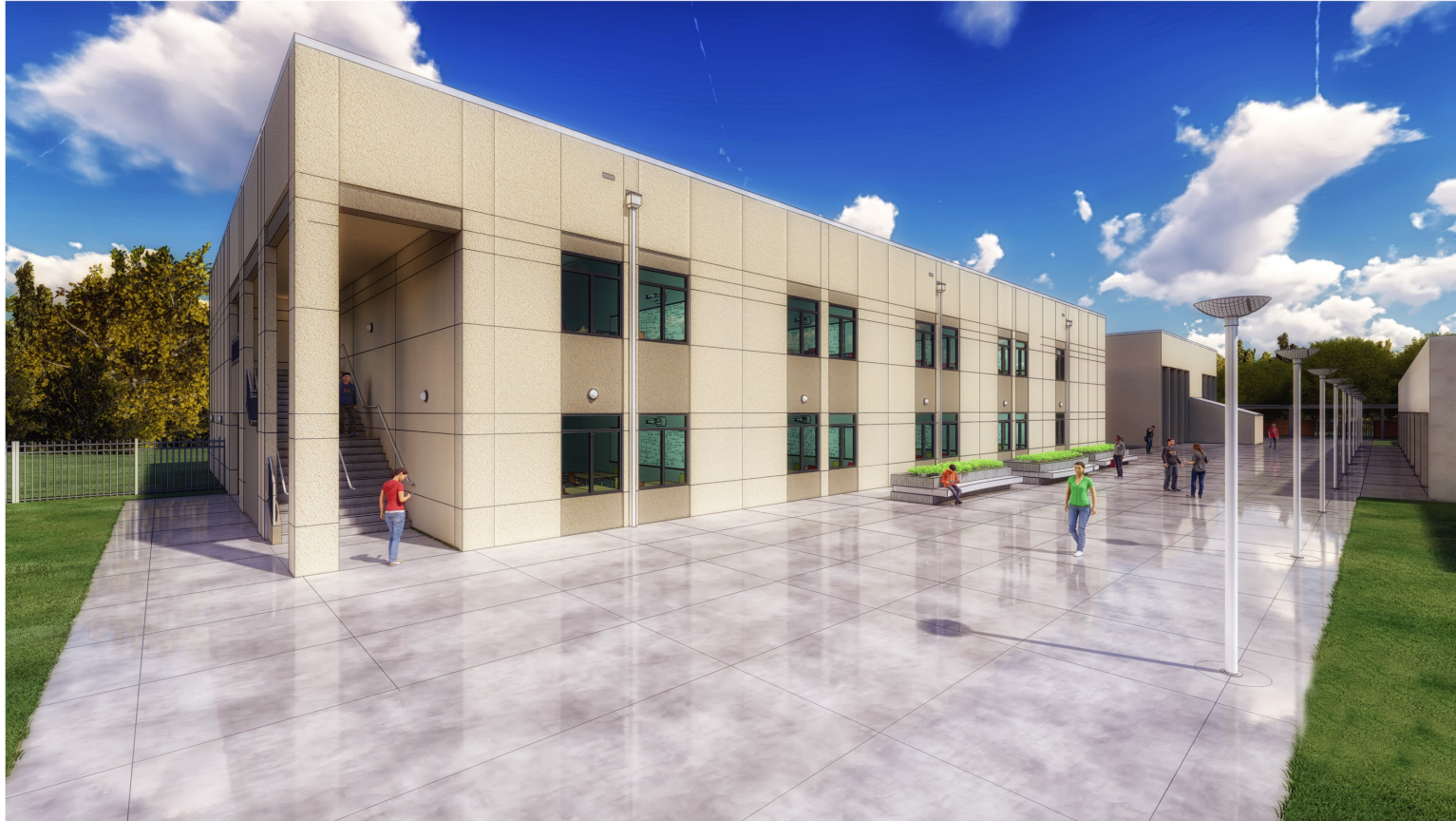
PHASE 1



ZEPHYRHILLS HIGH SCHOOL ADDITION AND RENOVATIONS



HEPNERARCHITECTS
Hepner Architects, Incorporated
AA 0002017 | ID 20001337



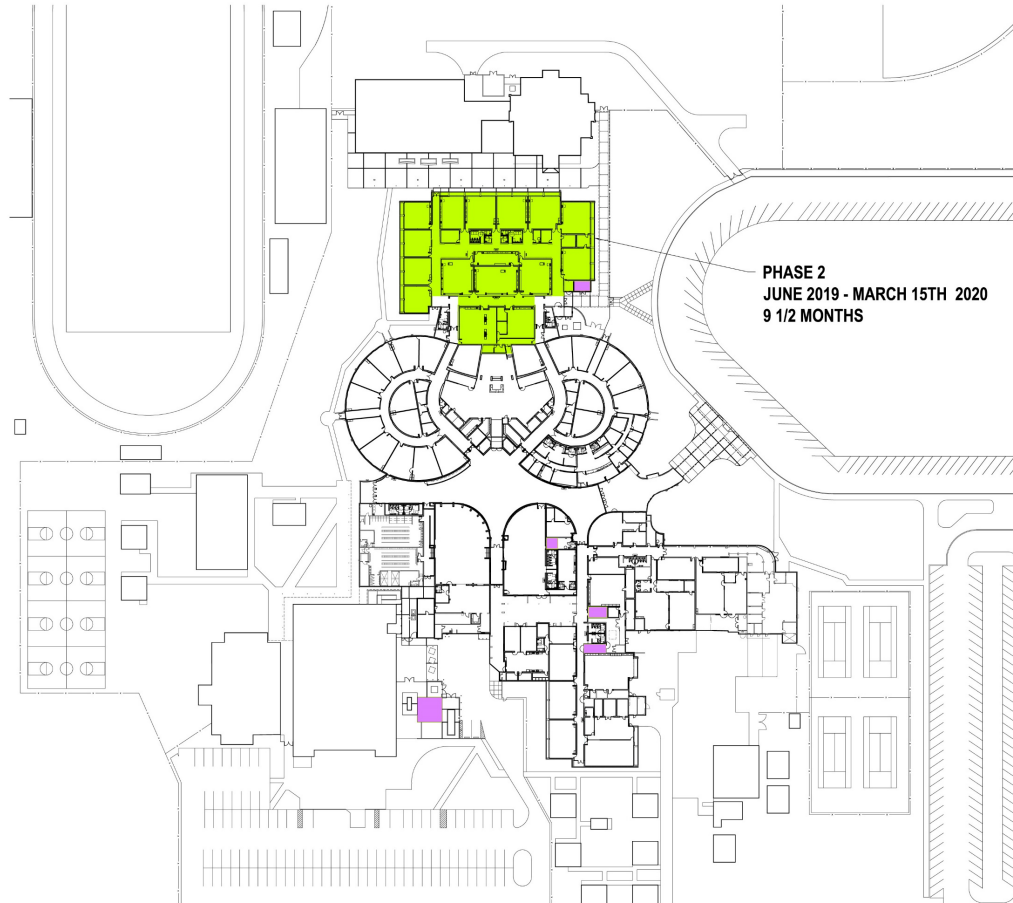
EXTERIOR RENDERING (CLASSROOM ADDITION)



ZEPHYRHILLS HIGH SCHOOL ADDITION AND RENOVATIONS



HEPNERARCHITECTS
 Hepner Architects, Incorporated
AA 0002817 | IB 20001337



PHASE 2
JUNE 2019 - MARCH 15TH 2020
9 1/2 MONTHS

PHASING LEGEND

- PHASE 1
COMPLETE, N.I.C.
- PHASE 2
JUNE 2019 - MARCH 15TH 2020
9 1/2 MONTHS
- PHASE 3
MARCH 15TH 2020 - DEC. 30, 2020
(EXCLUDES SUMMERS)
9 1/2 MONTHS
- PHASE 3A
MARCH 15TH 2020 - JULY 7 2020
4 1/2 MONTHS
- PHASE 3B
JUNE 2020 - DEC 2020
7 MONTHS
- PHASE 4
JAN 2021 - NOV. 2021
11 MONTHS
- PHASE 4A
JAN 2021 - AUGUST 2021
7 MONTHS
- PHASE 4B
JUNE 2021 - AUGUST 2021
2 1/2 MONTHS
- SUMMERS
- WORK IN PHASES 2-4

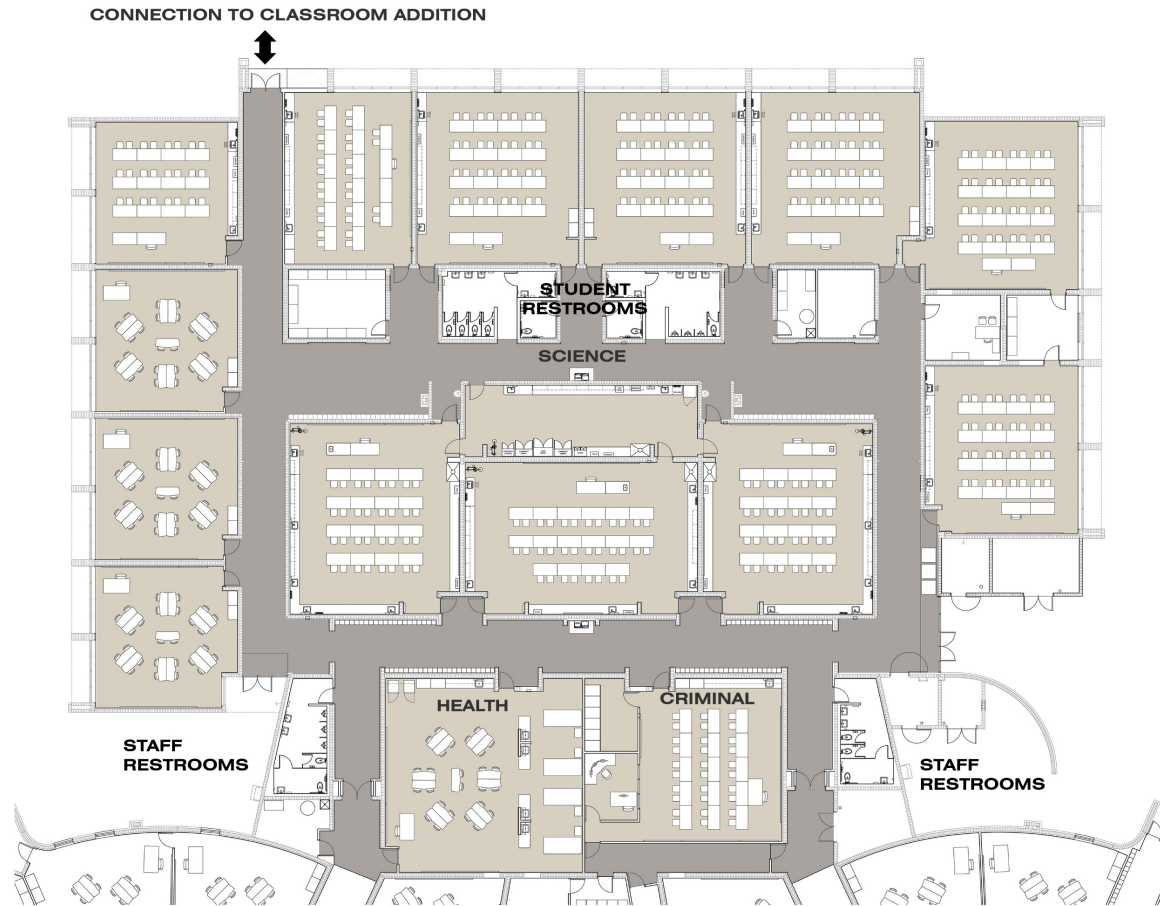
PHASE 2



ZEPHYRHILLS HIGH SCHOOL ADDITION AND RENOVATIONS



HEPNERARCHITECTS
Hepner Architects, Incorporated
AA 0002017 | ID 20001337



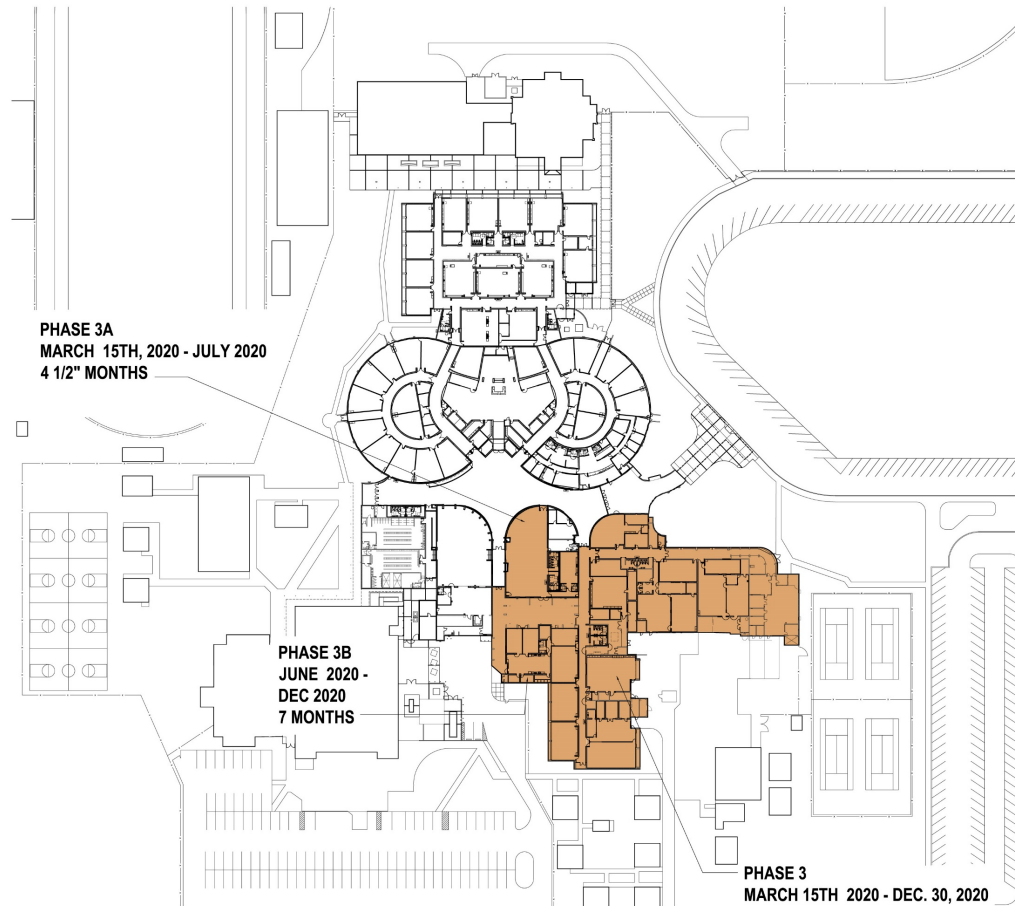
SCIENCE AND PRACTICAL EXPERIENCE LABS
(CRIMINAL JUSTICE AND HEALTH PROFESSIONS)



ZEPHYRHILLS HIGH SCHOOL ADDITION AND RENOVATIONS



HEPNERARCHITECTS
Hepner Architects, Incorporated
AA-0002817 | ID 20001337



PHASING LEGEND

	PHASE 1 COMPLETE, N.I.C.
	PHASE 2 JUNE 2019 - MARCH 15TH 2020 9 1/2 MONTHS
	PHASE 3 MARCH 15TH 2020 - DEC. 30, 2020 (EXCLUDES SUMMERS) 9 1/2 MONTHS
	PHASE 3A MARCH 15TH, 2020 - JULY 2020 4 1/2 MONTHS
	PHASE 3B JUNE 2020 - DEC 2020 7 MONTHS
	PHASE 4 JAN 2021 - NOV. 2021 11 MONTHS
	PHASE 4A JAN 2021 - AUGUST 2021 7 MONTHS
	PHASE 4B JUNE 2021 - AUGUST 2021 2 1/2 MONTHS
	SUMMERS
	WORK IN PHASES 2-4

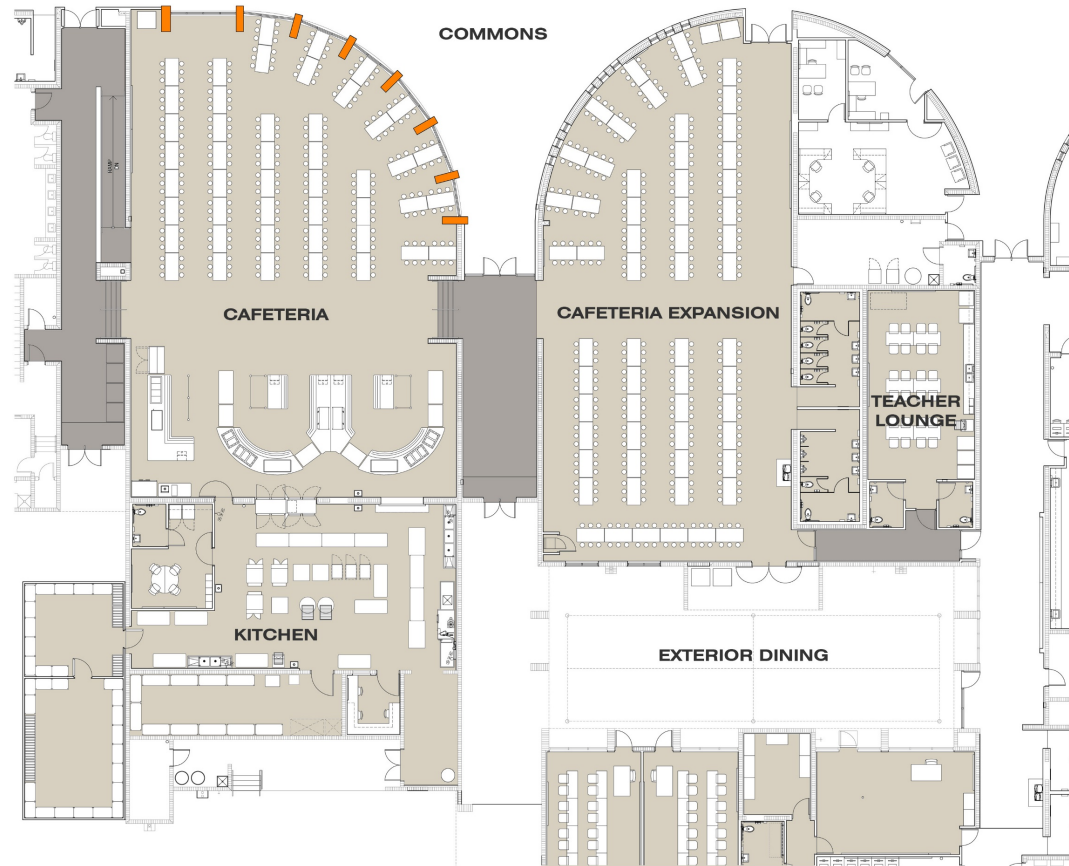
PHASE 3



ZEPHYRHILLS HIGH SCHOOL ADDITION AND RENOVATIONS



HEPNERARCHITECTS
Hepner Architects, Incorporated
AA-0002017 | ID 20001337



DINING AREAS



ZEPHYRHILLS HIGH SCHOOL ADDITION AND RENOVATIONS



HEPNERARCHITECTS
 Hepner Architects, Incorporated
 AA-0002817 | ID 20001337



CAFETERIA



ZEPHYRHILLS HIGH SCHOOL ADDITION AND RENOVATIONS



HEPNERARCHITECTS
Hepner Architects, Incorporated
AA 0002817 | ID 20001337



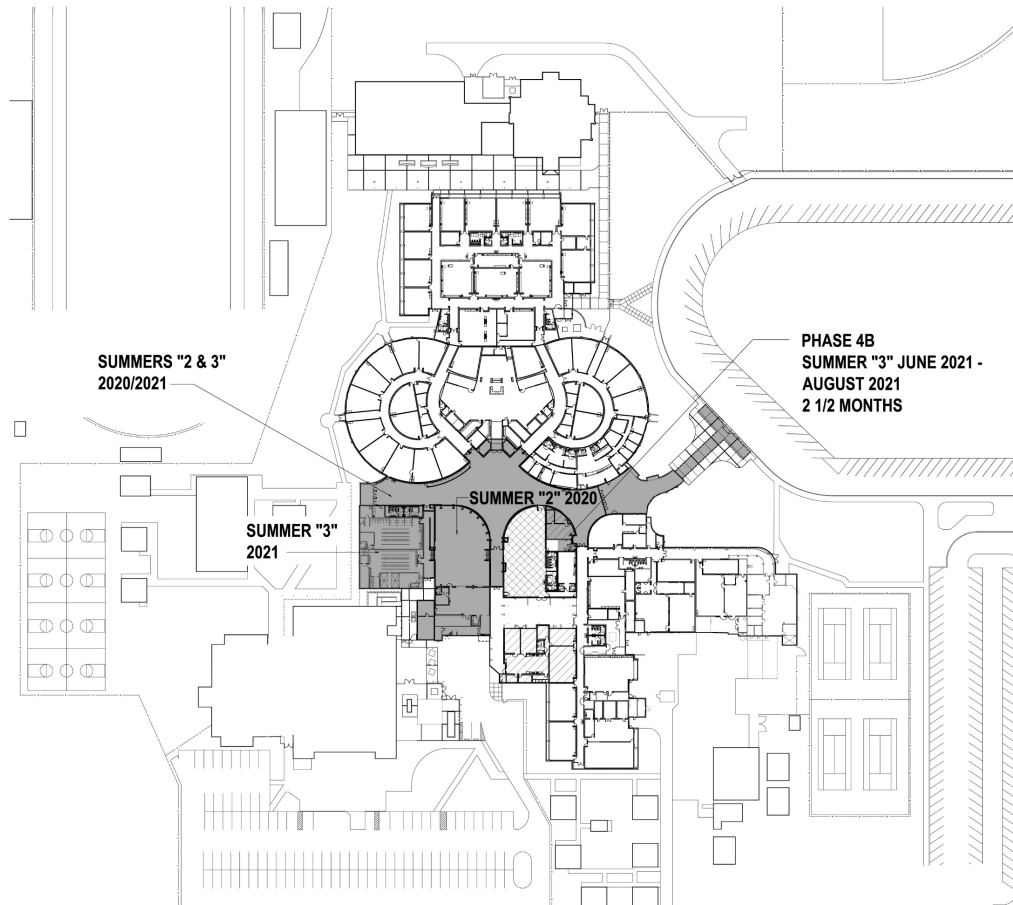
CAFETERIA EXPANSION



ZEPHYRHILLS HIGH SCHOOL ADDITION AND RENOVATIONS



HEPNERARCHITECTS
 Hepner Architects, Incorporated
AA 0002817 | IB 20001337



PHASING LEGEND

- PHASE 1
COMPLETE, N.I.C.
- PHASE 2
JUNE 2019 - MARCH 15TH 2020
9 1/2 MONTHS
- PHASE 3
MARCH 15TH 2020 - DEC. 30, 2020
(EXCLUDES SUMMERS)
9 1/2 MONTHS
- PHASE 3A
MARCH 15TH, 2020 - JULY 2020
4 1/2 MONTHS
- PHASE 3B
JUNE 2020 - DEC 2020
7 MONTHS
- PHASE 4
JAN 2021 - NOV. 2021
11 MONTHS
- PHASE 4A
JAN 2021 - AUGUST 2021
7 MONTHS
- PHASE 4B
JUNE 2021 - AUGUST 2021
2 1/2 MONTHS
- SUMMERS
- WORK IN PHASES 2-4

SUMMER PHASE



ZEPHYRHILLS HIGH SCHOOL ADDITION AND RENOVATIONS



HEPNERARCHITECTS
Hepner Architects, Incorporated
AA-0002017 | ID 20001337



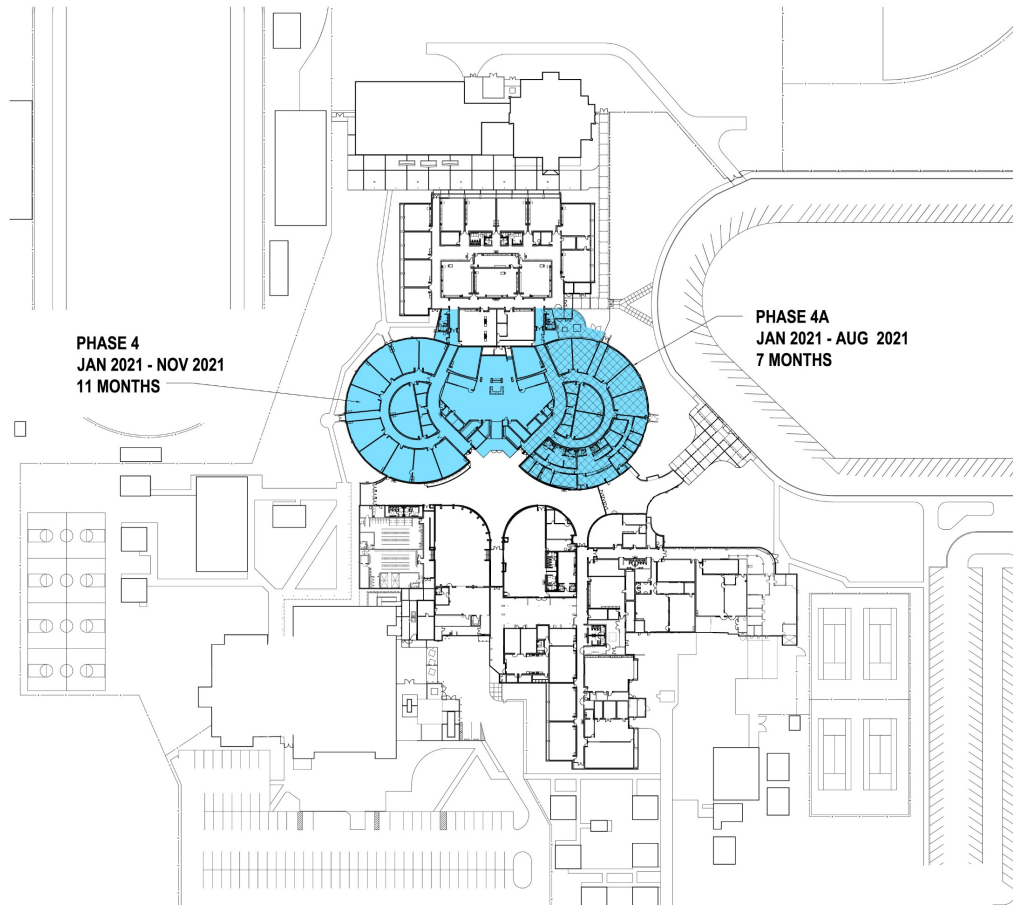
COMMONS



ZEPHYRHILLS HIGH SCHOOL ADDITION AND RENOVATIONS



HEPNERARCHITECTS
Hepner Architects, Incorporated
AA 0002817 | ID 20001337



PHASING LEGEND

	PHASE 1 COMPLETE, N.I.C.
	PHASE 2 JUNE 2019 - MARCH 15TH 2020 9 1/2 MONTHS
	PHASE 3 MARCH 15TH 2020 - DEC. 30, 2020 (EXCLUDES SUMMERS) 9 1/2 MONTHS
	PHASE 3A MARCH 15TH, 2020 - JULY 7 2020 4 1/2 MONTHS
	PHASE 3B JUNE 2020 - DEC 2020 7 MONTHS
	PHASE 4 JAN 2021 - NOV. 2021 11 MONTHS
	PHASE 4A JAN 2021 - AUGUST 2021 7 MONTHS
	PHASE 4B JUNE 2021 - AUGUST 2021 2 1/2 MONTHS
	SUMMERS
	WORK IN PHASES 2-4

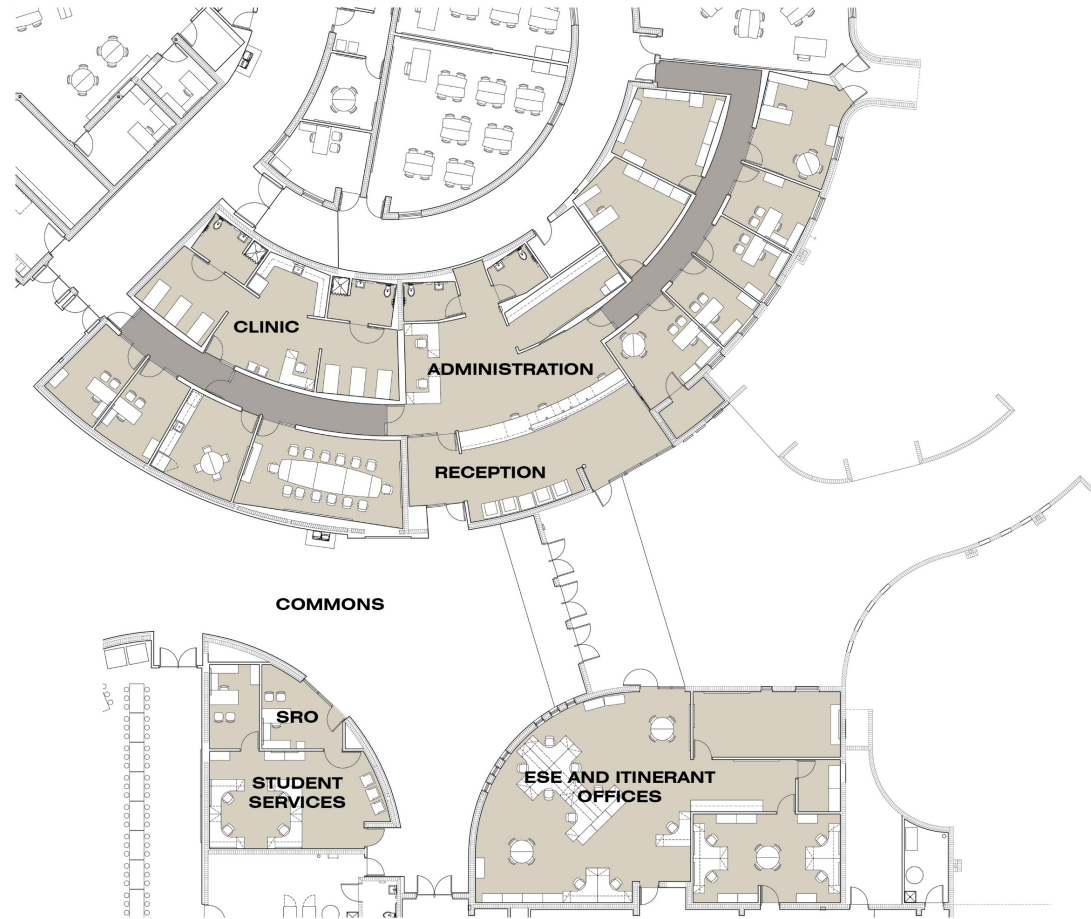
PHASE 4



ZEPHYRHILLS HIGH SCHOOL ADDITION AND RENOVATIONS



HEPNERARCHITECTS
Hepner Architects, Incorporated
AA 0002017 | ID 20001337



ADMINISTRATION AREA FLOOR PLAN



ZEPHYRHILLS HIGH SCHOOL ADDITION AND RENOVATIONS



HEPNERARCHITECTS
 Hepner Architects, Incorporated
AA 0002817 | ID 20001337



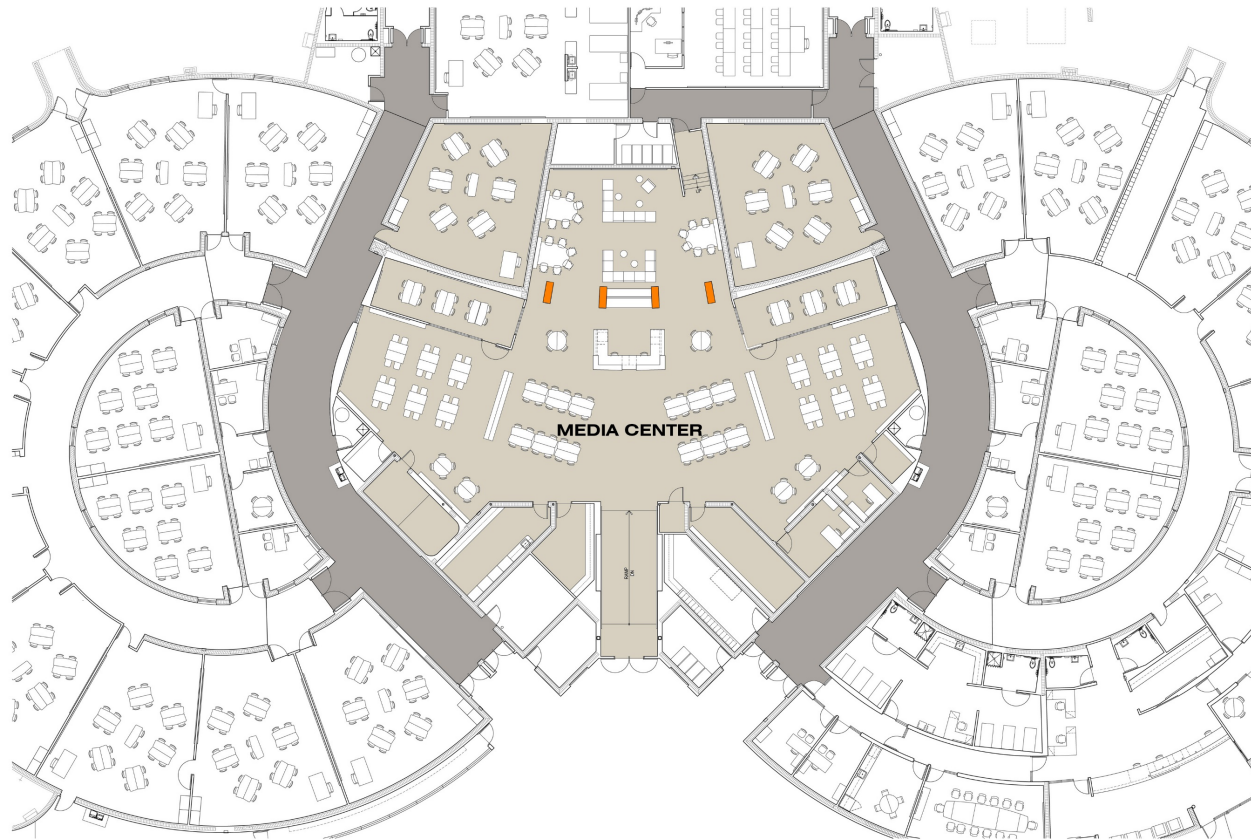
ADMINISTRATION RECEPTION



ZEPHYRHILLS HIGH SCHOOL ADDITION AND RENOVATIONS



HEPNERARCHITECTS
 Hepner Architects, Incorporated
AA-0002617 | ID 20001337



MEDIA CENTER



ZEPHYRHILLS HIGH SCHOOL ADDITION AND RENOVATIONS



HEPNERARCHITECTS
 Hepner Architects, Incorporated
 AA-0002817 | ID 20001337



MEDIA CENTER



ZEPHYRHILLS HIGH SCHOOL ADDITION AND RENOVATIONS



HEPNERARCHITECTS
Hepner Architects, Incorporated
AA-0002817 | IB 20001337



MEDIA CENTER



ZEPHYRHILLS HIGH SCHOOL ADDITION AND RENOVATIONS



HEPNERARCHITECTS
 Hepner Architects, Incorporated
AA 0002817 | ID 20001337



MEDIA CENTER



ZEPHYRHILLS HIGH SCHOOL ADDITION AND RENOVATIONS



HEPNERARCHITECTS
 Hepner Architects, Incorporated
AA 0002617 | ID 20001337

ZEPHYRHILLS HIGH SCHOOL RENOVATION AND ADDITIONS



HEPNERARCHITECTS
Hepner Architects, Incorporated
AA 000917 / IR 26091337