

**2017-2018
Elementary School "B"**

SCHOOL BOUNDARY COMMITTEE
Agenda

September 26, 2016

- Welcome & Introductions
- Timeline
- Purpose
- Guidelines
- Goals
 - Develop the Elementary School "B" boundary in order to help relieve Odessa, Oakstead and adjust Lake Myrtle Elementary Schools boundary as needed
- Today's Tasks
 - Identify and discuss any issues
 - Develop a draft boundary or multiple options for Elementary School "B"
 - Develop easy areas for ES B, ODES, OES, LMES
 - Talk about maybe areas for ES B, ODES, OES, LMES

2017-2018 TIMELINE **SCHOOL BOUNDARY DEVELOPMENT**

MEETINGS

September 26, 2016: First meeting of the School Boundary Committee (SBC) – Elementary School “B”

1. Overview of school boundary development process
2. Role of the School Boundary Committee
3. Identification of important issues
4. Planning Services report on student housing status: population growth projections, school housing capacities, target outcomes for boundary changes, etc.
5. Discussion of school boundary changes
6. Set next steps and data needed for the next boundary committee meeting

October 13, 2016 OES 10:30-12:30: Second meeting of the School Boundary Committee

1. Analysis of impact upon schools of various boundary change options
2. Formulate the “best” boundary configuration for the proposed new school boundary
3. Evaluate the degree to which the proposed new boundary satisfies the various boundary evaluation criteria
4. Sign off on proposed new boundaries or set a date for another boundary committee meeting if necessary

November 1, 2016 OES 6:00 p.m. -8:00 p.m.: Parent meeting

November 29, 2016 OES 10:30-12:30: Follow-up meeting of the School Boundary Committee

1. Discuss feedback from the parent meeting
2. Determine if any changes are needed to the proposed school boundaries prior to going to the School Board

KEY EVENTS

1. **Prior to December 1, 2016:** District Administrators and Committee members will conduct one evening meeting for each school, or set of schools, open to all parents, to explain the *proposed* changes to the school boundaries and to gather comments
2. **Prior to November 1, 2016:** Planning Department will deliver copies of the ***proposed*** new school boundary maps to all affected schools. Proposed new school boundary maps will be posted on the Planning Department’s rezoning web page
3. ***Prior to November 20, 2016:** Planning Department will notify the School Board that the “2017-2018 School Attendance Boundaries” will be presented for consideration and adoption at the December 20, 2016 and the January 17, 2017 School Board meetings
4. ***Prior to November 20, 2016:** Planning Department will publish legal notice in local newspapers concerning intended School Board action on the 2017-2018 School Attendance Boundaries. A copy of this notice will also be posted on the Planning Department’s website
5. **Prior to December 1, 2016:** Communications Department will deliver copies of the “Superintendent’s Letter to Parents” to all affected schools for immediate distribution to all students and parents
6. ***December 20, 2016:** Date scheduled for “First Reading” of the *proposed* new boundaries by the School Board
7. ***January 17, 2017:** Date scheduled for “Adoption” of the *proposed* new school boundaries by the School Board

* Events required by law.

SCHOOL BOUNDARY COMMITTEE

PURPOSE:

The Purpose of the School Boundary Committee is to:

- Develop and recommend to the Superintendent and the School Board proposed new school attendance boundaries that best meet established guidelines
- Provide direction and advice to the Technical Assistance Subcommittee
- Review and critique the work of the Technical Assistance Subcommittee
- Represent the students, parents, communities, schools and district

ROLES and RESPONSIBILITIES:

Roles and Responsibilities of the School Boundary Committee are:

- Make a commitment to attend all meetings and participate in communicating with the community
- Provide feedback to the Technical Assistance Subcommittee
- Assist in identification of critical issues
- Help develop a school based communication plan that both informs all parents of the process and provides a means for the parents to provide input to their SBC representatives
- Participate in presentations to SAC committees, PTA's, and school organizations
- Provide for rumor control

TECHNICAL ASSISTANCE SUBCOMMITTEE

ROLE and FUNCTION:

The role of the Technical Assistance Subcommittee is to develop proposed new school attendance boundaries with advice and direction from the School Boundary Committee members. Such proposed new boundaries are to be supported by information which may include current school boundary maps, student location maps, statistical reports on student population growth trends, school housing capacity data, and analysis of the impact and effect on schools of proposed changes to current school boundary areas.

GUIDELINES

for the Development of School Attendance Boundaries

School attendance boundaries should:

Socioeconomic Balance

Provide a balance of racial and economic diversity among the populations served.

Feeder Patterns

Maintain an in-line feeder pattern to the greatest extent possible.

Future Growth and Capacity

Appropriately provide for future growth and optimum utilization of schools within the proposed boundaries.

Transportation

Provide for the safe and efficient transportation of students to and from school.

Subdivision Integrity

To the extent possible, incorporate complete neighborhood communities.

Planning Integrity

To the extent possible, should consider long term school construction plans in order to provide long term stability to areas affected by proposed boundary changes.

A.D.M. Projections

SCHOOL YEAR:

2017-2018

SCHOOL:

LAKE MYRTLE ELEM.

GRADE

LEVEL

K
1
2
3
4
5
6
7
8
9
10
11
12
K-12

2012 FINAL A.D.M.	2013 FINAL A.D.M.	2014 FINAL A.D.M.	2015 FINAL A.D.M.	2016 FINAL A.D.M.	2017 Rpt. #51 Annualized	1 YEAR SCHOOL COHORT	2018 PROJECTED A.D.M.	2018 PROJECTED GROWTH
89	94	102	101	89	88	1.0000	94	6
122	99	99	100	97	94	1.0562	93	-1
115	113	103	101	107	98	1.0103	95	-3
130	121	119	113	95	116	1.0841	106	-10
114	116	115	110	116	87	0.9158	106	19
143	112	127	110	91	117	1.0086	88	-29
							0	0
							0	0
							0	0
							0	0
							0	0
							0	0
							0	0
713	655	665	635	595	600		582	-18

SCHOOL POPULATION HISTORY

	ADM	GROWTH
1998-99	944	
1999-00	948	4
2000-01	1005	57
2001-02	1008	3
2002-03	1028	20
2003-04	856	-172
2004-05	836	-20
2005-06	809	-27
2006-07	811	2
2007-08	801	-10

	ADM	GROWTH
2008-09	756	-45
2009-10	802	46
2010-11	762	-40
2011-12	713	-49
2012-13	655	-58
2013-14	665	10
2014-15	635	-30
2015-16	595	-40
2016-17	600	5
2017-18	582	-18

A.D.M. Projections

SCHOOL YEAR:

2017-2018SCHOOL: **OAKSTEAD ELEM.**

GRADE LEVEL	2012 FINAL A.D.M.	2013 FINAL A.D.M.	2014 FINAL A.D.M.	2015 FINAL A.D.M.	2016 FINAL A.D.M.	2017 Rpt. #51 Annualized	1 YEAR SCHOOL COHORT	2018 PROJECTED A.D.M.	2018 PROJECTED GROWTH
K	155	191	209	184	172	174	1.0000	179	5
1	172	159	183	210	180	190	1.1047	192	2
2	164	183	173	195	153	196	1.0889	207	11
3	178	170	184	180	198	182	1.1895	233	51
4	166	180	171	169	157	203	1.0253	187	-16
5	161	174	192	180	168	172	1.0955	222	50
6								0	0
7								0	0
8								0	0
9								0	0
10								0	0
11								0	0
12								0	0
K-12	996	1057	1112	1118	1028	1117		1220	103

SCHOOL POPULATION HISTORY

	ADM	GROWTH
1998-99		
1999-00		0
2000-01		0
2001-02		0
2002-03		0
2003-04		0
2004-05		0
2005-06		0
2006-07	725	725
2007-08	983	258

	ADM	GROWTH
2008-09	1077	94
2009-10	1044	-33
2010-11	955	-89
2011-12	996	41
2012-13	1057	61
2013-14	1112	55
2014-15	1118	6
2015-16	1028	-90
2016-17	1117	89
2017-18	1220	103

*SMES

A.D.M. Projections

SCHOOL YEAR:

2017-2018

SCHOOL: ODESSA ELEM.									
GRADE	2012 FINAL A.D.M.	2013 FINAL A.D.M.	2014 FINAL A.D.M.	2015 FINAL A.D.M.	2016 FINAL A.D.M.	2017 Rpt. #51 Annualized	1 YEAR SCHOOL COHORT	2018 PROJECTED A.D.M.	2018 PROJECTED GROWTH
LEVEL									
K	127	128	125	142	156	165	1.0000	156	-9
1	114	121	140	141	154	171	1.0962	181	10
2	111	111	122	141	152	167	1.0844	185	18
3	116	125	120	129	160	181	1.1908	199	18
4	101	106	124	129	141	170	1.0625	192	22
5	89	94	109	135	147	153	1.0851	184	31
6								0	0
7								0	0
8								0	0
9								0	0
10								0	0
11								0	0
12								0	0
K-12	658	685	740	817	910	1007		1098	91

SCHOOL POPULATION HISTORY

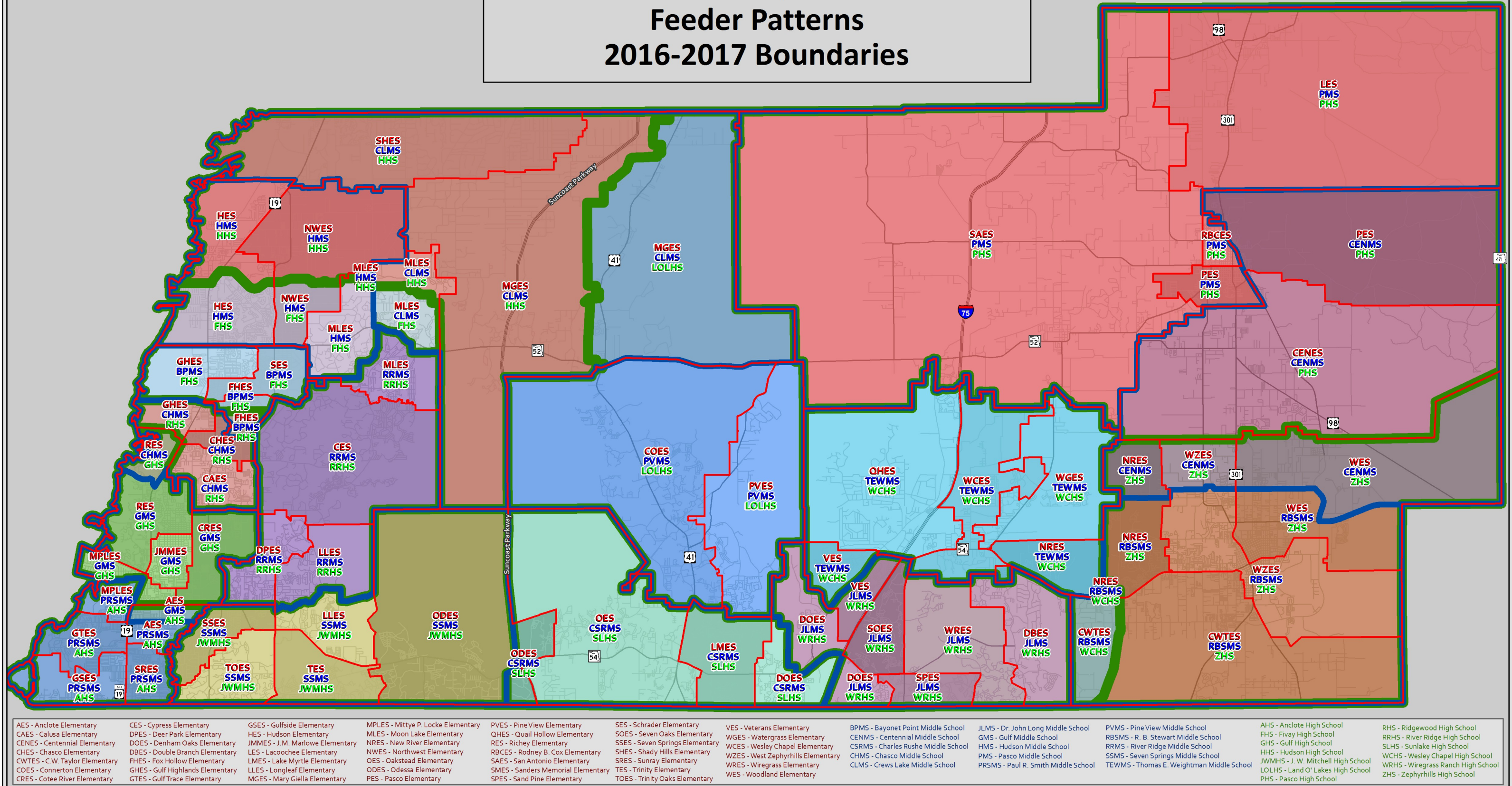
	ADM	GROWTH
1998-99	0	
1999-00	0	0
2000-01	0	0
2001-02	0	0
2002-03	0	0
2003-04	0	0
2004-05	0	0
2005-06	0	0
2006-07	0	0
2007-08	0	0

	ADM	GROWTH
2008-09	0	0
2009-10	0	0
2010-11	622	622
2011-12	658	36
2012-13	685	27
2013-14	740	55
2014-15	817	77
2015-16	910	93
2016-17	1007	97
2017-18	1098	91

B Boundaries: Summary Page

		Enrolled	Boundary	Over/Under	Boundary %	Boundary %	Boundary %	Boundary %
ES Base Data	Perm Cap	Students	Students	Capacity	Capacity	Low Income	Minority	ESE
Odessa Elementary	762	1,000	1,058	296	139%	27%	29%	17%
Oakstead Elementary	762	1,095	1,467	705	193%	27%	32%	15%
Lake Myrtle Elementary	736	587	570	-166	77%	36%	28%	17%

Pasco County Schools Feeder Patterns 2016-2017 Boundaries



Planning Services
Pasco County Schools
June 14, 2016

Elementary Boundary
 Middle Boundary
 High Boundary

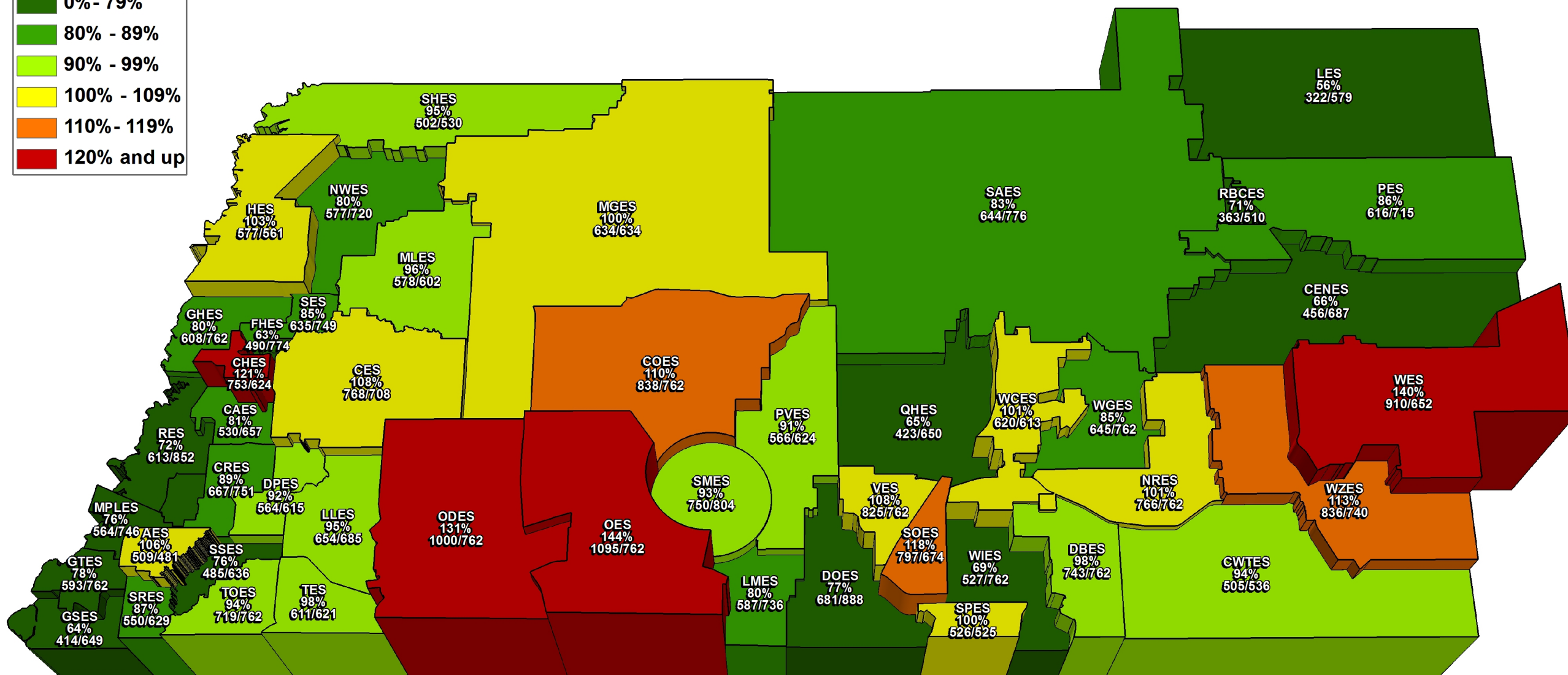
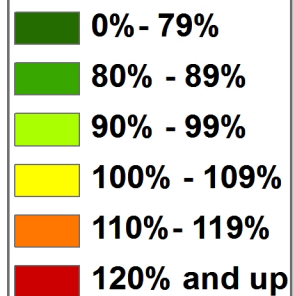
0 2 4 8 Miles





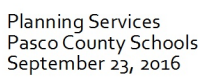
Elementary School Enrollment 20th Day Membership 2016/2017

Percent Capacity



B Elementary School Boundaries: BASE DATA-2016-17

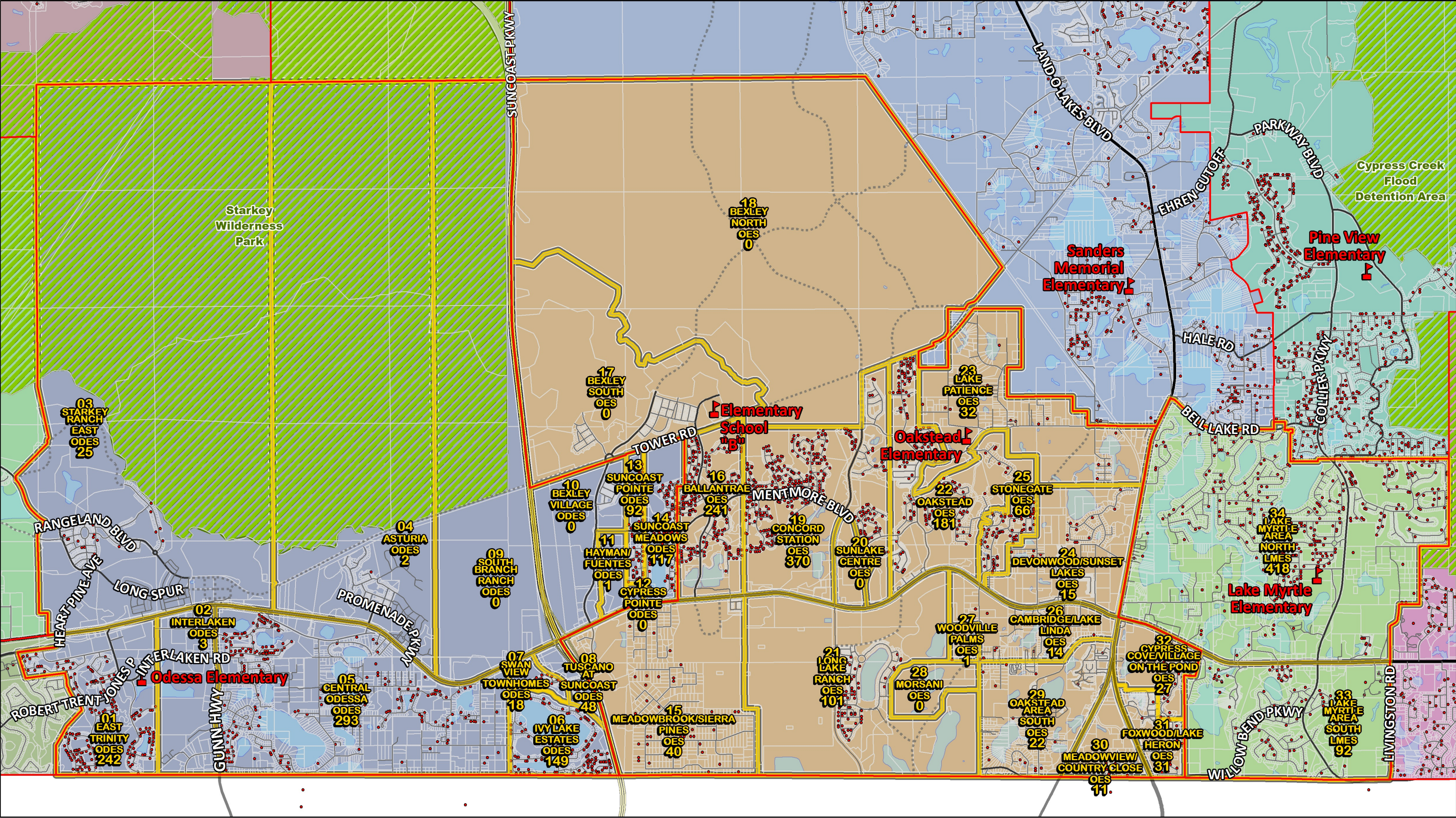
																																				TOTAL	TOTAL	BASE	NET	BOUNDARY	BOUNDARY	OVER / UNDER			
																																				SCHOOL	ENROLL	UTILIZATION	BOUNDARY	AREA	UTILIZATION	CAPACITY			
TOTAL POPULATION	AREA	AREA	AREA	AREA	AREA	AREA	AREA	AREA	AREA	AREA	AREA	AREA	AREA	AREA	AREA	AREA	AREA	AREA	AREA	AREA	AREA	AREA	AREA	AREA	AREA	AREA	AREA	AREA	AREA	AREA	AREA	NO	CHOICE	CHOICE	PERMANENT	STUDENTS	PERCENT	CHANGE	COUNT	PERCENT	AREA				
BUILDING UTILIZATION	1	2	3	4	5	6	7	8	9	10	11	12	13	14	15	16	17	18	19	20	21	22	23	24	25	26	27	28	29	30	31	32	33	34	MATCH	IN	OUT	CAPACITY	K-5	TERMS	STUDENTS	AREA	COUNT		
	TE	IL	SRE	AS	CE	IVE	SVT	TS	SBR	BV	HFF	CP	SP	SM	MSP	BT	BS	BN	CS	SC	LLR	OS	LP	DSL	SG	CLL	WP	MS	OAS	MCC	FLH	CCVP	LMAS	LMAN				1/21/2016	9/12/16	COUNT		COUNT			
Odessa Elementary	246	3	25	2	309	156	18	50	0	0	1	0	109	139																	0	77	134	762	1,000	131%	1	1058	139%	297					
Oakstead Elementary															50	326	0	0	472	0	113	226	32	24	106	16	1	0	23	16	33	29			0	64	437	762	1,095	144%	-1	1467	193%	704	
Lake Myrtle Elementary																																100	470			0	150	133	736	587	80%	0	570	77%	-166
TOTALS	246	3	25	2	309	156	18	50	0	0	1	0	109	139	50	326	0	0	472	0	113	226	32	24	106	16	1	0	23	16	33	29	100	470	0	291	704	2260	2682	119%	0	3095	137%	835	
	AREA	AREA	AREA	AREA	AREA	AREA	AREA	AREA	AREA	AREA	AREA	AREA	AREA	AREA	AREA	AREA	AREA	AREA	AREA	AREA	AREA	AREA	AREA	AREA	AREA	AREA	AREA	AREA	AREA	AREA	AREA	AREA	AREA	AREA											
LOW INCOME	1	2	3	4	5	6	7	8	9	10	11	12	13	14	15	16	17	18	19	20	21	22	23	24	25	26	27	28	29	30	31	32	33	34											
	SW	SE	STEN	CE	TO	CCTC	VE	SON	DBCC	NW	CGSO	SON	LNW	MPI	WRES	CW	MPIVN	MPIII	MPIVS	MPIVS	WN	WS	UP	NRR	NRS	NRN	WGES	WCES	QHE	GO	LO	QHW	HU	PHW											
Odessa Elementary	42	3	0	0	94	21	6	24	0	0	0	0	49	51																															
Oakstead Elementary																25	86	0	0	114	0	17	53	22	8	6	16	0	0	6	3	19	17												
Lake Myrtle Elementary																																	40	164											
TOTALS	42	3	0	0	94	21	6	24	0	0	0	0	49	51	25	86	0	0	114	0	17	53	22	8	6	16	0	0	6	3	19	17	40	164											
Percentages	17%	100%	0%	0%	30%	0%	33%	48%	0%	0%	0%	0%	45%	37%	50%	26%	0%	0%	24%	0%	15%	0%	69%	33%	6%	100%	0%	0%	26%	19%	58%	59%	40%	35%											
	AREA	AREA	AREA	AREA	AREA	AREA	AREA	AREA	AREA	AREA	AREA	AREA	AREA	AREA	AREA	AREA	AREA	AREA	AREA	AREA	AREA	AREA	AREA	AREA	AREA	AREA	AREA	AREA	AREA	AREA	AREA	AREA	AREA	AREA											
MINORITY STUDENTS	1	2	3	4	5	6	7	8	9	10	11	12	13	14	15	16	17	18	19	20	21	22	23	24	25	26	27	28	29	30	31	32	33	34											
	SW	SE	STEN	CE	TO	CCTC	VE	SON	DBCC	NW	CGSO	SON	LNW	MPI	WRES	CW	MPIVN	MPIII	MPIVS	MPIVS	WN	WS	UP	NRR	NRS	NRN	WGES	WCES	QHE	GO	LO	QHW	HU	PHW											
Odessa Elementary	51	0	5	0	77	41	5	17	0	0	0	0	51	56																															
Oakstead Elementary																14	130	0	0	177	0	25	64	3	8	28	2	0	0	2	4	6	9												
Lake Myrtle Elementary																																	32	126											
TOTALS	51	0	5	0	77	41	5	17	0	0	0	0	51	56	14	130	0	0	177	0	25	64	3	8	28	2	0	0	2	4	6	9	32	126											
Percentages	21%	0%	20%	0%	25%	0%	28%	34%	0%	0%	0%	0%	47%	40%	28%	40%	0%	0%	38%	0%	22%	0%	9%	33%	26%	13%	0%	0%	9%	25%	18%	31%	32%	27%											
	AREA	AREA	AREA	AREA	AREA	AREA	AREA	AREA	AREA	AREA	AREA	AREA	AREA	AREA	AREA	AREA	AREA	AREA	AREA	AREA	AREA	AREA	AREA	AREA	AREA	AREA	AREA	AREA	AREA	AREA	AREA	AREA	AREA	AREA											
ESE STUDENTS	1	2	3	4	5	6	7	8	9	10	11	12	13	14	15	16	17	18	19	20	21	22	23	24	25	26	27	28	29	30	31	32	33	34											
	SW	SE	STEN	CE	TO	CCTC	VE	SON	DBCC	NW	CGSO	SON	LNW	MPI	WRES	CW	MPIVN	MPIII	MPIVS	MPIVS	WN	WS	UP	NRR	NRS	NRN	WGES	WCES	QHE	GO	LO	QHW	HU	PHW											
Odessa Elementary	43	0	2	0	42	17	2	5	0	0	1	0	25	26	15	59	0	0	64	0	5	46	8	4	17	3	0	0	7	2	6	5													
Oakstead Elementary																	59	0	0	64	0	5	46	8	4	17	3	0	0	7	2	6	5												
Lake Myrtle Elementary																																	15	81											
TOTALS	43	0	2	0	42	17	2	5	0	0	1	0	25	26	15	59	0	0	64	0	5	46	8	4	17	3	0	0	7	2	6	5	15	81											
Percentages	17%	0%	8%	0%	14%	0%	11%	10%	0%	0%	100%	0%	23%	19%	30%	18%	0%	0%	14%	0%	4%	0%	25%	17%	16%	19%	0%	0%	30%	13%	18%	17%	15%	17%											





Elementary School B Boundary Change Areas

Sanders Memorial Elementary School Students and Imagine School of Land O' Lakes Students Subtracted





Elementary School B Projected Future Students - Platted & Unplatted

