



Volume 6, Issue 3

March 2010

Dates To Remember

2 April
Teacher Planning Day
(No School)

5-9 April
Spring Break

31 May
Memorial Day
(No School)

In This Issue

Doing Whatever it Takes
Page 1

Employee Recognition
Page 2, 3

White Christmas
Challenge
Page 3

Worksite Safety
Committee
Page 4

Customer Service
Page 4

Congratulations to Will Napolitano, new Area Manager at Northwest Compound, and to Daniel Grant, new ESE Route Specialist at Northwest Compound.

THE TRANSIT TRIBUNE

Pasco District Schools Transportation

Doing Whatever it Takes

Teri Daniel

Tuesday, January 12th started out like any ordinary work day. Up at 4:00 AM, two eyes that look like slits in a frizz ball, the smell of fresh coffee brewing. I tip-toe out on the deck and take a peek at the thermometer. Brrrr..19°.

I bundle up in three layers of clothing thinking I may have to be out on the road covering routes.



Begin here

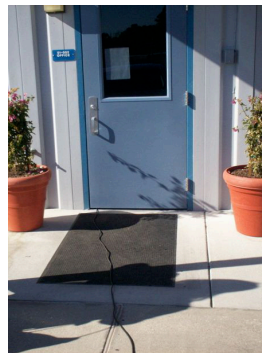
By 5:15, I'm out the door in a flash for my daily morning trek to the big town of Land O' Lakes.

As I approach US 41 and Ehren Cutoff, I see lots

of red and blue flashing lights. I know it's not Christmas, so I'm figuring the worst, an accident perhaps, but no, it's just the traffic lights out. There are several sheriff cruisers on scene, but no one is directing traffic. This is just great! I creep my way through the intersection making a left and head to Central Compound.

Do you know how dark it is in the country with nothing but the stars and a quarter moon shining? I've lost Central. All I see is a sea of red, yellow, and white flashing lights. Flashing lights again!

As my eyes adjust, I see the Dynasty (the bus garage) through the haze of exhaust fumes and smoke.



Follow that cord

As I emerge from the rows of buses and

see the front office I say to myself, "This is going to be one of those 'This is the life you have chosen,' days." It's dark everywhere. Now I know it's going to be bad. We have no power... no phone... no radio... no coffee... no bathroom, and we have bus evacuations scheduled today! Is it time to go home yet?

I wonder out loud, "Why in the world are David and Larry parked with their head lights shining on the sidewalk? I get it, light the entrance for safety. Somebody might trip over those extension cords, though... Wait, a cord, hey what's that for?"

I open the door and, lo and behold, there is a drop light and the bulb is shining 75 watts bright. "C- to Central Garage..." Is that the radio I hear? How can this be? Everyone is jovial and laughing. I hol-



Not Quite in the Dark

lered out "I guess y'all know the lights are out at Ehren Cutoff and 52?" Silence. Then David said with that little smirk on his face, "That's nothing new. They're always out, and it's always dark at Ehren Cutoff and SR 52, Teri."

After things calm down and the bedlam has passed, David and Larry explain how, with the help of several employees, they hooked up a 400 watt inverter to David's Toyota Tundra and ran extension cords into the building for light and the dispatch radio.

Because of ingenuity and country know-how, Central Garage ran 85 route packages without a hitch and without disruption of service to our students. Along with the wonderful and proud employees of which I am a member, we have elected to retain our motto GET-ER-DONE. Therefore we will be referred to as Central Get-Er-Done Garage.

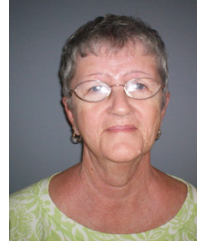
EMPLOYEE RECOGNITION

The most important element of any organization is the people, those individuals who come to work and daily demonstrate the talent, skill, and knowledge to perform their varied responsibilities with precision, plus the compassion and concern that compels them to perform beyond those responsibilities. When you see the individuals listed on these pages, commend them on their longevity and perseverance. All of you together, and each of you individually, are our most important asset.

THIRTY YEARS



CHRISTINE HUGHES
Operations
Finance Assistant II
September 6, 1978



PATRICIA WHITE
West
Assistant
October 18, 1978

TWENTY-FIVE YEARS

NICHOLS, HOWARD	Central	Mechanic I	October 31, 1983
PENNINGTON, MUNCY	East	Shop Coordinator	September 12, 1983

TWENTY YEARS

EMMANUEL, LETITIA	Southeast	Operator	August 22, 1988
DANIEL, THERESA	Central	ESE Route Specialist	September 19, 1988
HELMS, LORA	East	Relief Operator	August 22, 1988
HUNTOON, KAREN	Northwest	Operator	October 3, 1988
ROSS, LUVENIA	East	Relief Operator	August 22, 1988
TILLOTSON, KATHLEEN	Northwest	Operator	September 19, 1988

FIFTEEN YEARS

BOLTON, SUSAN	Northwest	Route Specialist	August 27, 1993
BRENSKELLE, PATRICIA	West	Operator	August 27, 1993
DEMAIO, DONNA	East	Operator	August 30, 1993

TEN YEARS

BLACK, KATHY	East	Relief Operator	October 5, 1998
COPELAND, EDNA	West	Route Specialist	August 21, 1998
DELETETSKY, ROBERTA	Northwest	Assistant	June 1, 1999
FERRALL, STEVE	West	Parts Specialist	May 24, 1999
KLEINHANS JR, JOHN	Northwest	Relief Operator	May 3, 1999
LAMBERT, JAMES	Northwest	Assistant	August 21, 1998
LUCAS, RAYMOND	West	Operator	September 16, 1998
MATUSZAK, VIRGINIA	Southeast	Operator	October 22, 1998
MIKULLA, ERNEST	Central	Operator	August 21, 1998
MORRELL, EDWIN	West	Operator	September 8, 1998
SUNDEAN, ROBERT	Northwest	Operator	September 16, 1998
WALTER, ROBIN	East	Route Specialist	June 1, 1999

FIVE YEARS

AITCHISON JR, JOHN	West	Operator	August 8, 2003
ARNOLD, JOYCE	West	Relief Operator	February 5, 2004
BELL, SHERRI	Central	Operator	November 25, 2003
BRIENZA, KARIN	Northwest	Operator	October 2, 2003
BUTLER, DIANA	Northwest	Operator	October 30, 2003
DELETETSKY L, ROBERT	West	Assistant	April 12, 2004
DRUM, KATHLEEN	Northwest	Assistant	September 3, 2003
ELLERBEE, LINDA	Central	Assistant	April 26, 2004
ERAZO, DENISE	Southeast	Operator	August 8, 2003
HUNT, VELVET	East	Finance Assistant II	August 8, 2003
JOHNSON, NANCY	West	Assistant	August 8, 2003
JOHNSON, WAYNE	West	Operator	August 8, 2003
KLEBES, ANN	Southeast	Assistant	April 20, 2004
LESTER, CYNTHIA	Northwest	Assistant	October 14, 2003
MACDONALD, ANGELA	West	Operator	September 19, 2002
MARTINEZ, AMANDA	Central	Operator	August 8, 2003
MOORE, THERESA	East	Assistant	October 15, 2003
PENTLAND, THOMAS	Central	Operator	August 8, 2003
PHILIPSEN, JAY	East	Operator	February 5, 2004
PILIPUF, DENNIS	Northwest	Operator	August 8, 2003
PRESCOTT, SANDRA	Central	Operator	August 8, 2003
PROVENZANO, CAROLYN	Central	Operator	March 25, 2004
RAIMUNDI, JUAN	Central	Route Specialist	August 8, 2003
ROSARIO, GRACE	West	Assistant	April 12, 2004
SCHNEIDER, GINA	East	Operator	February 20, 2004
SUSICK, BRENDA	Central	Relief Operator	March 25, 2004
TROJAK, KATARINA	West	Operator	August 8, 2003
TRUELOVE, DEANNA	Central	Operator	May 17, 2004
TUCKER, DAVID	East	Assistant	August 8, 2003
WALLACE, JUNE	Central	Operator	August 8, 2003
WILLIAMSON, LINDA	Northwest	Assistant	August 8, 2003
WITTENBERG, ROBERT	Central	Operator	October 2, 2003
WORKMAN, FRANKLIN	Southeast	Operator	February 12, 2004

White Christmas Challenge

Based on the poem, 'Twas the Night Before... by Jack Greene

On Thursday, December 17, 2009, Jack, AKA The Big Elf, loaded up the mini van with all his helpers and headed East. *"The first we entered through a hallway, cold and dark. But our dismay was qualm, as we followed our mark!"* When we arrived at East, it was dark and cold, but that was just a prelude to a very warm welcome. Smiles, singing, good food, and lots of fun. *"East is the prettiest, traditional, with stars in the ceiling!"*

"On-ward and Southward we go like the light! Diego doesn't like my driving, but on ward the flight! As we enter Southeast, it's quite like the night?" Why so dark? Shhhh, you'll wake the children. The office is transformed into a bunkhouse and everyone is dreaming of their favorite things. Of

course there's more food, and we receive snowman poop for our stockings.

"On ward again to Central we're bound! Not knowing what adventure soon will be found! The sign says "Film Studio" but we enter with caution." And rightly so. Someone has stolen our practically new office digs and replaced them with a film studio. The attention to detail is amazing, and the singing, accompanied by a baby, baby grand is quite good, too.

West had to postpone their show due to weather, but the wait was worth it. *"The Wondrous "Juana and Juanita Sisters" save the day! Santa is on hand for photos and hugs. There is cookies and hot chocolate in all of our mugs."*

This time the trophy goes to West. Just wait till next year.

Worksite Safety Committee

Jack Greene

The Work Site Safety Committee met on Thursday, January 21 to review site concerns and employee injuries occurring July 1, 2009 through October 15, 2009, and October 16, 2009, through December 22, 2009. Congratulations are due to the staff of Northwest Compound for zero avoidable injuries for July 1st, through October 15th. Congratulations are also due to the staff of the Central and East Compounds for having zero injuries from October 16th through December 22nd.

Your site-elected representatives for each Compound are: West Compound, Kurt Melange, Relief Driver; Northwest Compound, Linda Himebaugh, Driver; Central Compound, Johnnie Hood, Driver; East Compound, Kathy Black, Relief Driver, and Southeast Compound, Lee Beville, Driver.

The goal of the Work Site Safety Committee is to raise all of our employee's awareness of safety for ourselves, our students, and our community foremost in our thoughts and actions at all times.



Customer Service

On Thursday, January 7, 2010, all of the supervisors, coordinators, secretaries and finance people, managers, and specialists gathered at Marchman Technical Education Center for a day of important training. Sometimes we get so caught up in the myriad tasks and responsibilities of our respective jobs, that we forget the enormity of our responsibility.

Without each of us performing our jobs, the wheels of education would quickly halt. It's easy to forget, too, that we carry lives, hopes, and dreams. These lives are our customers, and customer service is an integral part of everything we do.

School Bus Transportation, holding thousands of lives in the balance twice every school day.



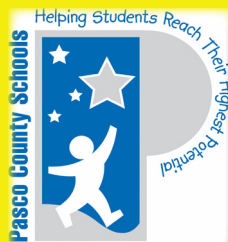
Lunch & Learn

Healthier Body - Leaner & Stronger

- 5 March - Southeast
- 10 March - East
- 11 March - Central
- 17 March - West
- 18 March - Northwest

Our School Board

Frank Parker - Chairman
Allen Altman - Vice Chair
Joanne Hurley
Cathi Martin
Kathryn Starkey



MTEC Printing



Bob Shares Ideas

Our customers are kids and parents; that's easy to understand, though sometimes hard

to remember in the middle of a long, hot bus ride or when there's an angry parent on the phone. Besides that, teachers and principals are also our customers, as are all the people with whom we work side-by-side, and members of the public, too.

Every time we encounter another human, in person, on the phone, by mail, or by email, each encounter is a customer service experience, and it's up to each of us to make it a positive experience.

The customer service training provided by Tara Nixon from Food and Nutrition Services, gave each of us an opportunity to examine our own practices and attitudes. Several people have commented that the inservice helped them refocus on their personal interactions. Perhaps the next time you have an encounter you

will take a moment to remember how important our words, tone of voice, and body language are to the impression we leave with our customers.



Small Group Discussion

Pasco District Schools Transportation
6125 Pinehill Rd
Port Richey, FL 34668
727-774-4000
FAX 727-774-0491
<http://trans.pasco.k12.fl.us/>