

**2011-2012
East Side Secondary Schools**

**SCHOOL BOUNDARY COMMITTEE
Agenda**

October 18, 2010

- Welcome & Introductions
- Timeline
- Purpose
- Guidelines
- Goals
 - Help relieve Dr. John Long Middle and Wiregrass Ranch High Schools.
 - Will not get all schools to capacity
- Today's Tasks
 - Identify and discuss issues
 - Develop a draft boundary or multiple options
 - Determine a second meeting date for the committee
 - Determine a meeting date and location for the parent meeting

GUIDELINES

for the Development of School Attendance Boundaries

School attendance boundaries should:

Socioeconomic Balance

Provide a balance of racial and economic diversity among the populations served.

Feeder Patterns

Maintain an in-line feeder pattern to the greatest extent possible.

Future Growth and Capacity

Appropriately provide for future growth and optimum utilization of schools within the proposed boundaries.

Transportation

Provide for the safe and efficient transportation of students to and from school.

Subdivision Integrity

To the extent possible, incorporate complete neighborhood communities.

Planning Integrity

To the extent possible, should consider long term school construction plans in order to provide long term stability to areas affected by proposed boundary changes.

ATTACHMENT #2

SCHOOL BOUNDARY COMMITTEE

PURPOSE:

The Purpose of the School Boundary Committee is to:

- Develop and recommend to the Superintendent and the School Board proposed new school attendance boundaries that best meet established guidelines
- Provide direction and advice to the Technical Assistance Subcommittee
- Review and critique the work of the Technical Assistance Subcommittee
- Represent the students, parents, communities, schools and district

ROLES and RESPONSIBILITIES:

Roles and Responsibilities of the School Boundary Committee are:

- Make a commitment to attend all meetings and participate in communicating with the community
- Provide feedback to the Technical Assistance Subcommittee
- Assist in identification of critical issues
- Help develop a school based communication plan that both informs all parents of the process and provides a means for the parents to provide input to their SBC representatives
- Participate in presentations to SAC committees, PTA's, and school organizations
- Provide for rumor control

TECHNICAL ASSISTANCE SUBCOMMITTEE

ROLE and FUNCTION:

The role of the Technical Assistance Subcommittee is to develop proposed new school attendance boundaries with advice and direction from the School Boundary Committee members. Such proposed new boundaries are to be supported by information which may include current school boundary maps, student location maps, statistical reports on student population growth trends, school housing capacity data, and analysis of the impact and effect on schools of proposed changes to current school boundary areas.

2011-2012 TIMELINE **SCHOOL BOUNDARY DEVELOPMENT**

MEETINGS

October 18, 2010: First meeting of the School Boundary Committee (SBC) – all schools.

1. Overview of school boundary development process
2. Role of the School Boundary Committee
3. Identification of “HOT” issues
4. Technical Assistance Subcommittee (TAC) report on student housing status: population growth projections, school housing capacities, target outcomes for boundary changes, etc.
5. School boundary change options for discussion by SBC members
6. SBC members to make suggested modifications to be considered in the development of the final version of the *proposed* new boundaries.
7. Set date for second meeting.

Prior to November 19, 2010: Second meeting of the School Boundary Committee.

1. Analysis of impact upon schools of various boundary change options.
2. Formulate the “best” boundary configuration for the proposed new school boundary.
3. Evaluate the degree to which the proposed new boundary satisfies the various boundary evaluation criteria.
4. Sign off on proposed new boundaries.

KEY EVENTS

1. **Prior to December 17, 2010:** District Administrators and Committee members will conduct one evening meeting for each school, or set of schools, open to all parents, to explain the *proposed* changes to the school boundaries and to gather comments.
2. **Prior to December 1, 2010:** Planning Department will deliver copies of the ***proposed*** new school boundary maps to all affected schools. These large maps will be posted in the front lobby area.
3. ***Prior to December 17, 2010:** Planning Department will notify the School Board that the “2011-2012 School Attendance Boundaries” will be presented for consideration and adoption at the January 18, 2011 and the February 1, 2011 School Board meetings.
4. ***Prior to December 17, 2010:** Planning Department will publish legal notice in local newspapers concerning intended School Board action on the 2011-2012 School Attendance Boundaries. Copies of this notice will also be posted at all schools.
5. **Prior to December 1, 2010:** Communications Department will deliver copies of the “Superintendent’s Letter to Parents” to all affected schools for immediate distribution to all students and parents.
6. ***January 18, 2011:** Date scheduled for “First Reading” of the *proposed* new boundaries by the School Board.
7. ***February 1, 2011:** Date scheduled for “Adoption” of the *proposed* new school boundaries by the School Board.

* Events required by law.

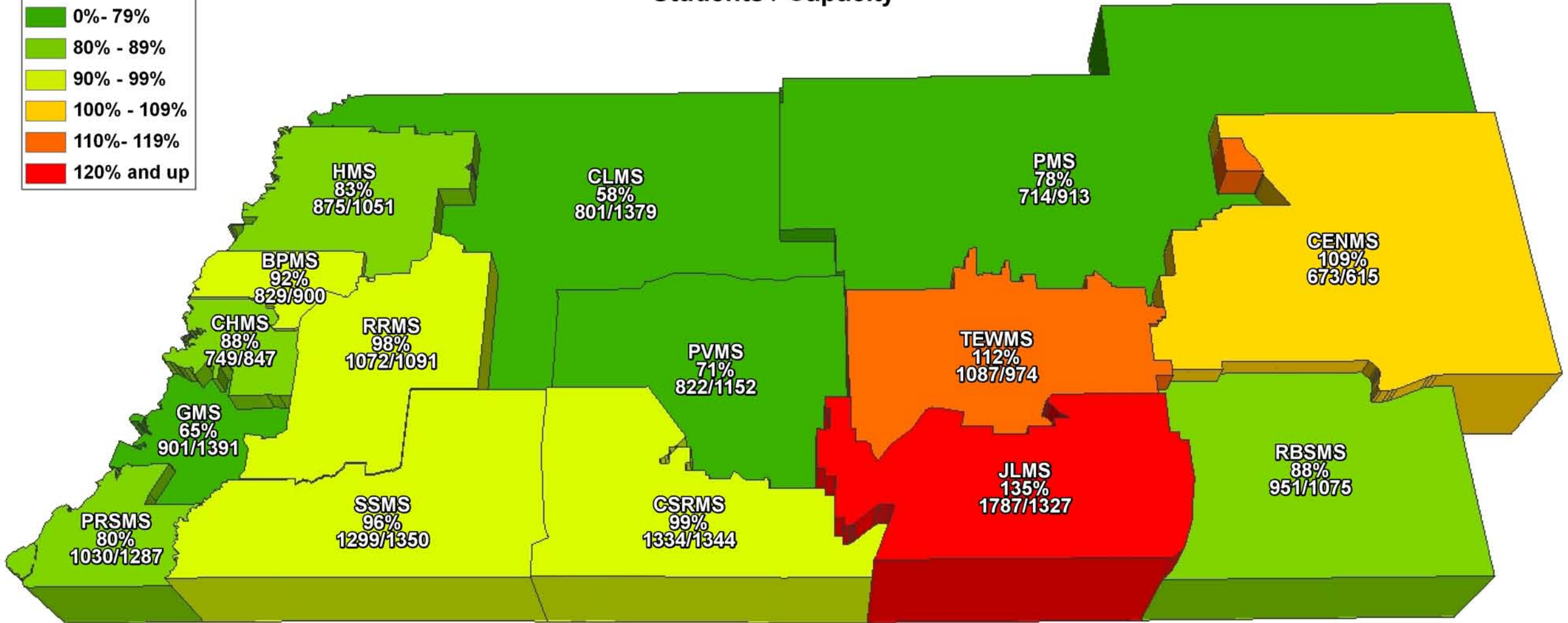


Middle School Enrollment 2010/2011

Percent Capacity Students / Capacity

Percent Capacity

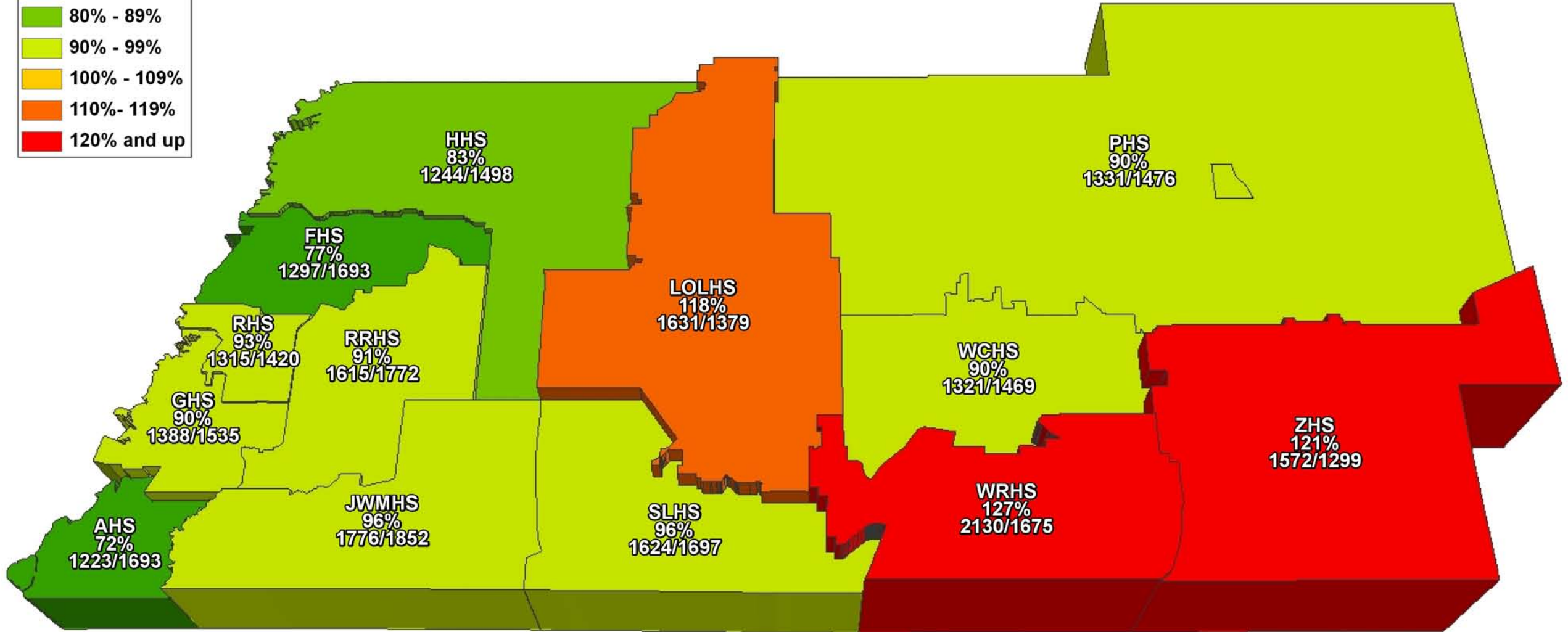
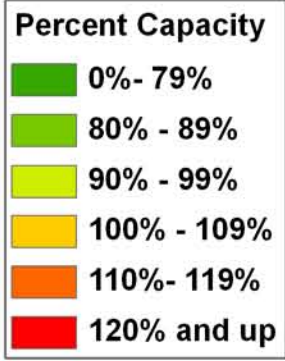
- 0% - 79%
- 80% - 89%
- 90% - 99%
- 100% - 109%
- 110% - 119%
- 120% and up





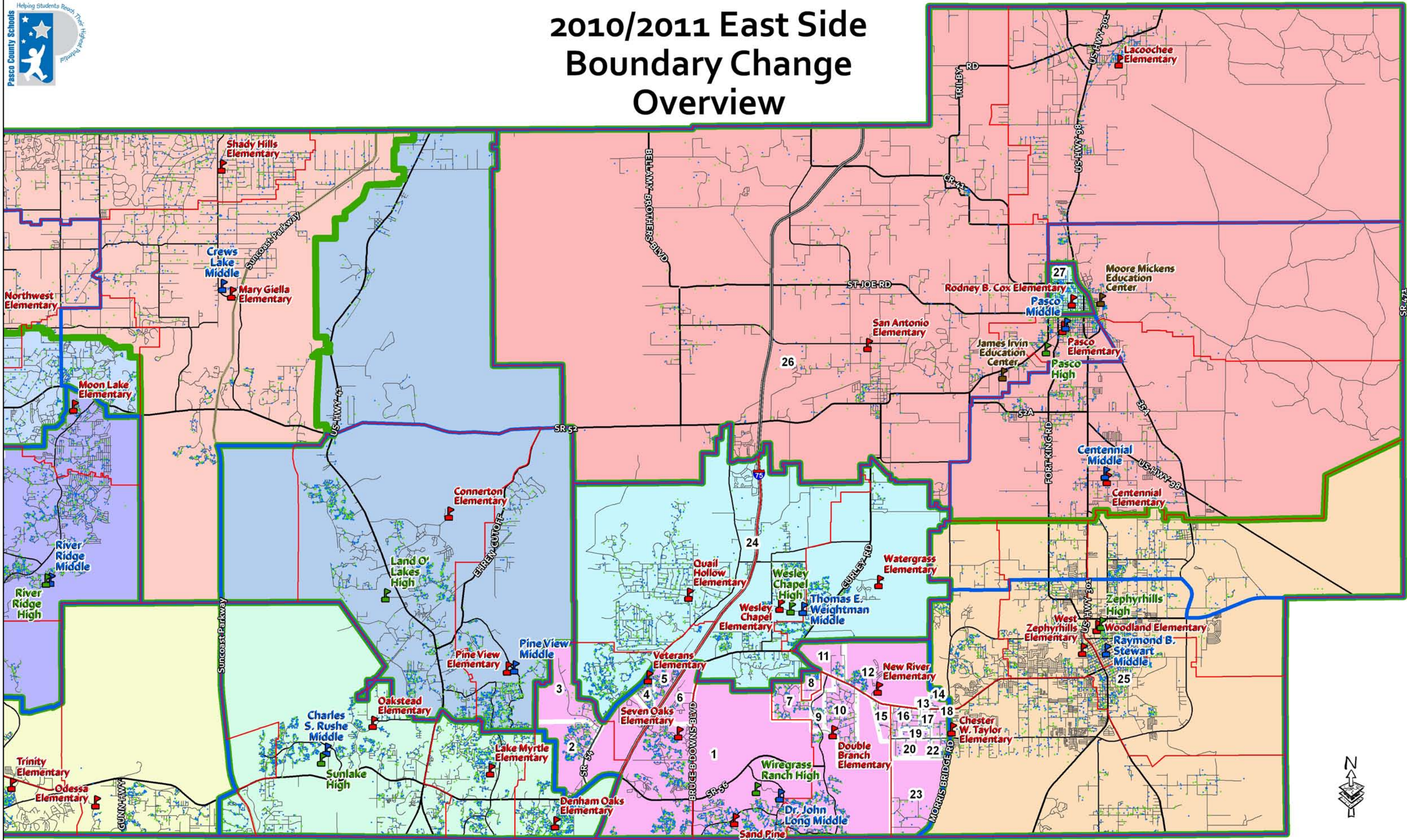
High School Enrollment 2010/2011

Percent Capacity Students / Capacity





2010/2011 East Side Boundary Change Overview



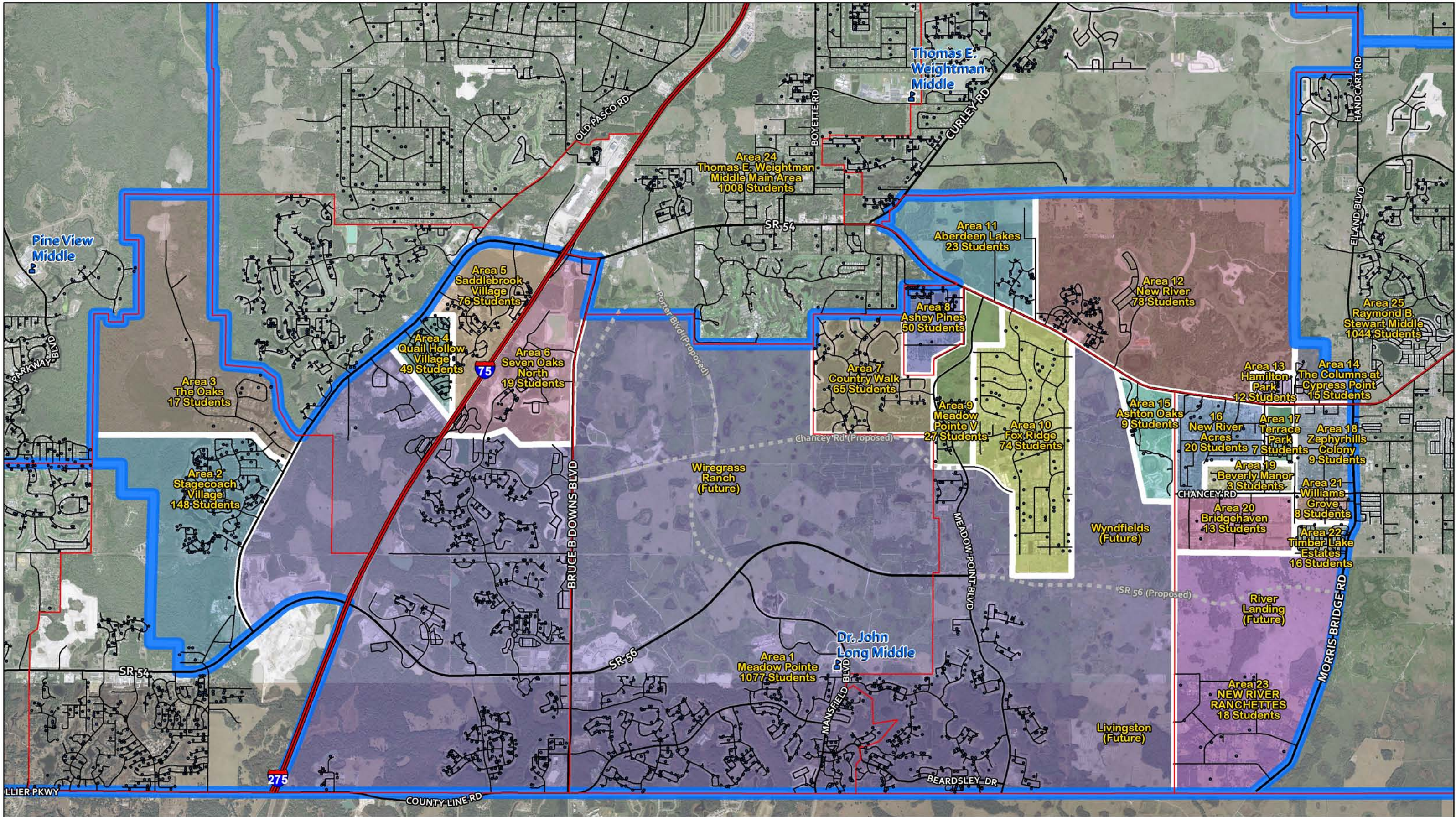
Department of Planning
District School Board of Pasco County
September 30, 2010

• Students Middle • Students High ◻ Elementary Boundary ◻ Middle Boundary ◻ High Boundary



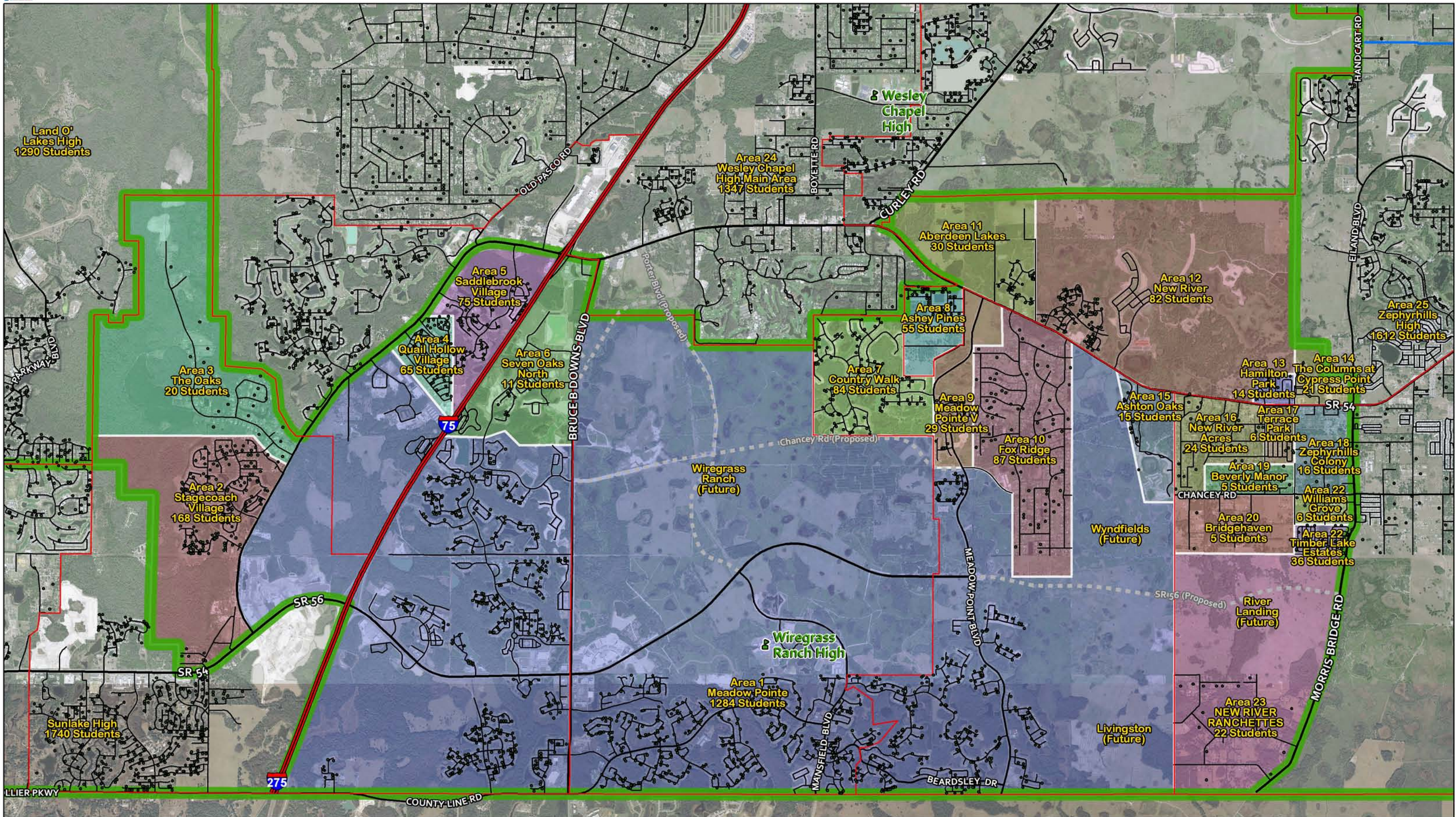


Dr. John Long Middle School Boundary Change Areas





Wiregrass Ranch High School Boundary Change Areas

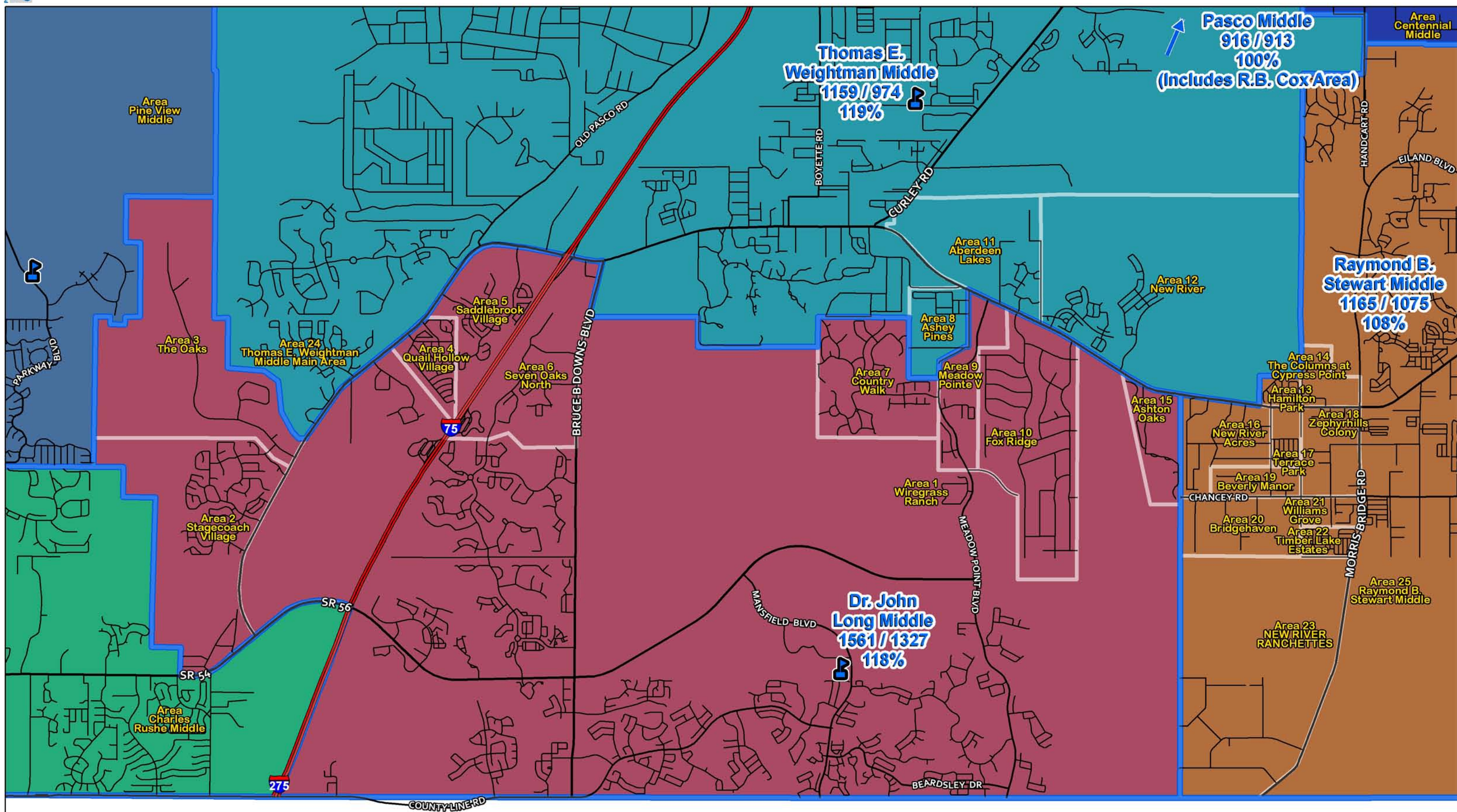


High Schools
 High School Students
 Elementary Boundary
 High Boundary
 HS Boundary Change Areas

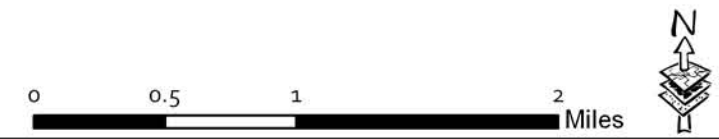
0 0.5 1 2 Miles



Middle School Boundary Option - Planning Suggestion

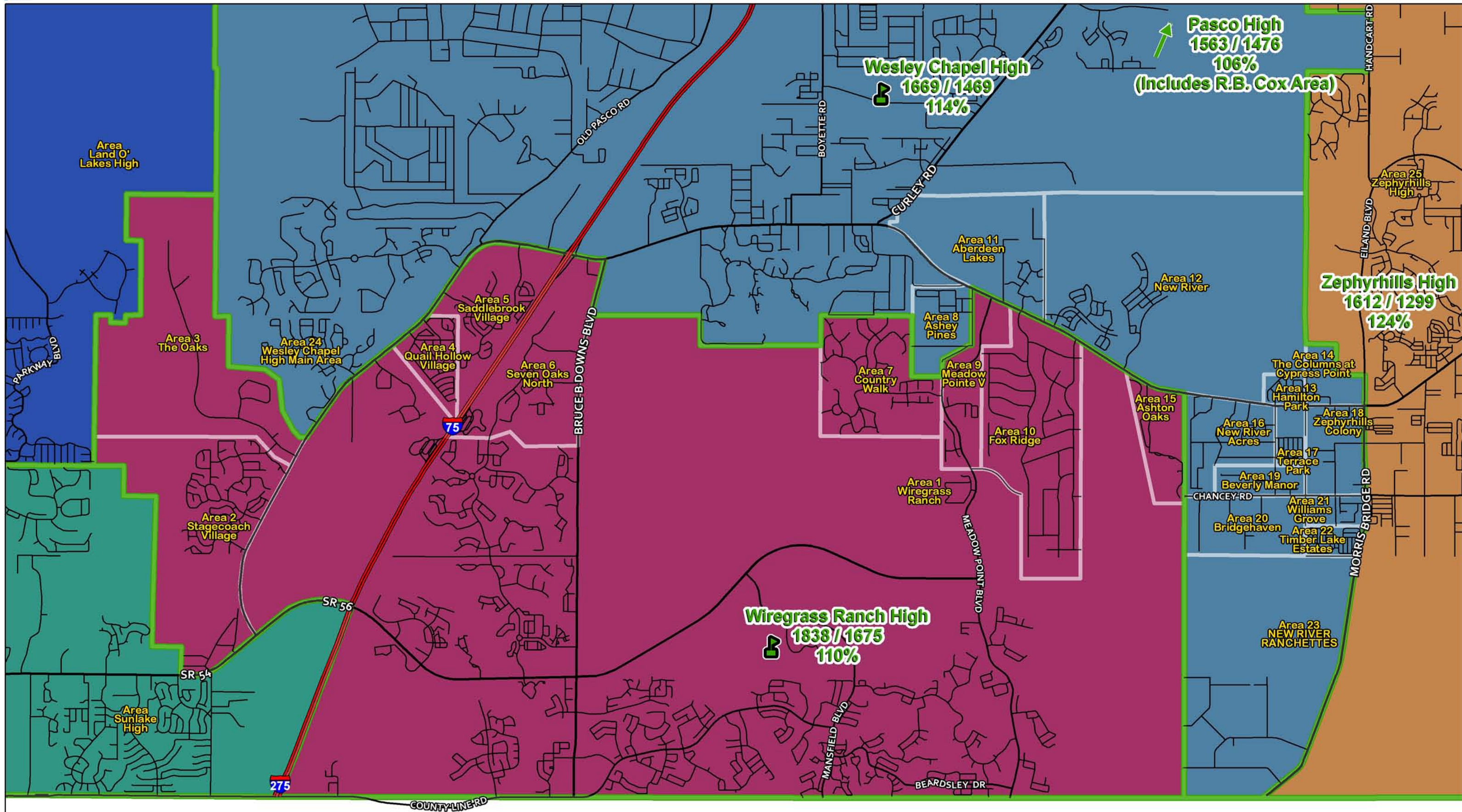


Middle Schools
 Middle Boundary
 MS Boundary Change Areas





High School Boundary Option - Planning Suggestion



Pasco High
1563 / 1476
106%
(Includes R.B. Cox Area)

Wesley Chapel High
1669 / 1469
114%

Zephyrhills High
1612 / 1299
124%

Wiregrass Ranch High
1838 / 1675
110%

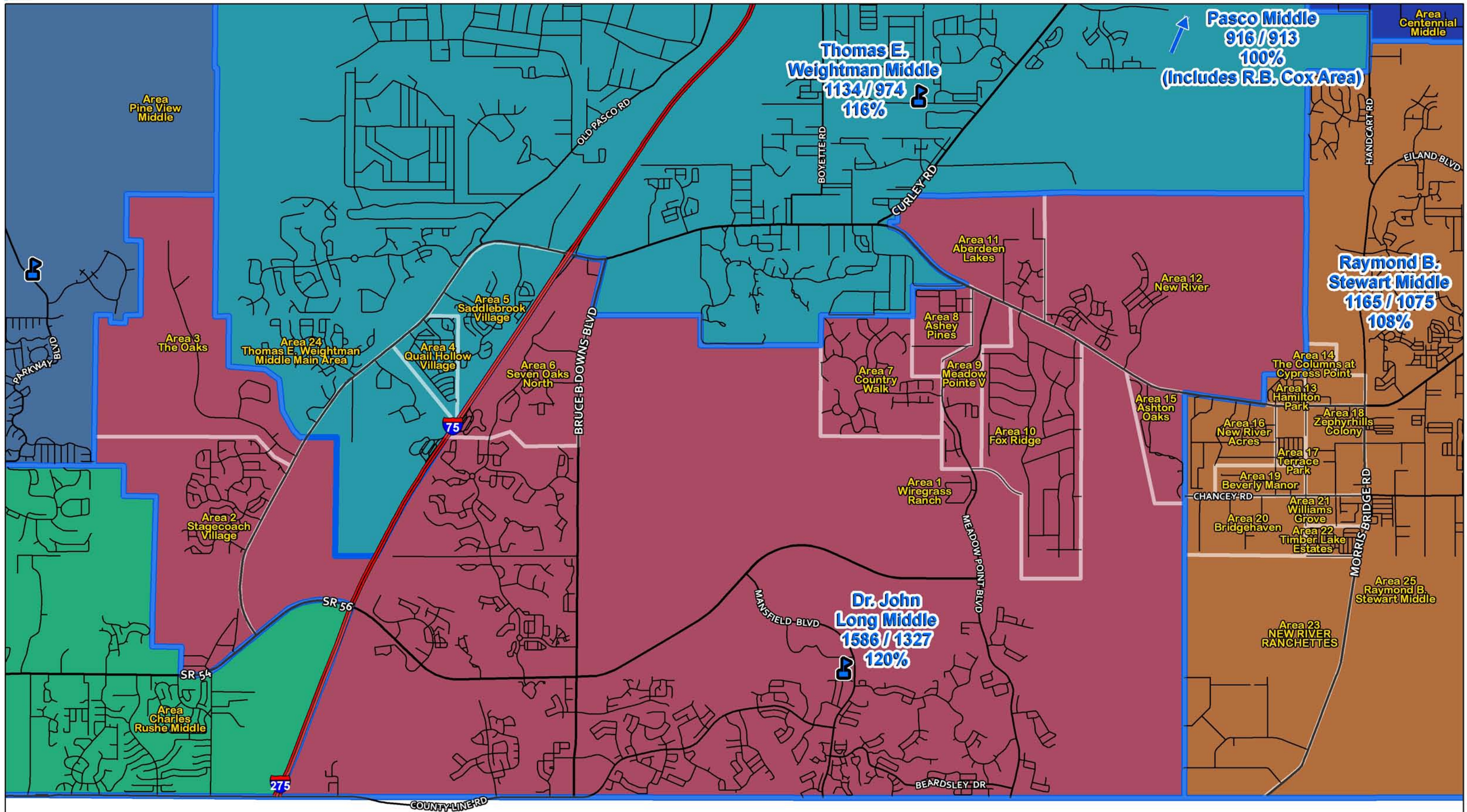
High Schools
 High Boundary
 HS Boundary Change Areas

0 0.5 1 2 Miles





Middle School Boundary Option - Planning Suggestion 2

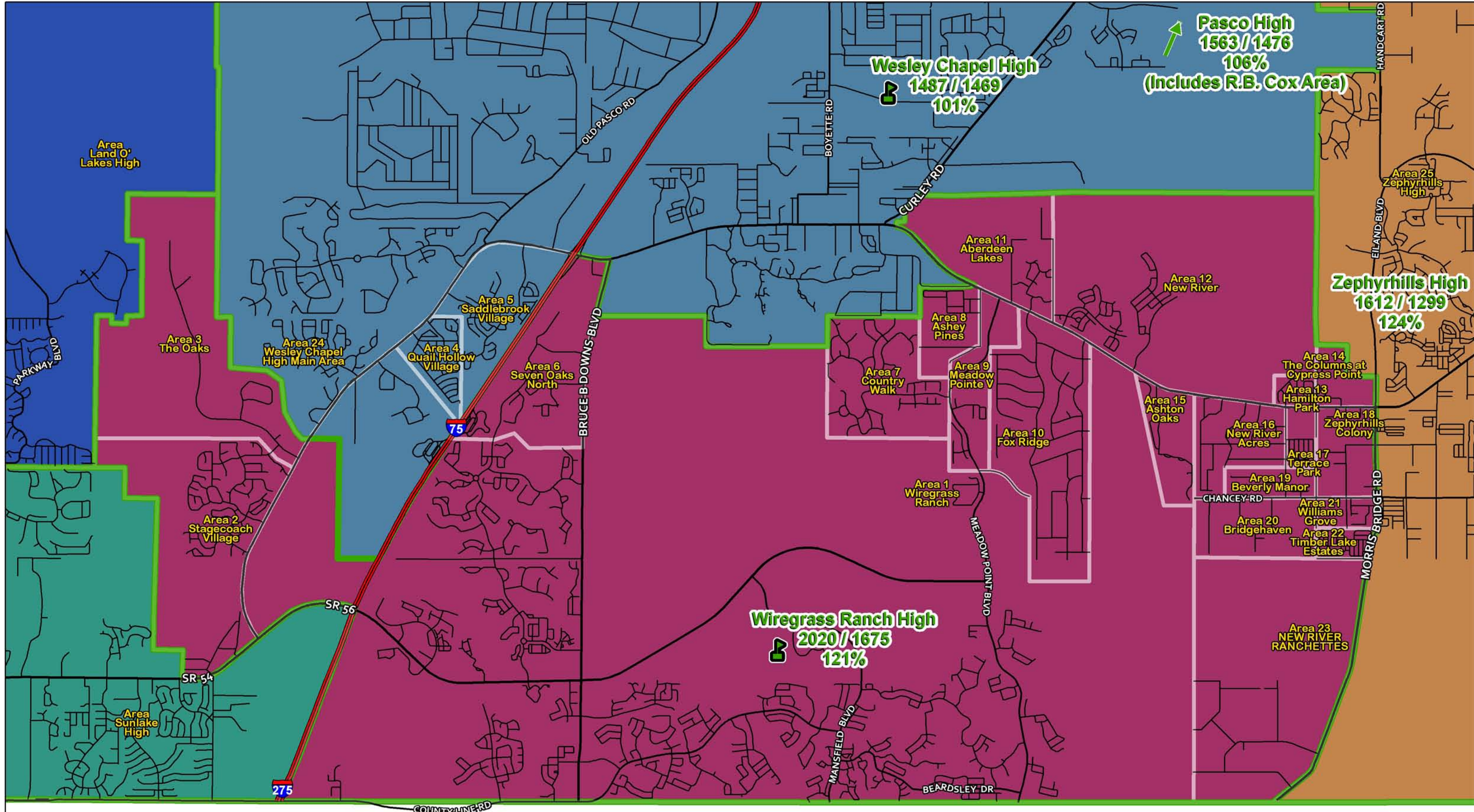


Middle Schools
 Middle Boundary
 MS Boundary Change Areas

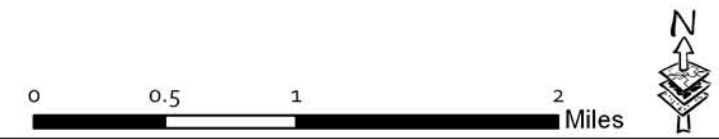




High School Boundary Option - Planning Suggestion 2

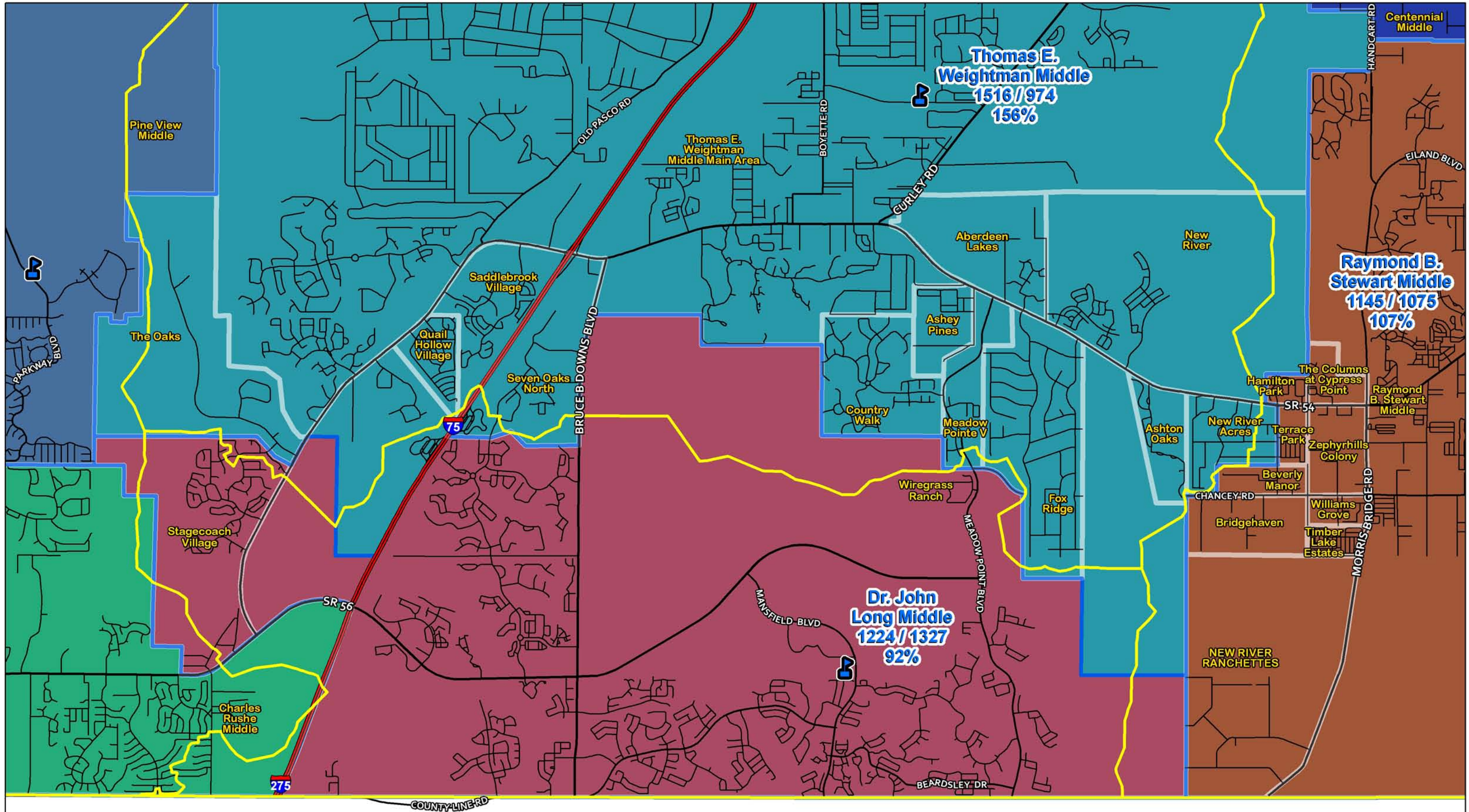


High Schools
 High Boundary
 HS Boundary Change Areas





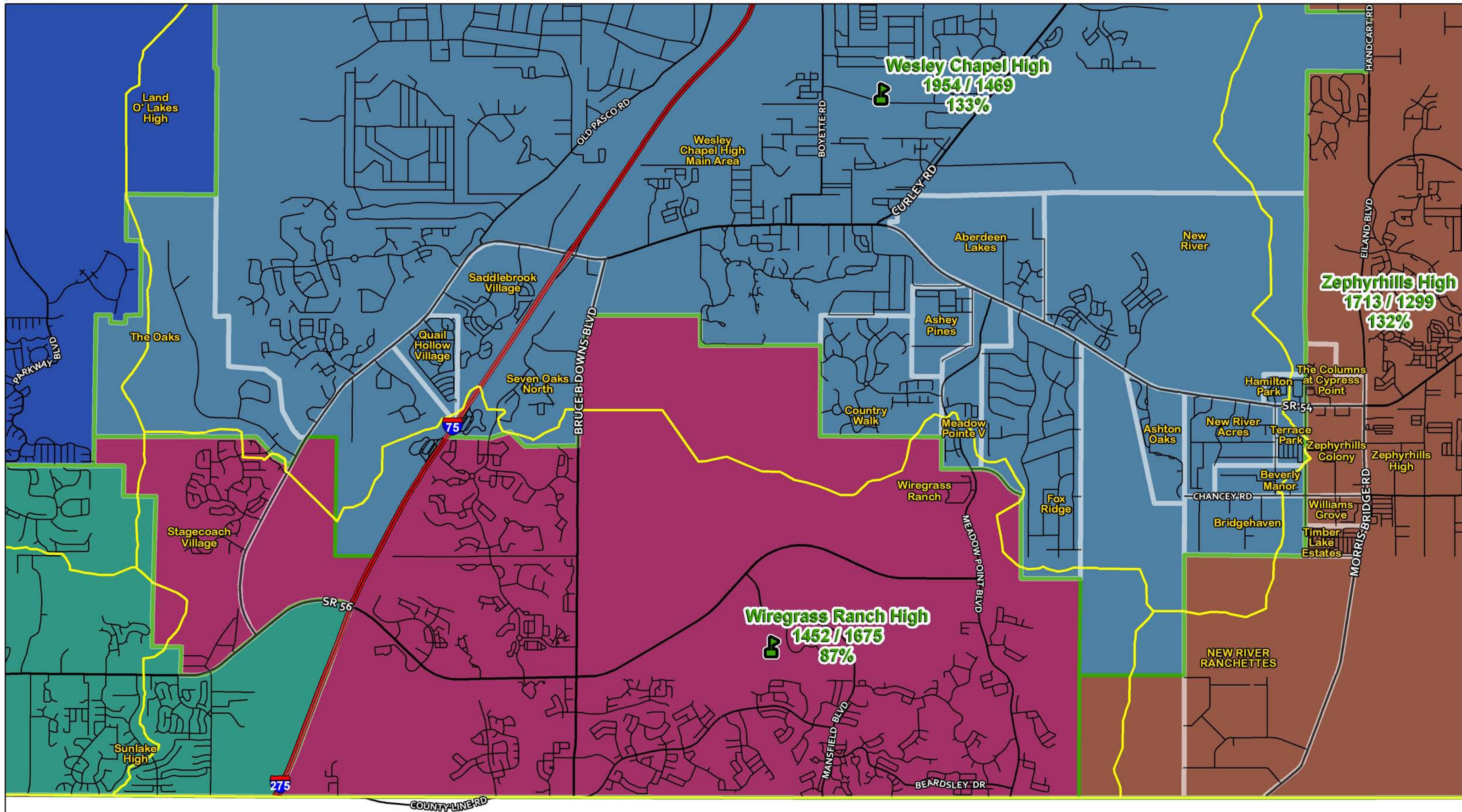
Middle School Boundary Option - Based on Nearest School



📍 Middle Schools
 Middle Boundary
 MS Boundary Change Areas
 MS Distance Midpoint Line



High School Boundary Option - Based on Nearest School



Wesley Chapel High
1954 / 1469
133%

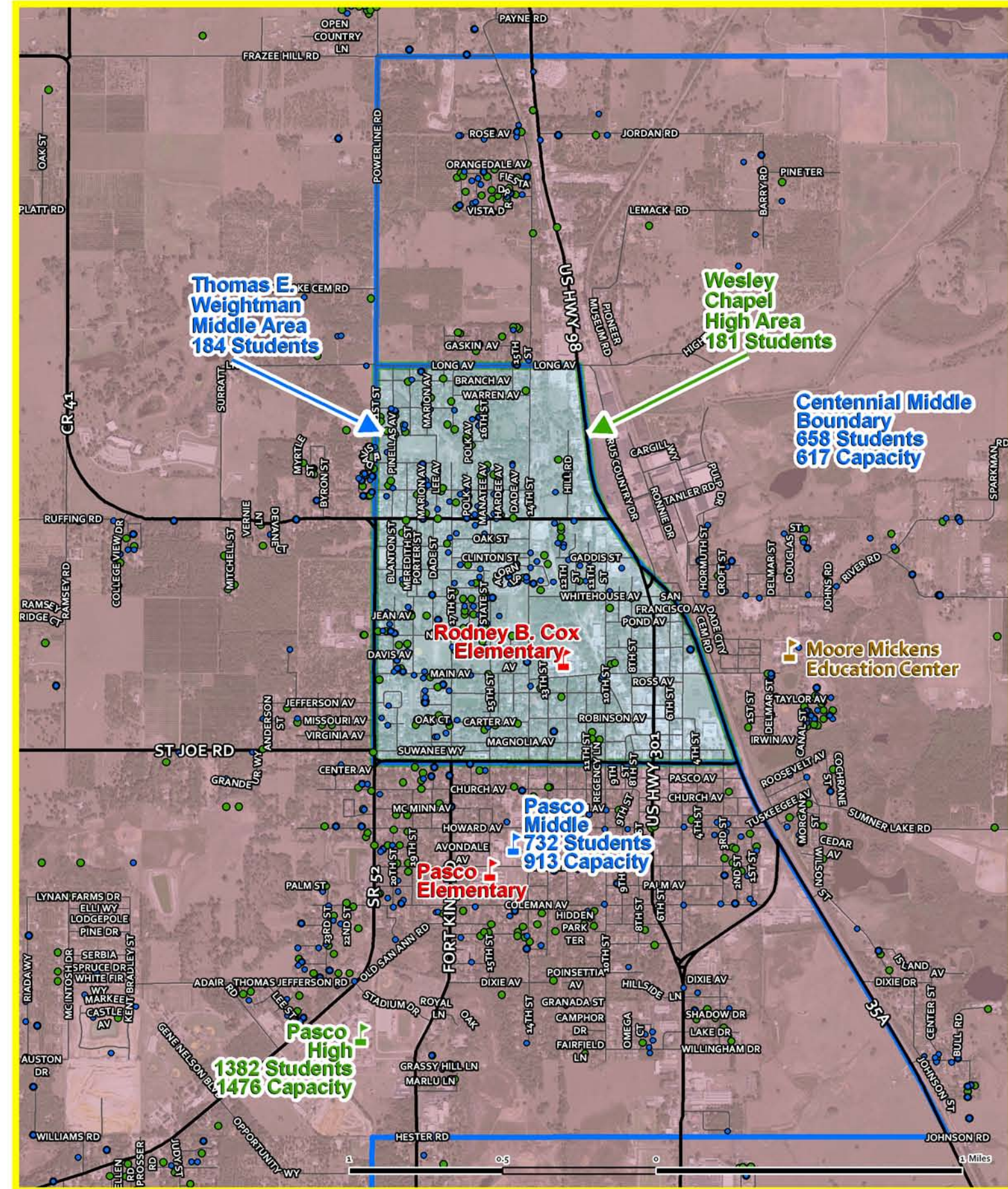
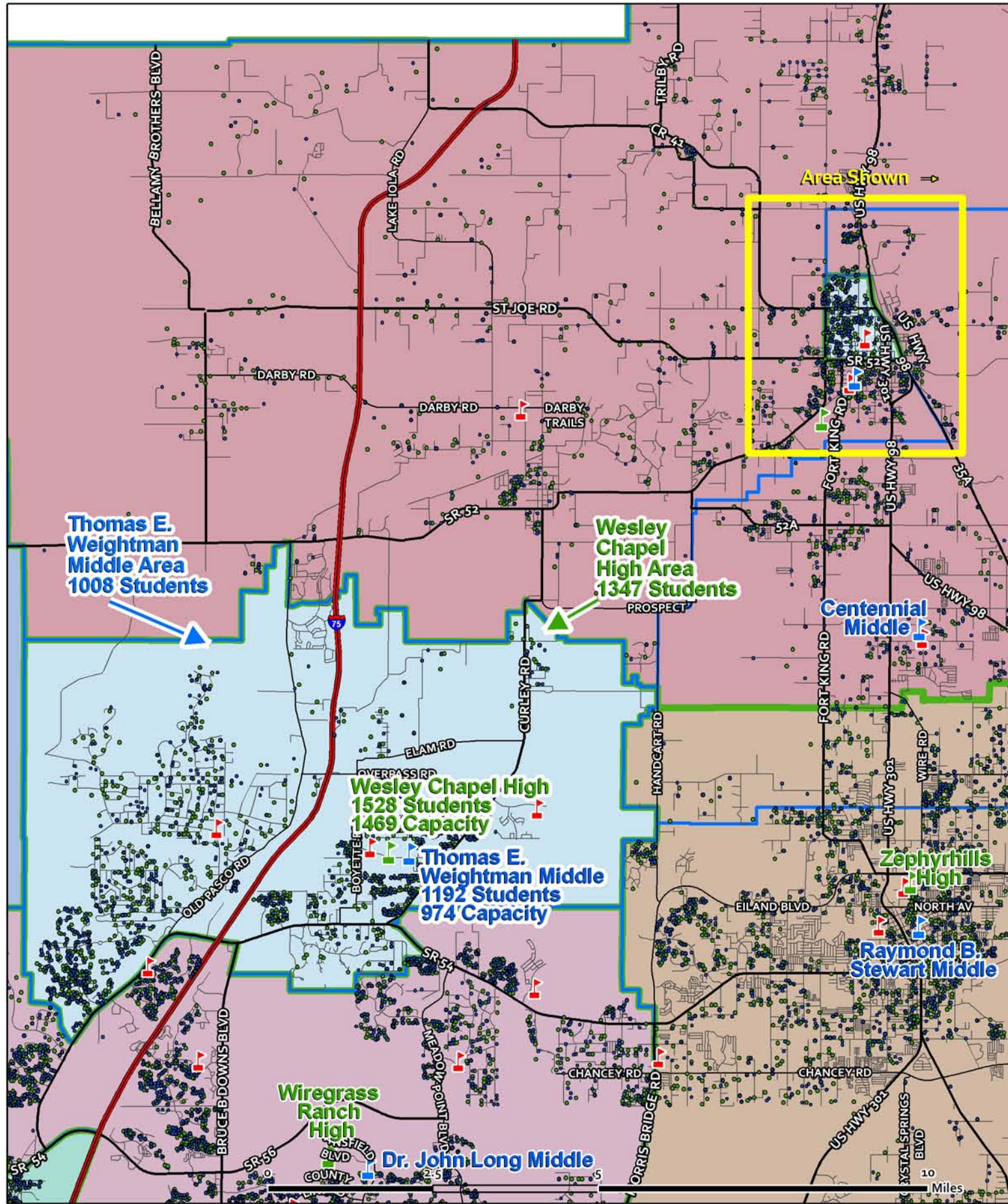
Wiregrass Ranch High
1452 / 1675
87%

Zephyrhills High
1713 / 1299
132%

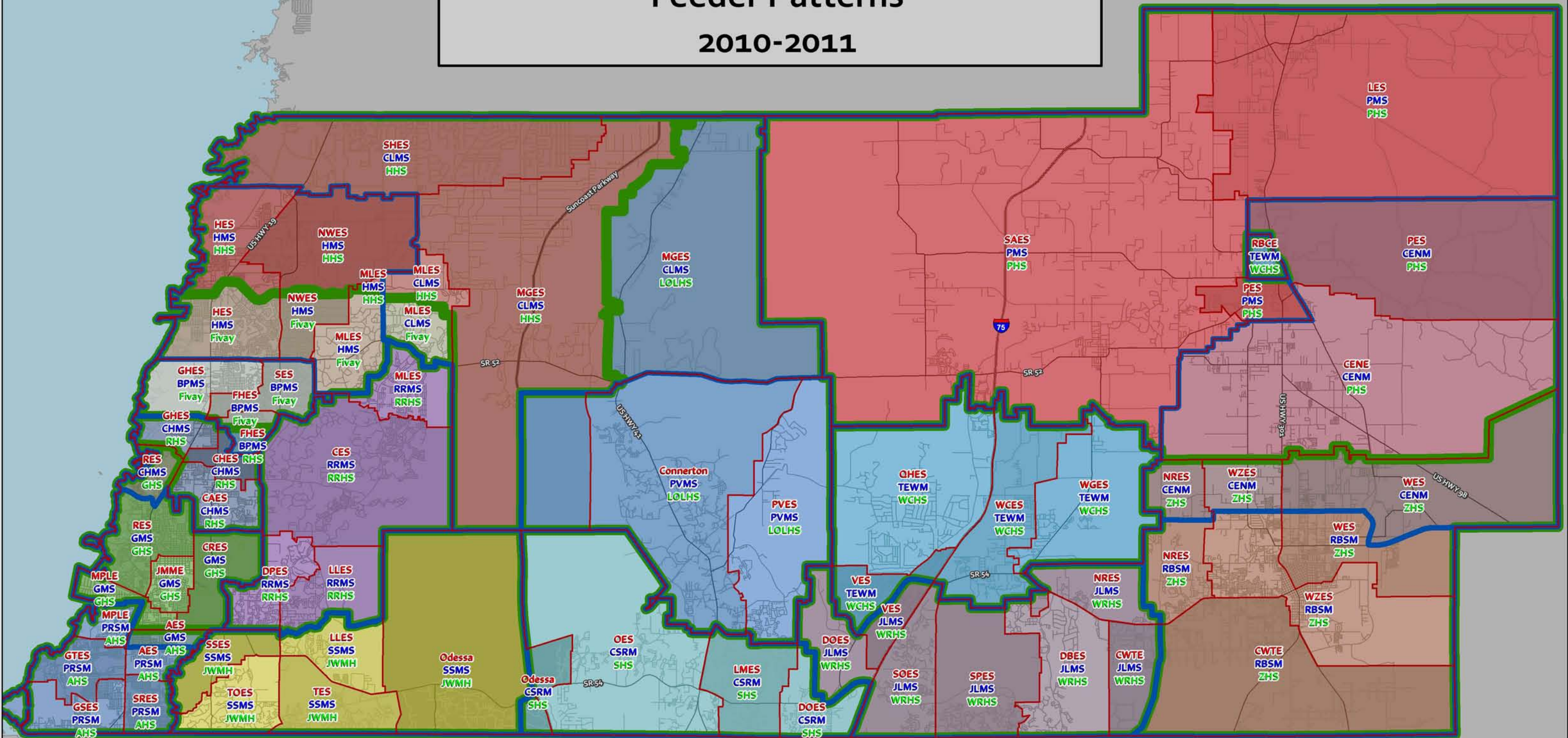
High Schools
 High Boundary
 HS Boundary Change Areas
 HS Distance Midpoint Line



Rodney B. Cox Area - TEWMS & WCHS



Pasco County School Boundaries Feeder Patterns 2010-2011



AES - Anclote Elementary	CEES - Cypress Elementary	GTES - Gulf Trace Elementary	LLES - Longleaf Elementary	OES - Oakstead Elementary	SAES - San Antonio Elementary	SSES - Seven Springs Elementary	VES - Veterans Elementary	BPMS - Bayonet Point Middle School	JLMS - Dr. John Long Middle School	PVMS - Pine View Middle School	AHS - Anclote High School	RHS - Ridgewood High School
CAES - Calusa Elementary	DPES - Deer Park Elementary	GSES - Gulfside Elementary	MGES - Mary Giella Elementary	PES - Pasco Elementary	SPES - Sand Pine Elementary	SHES - Shady Hills Elementary	WGES - Watergrass Elementary	CENM - Centennial Middle School	GMS - Gulf Middle School	RRMS - River Ridge Middle School	GHS - Gulf High School	RRHS - River Ridge High School
CENE - Centennial Elementary	DOES - Denham Oaks Elementary	HES - Hudson Elementary	MPLE - Mittie P. Locke Elementary	PVES - Pine View Elementary	SMES - Sanders Memorial Elementary	SRES - Sunray Elementary	WCES - Wesley Chapel Elementary	CSRM - Charles Rushe Middle School	HMS - Hudson Middle School	RRMS - River Ridge Middle School	HHS - Hudson High School	SHS - Sunlake High School
CHES - Chasco Elementary	DBES - Double Branch Elementary	JMME - J.M. Marlowe Elementary	MLES - Moon Lake Elementary	QES - Quail Hollow Elementary	SES - Schrader Elementary	TES - Trinity Elementary	WZES - West Zephyrhills Elementary	CHMS - Chasco Middle School	PMS - Pasco Middle School	SSMS - Seven Springs Middle School	JWMH - J. W. Mitchell High School	WCHS - Wesley Chapel High School
CWTE - C.W. Taylor Elementary	FHES - Fox Hollow Elementary	LES - Lacochee Elementary	NRES - New River Elementary	RES - Richey Elementary	SOES - Seven Oaks Elementary	TOES - Trinity Oaks Elementary	WES - Woodland Elementary	CLMS - Crews Lake Middle School	PRSM - Paul R. Smith Middle School	TEWM - Thomas E. Weightman Middle School	LOLHS - Land O' Lakes High School	WRHS - Wiregrass Ranch High School
CRES - Cotee River Elementary	GHES - Gulf Highlands Elementary	LMES - Lake Myrtle Elementary	NWES - Northwest Elementary	RBCE - Rodney B. Cox Elementary							PHS - Pasco High School	ZHS - Zephyrhills High School



Department of Planning
District School Board of Pasco County
January 13, 2010

Elementary Boundary
 Middle Boundary
 High Boundary

