

Pasco County Schools


Welcome to the New Charter Applicant Orientation

December 7, 2017

**Jeff Yungmann, Program Coordinator for
Charter Schools**




PURPOSE OF MEETING

- * **Inform you of the purpose of charter schools and state requirements for the application**
 - * **Introduce you to the district's application process, timeline, and expectation for completion**
 - * **Discuss any potential challenges**
 - * **Answer any questions**
- 

FLORIDA CHARTER LEGISLATION

Legislation establishes the following:

- * Purpose of charter schools
 - * Requirements for the application
 - * Eligibility criteria for students
 - * Roles/responsibilities of the charter school operator and sponsor
 - * Guidelines for the Charter
 - * Funding sources
 - * Training for charter school governing board approved by DOE
- 

WHAT ARE CHARTER SCHOOLS?

Pasco County Schools Website

http://www.pasco.k12.fl.us/charter_schools/

New Charter Application Process

http://www.pasco.k12.fl.us/charter_schools/application

Florida Department of Education

<http://www.fldoe.org/schools/school-choice/charter-schools/>

Charter Schools Frequently Asked Questions

<http://www.fldoe.org/schools/school-choice/charter-schools/charter-school-faqs.shtml>

HOW ARE CHARTER SCHOOLS CREATED, ORGANIZED, AND OPERATED?

- Charter schools are created when an individual, a group of parents or teachers, a business, a municipality, or a legal entity submits an application to the school district; the school district approves the application; the applicants form a governing board that negotiates a contract with the district school board; and the applicants and district school board agree upon a charter or contract. The district school board then becomes the sponsor of the charter school. The negotiated contract outlines expectations of both parties regarding the school's academic and financial performance.
- A charter school must be organized as, or be operated by, a nonprofit organization. The charter school may serve at-risk students, or offer a specialized curriculum or core academic program, provide early intervention programs, or serve exceptional education students.

WHO IS ELIGIBLE TO ATTEND CHARTER SCHOOLS?

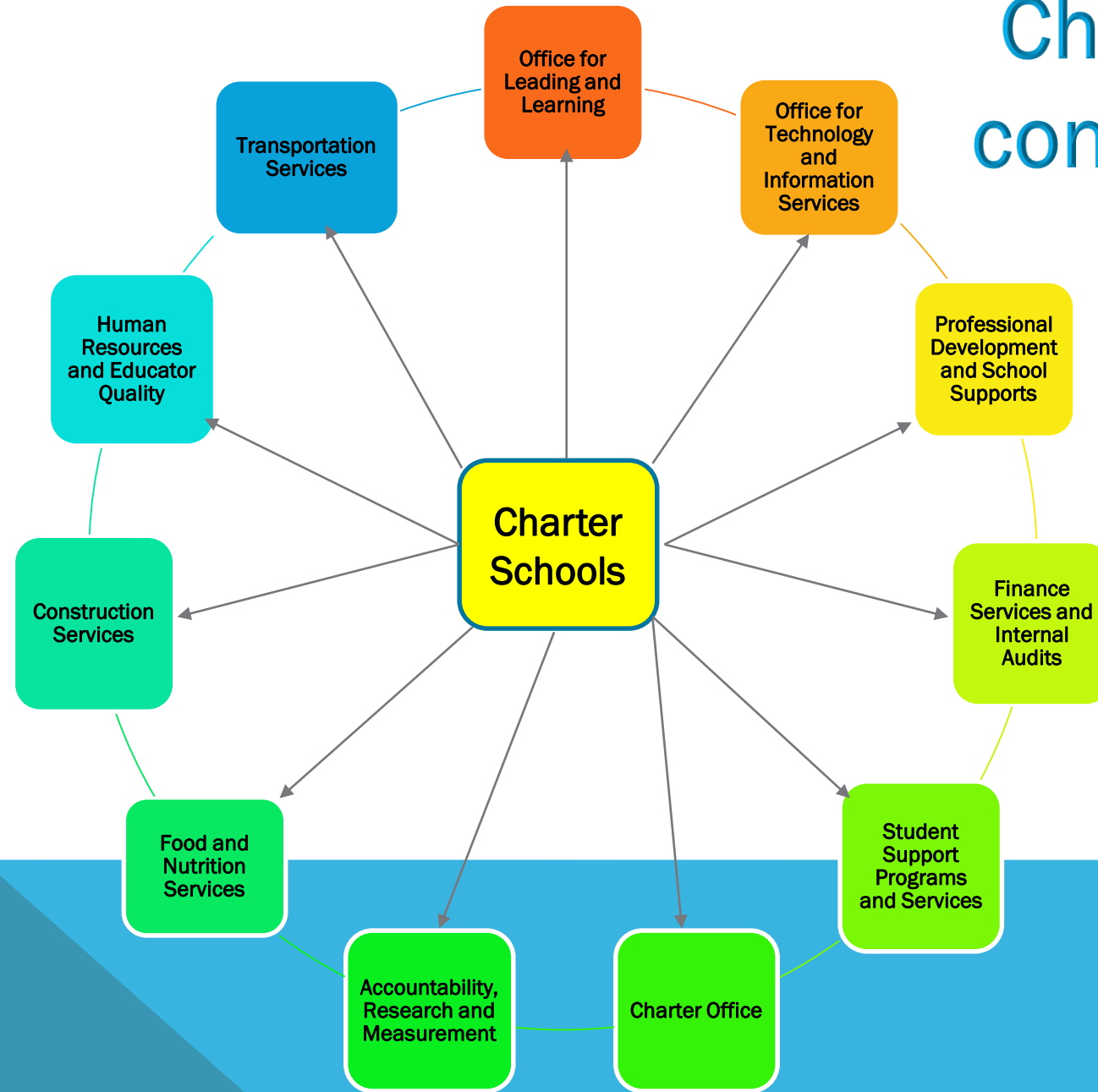
Charter schools are open to all students residing within the district; however, charter schools are allowed to target students within specific age groups or grade levels, students considered at-risk of dropping out or failing, students wishing to enroll in a charter school-in-the-workplace or charter school-in-a-municipality, students residing within a reasonable distance of the school, students who meet reasonable academic, artistic or other eligibility standards established by the charter school, or students articulating from one charter school to another. Additionally, a charter school may give enrollment preference to the following student populations:

- Siblings of current charter school students
- Children of a charter school governing board member or employee
- Children of employees of the business partner of a charter school-in-the-workplace or resident of the municipality in which such a charter is located
- Children of residents of a municipality that operates a charter school-in-a-municipality
- Students who have successfully completed a voluntary prekindergarten program provided by the charter school during the previous year
- Children of an active-duty member of any branch of the US Armed Forces.

Beginning by the 2017-2018 school year, as part of a school district's or charter school's controlled open enrollment process, and in addition to the existing public school choice programs provided in s. 1002.20(6)(a), each district school board or charter school shall allow a parent from any school district in the state whose child is not subject to a current expulsion or suspension to enroll his or her child in and transport his or her child to any public school, including charter schools, that has not reached capacity in the district, subject to the maximum class size pursuant to s.1003.03... [F.S. 1002.31 (2)(a)]

- (b) Each school district and charter school capacity determinations for its schools must be current and must be identified on the school district and charter school's websites... [F.S. 1002.31 (2)(a)]

Charter Schools connection to the Sponsor



PASCO COUNTY CHARTER SCHOOLS

- * Fourteen approved charter schools
- * Eleven currently operating during the 2017-18 school year
<http://www.pasco.k12.fl.us/schools#charter>
- * Serving approximately 4500 students grades K-12

WHAT ARE SOME KEY COMPONENTS OF A CHARTER SCHOOL?



Governance



Operations



Curriculum



**Academic
Accountability**



**Safety and Risk
Management**



**Legislative
requirements**



Facilities



**Policies and
Procedures**



GOVERNANCE

- Governing body of the charter school
- Makes decisions on areas related to policies and procedures, budget, student discipline appeals, “Expressed Concerns”, employment related decisions, and all areas that ensure the health, welfare, and safety of the students, faculty, and staff
- Governance training requirements (F.A.C. 6A-6.0784) for all governing board members
- The sponsor may not require governing board members to reside in the school district in which the charter school is located if the charter school complies with this subparagraph. [F.S. 1002.33(9)(p)2.]
- Each charter school’s governing board must appoint a representative to facilitate parental involvement, provide access to information, assist parents and others with questions and concerns, and resolve disputes. The representative must reside in the school district in which the charter school is located and may be a governing board member, a charter school employee, or an individual contracted to represent the governing board. [F.S. 1002.33(9)(p)2.]

GOVERNANCE (CONTINUED)

- Members of the governing board of the charter school shall also undergo background screening in a manner similar to that provided in s. 1012.32. [F.S. 1002.33(9)(g)(1.)]
- The governing board of a charter school shall adopt policies establishing standards of ethical conduct for instructional personnel and school administrators. [F.S. 1002.33(9)(g)(3.)]

Pasco County Schools Equity Policies (Administrative, Instructional , Non-Instructional, Student)

<http://www.pasco.k12.fl.us/er/equity/>

- Charter school personnel may not appoint, employ, promote, or advance, or advocate for appointment, employment, promotion, or advancement, in or to a position in the charter school in which the personnel are serving or over which the personnel exercises jurisdiction or control any individual who is a relative. [F.S. 1002.33(24)(b)]
- An employee of the charter school, or his or her spouse, or an employee of a charter management organization, or his or her spouse, may not be a member of the governing board of the charter school. [F.S. 1002.33(26)(c)]

OPERATIONS

- **Facility:** Physical building, maintenance, capacity, and functional operation including safety and security
- **Educational operations:** Academic, teaching and learning, communication, schedules, reporting, tracking student progress, School improvement goals, parental involvement
- **Financial operations:** Financial reporting to sponsor, financial accountability, transactions, budgeting, independent financial audit, grant deliverables, Red Book policies and procedures, federal and state tax and withholdings, financial stability

Revenue Estimate Worksheet (FDOE)

<http://www.fldoe.org/finance/fl-edu-finance-program-fefp/charter-school-revenue-estimate-worksh.stml>

Guide to Services and Fees for Pasco County Charter Schools

http://www.pasco.k12.fl.us/charter_schools/forms

- **Accountability:** Legislative and contractual obligations, timely reporting to sponsor, serving students according to their educational needs, FERPA, IDEA, FLSA, ADA, EEOC, NCLB, School Nutrition, Safety, Discipline, 504, transportation, civil rights, anti-bullying legislation, non-discrimination, student records

CURRICULUM

- Standards based
- Meets state and legislative requirements (Student progression, promotion, retention, graduation, assessment, remediation, enrichment, differentiation, etc.)
- Research-based
- Adaptive, innovative, technology based, collaborative, etc.
- Pasco County Schools Student Progression Plan

<http://www.pasco.k12.fl.us/library/communications/spp.pdf>

ACADEMIC ACCOUNTABILITY


- Do you have a strategic plan or plans to develop one?
- How will you track student data?
- How will you use it?
- Are your student achievement goals “SMART” and measurable
- Will your class schedules and staffing maximize funding?
- Are you ready to develop student schedules?
- How important will your data entry operator be to your operation?
- Florida School Accountability Reports

<http://www.fl DOE.org/accountability/accountability-reporting/school-grades/>


SAFETY AND RISK MANAGEMENT

- Employee background checks, fingerprinting
- Insurance policies to protect the organization, assets, and individuals, and include in your budget
- Student or staff injuries, missing child, emergency management, volunteers, visitors on campus, Active Threat Plan, emergency drills, medication training, ESE training, etc.

LEGISLATIVE REQUIREMENTS

- What are the laws and regulations associated with IDEA, ADA, EEOC, FLSA, FERPA, NCLB, School Nutrition, Health/Safety, Discipline, Anti-Bullying, Civil Rights, Non-Discrimination, Section 504, IRS regulations, transportation of students?
 - Due process procedures for student and employee behavior and grievances (Exceptional Student Education, 504)
 - Emergency drills, Fire Safety Inspections, Health Inspections, Certificate of Occupancy
 - Student and employee forms and records, medication training, teacher certification, reporting to Professional Practices Commission
- 

FACILITIES

- Charter Schools must comply with FL Building Code (Chapter 553), except for the State Requirements for Educational Facilities
 - Financing of facilities
 - Operation and maintenance of the facility
 - Ensure the safety of students and staff
 - Functional use of the facility to serve educational needs
- 

POLICIES AND PROCEDURES

- Establish the Policies and Procedures Manual based on FL law and best practice. Have an attorney review. Critical policies and procedures (financial, HR, board) should be ready BEFORE you hire staff and open the school
- Create adequate policies and procedures (discrimination, grievance, etc.) to protect the school and individuals, and train your staff.
- Develop the Employee Handbook, including the required legal language to protect the organization
- Pasco County Schools Student Code of Conduct

<http://www.pasco.k12.fl.us/ssps/conduct>

NEW CHARTER SCHOOL APPLICATIONS

Types of Charter School Applications:

- * **Standard Application: “Brick and Mortar”**
- * **Virtual Charter School Application**
- * **High Performing Replication Application**

NEW CHARTER APPLICATION PROCESS

- New Charter Application Process (2018 cycle)

http://www.pasco.k12.fl.us/charter_schools/application

- Guide to Services and Fees for Pasco County Schools

http://www.pasco.k12.fl.us/charter_schools/forms

- Florida Department of Education (Office of Independent Education and Parental Choice)

<http://www.fldoe.org/schools/school-choice/charter-schools/>

ADDITIONAL RESOURCES

CAPITAL OUTLAY FULL TIME EQUIVALENCY (COFTE)

<http://www.fldoe.org/finance/fl-edu-finance-program-fefp/capital-outlay-fte-cofte.stml>

DISTRICT CONTROLLED OPEN ENROLLMENT PLAN (Board approved 1/17/17)

http://www.pasco.k12.fl.us/library/ed_choice/Controlled_Open_Enrollment_plan.pdf

QUESTIONS ?



CONTACT INFORMATION

Jeff Yungmann

Program Coordinator for Charter Schools

(813) 794-2408

jyungman@pasco.k12.fl.us